

NOBLELIFT
CANADA  INC.

WE PROMISE | WE DELIVER

 ISO9001 / ISO14001
CE Certificate

OPH 12 OPH 12K

ELECTRIC ORDER PICKER

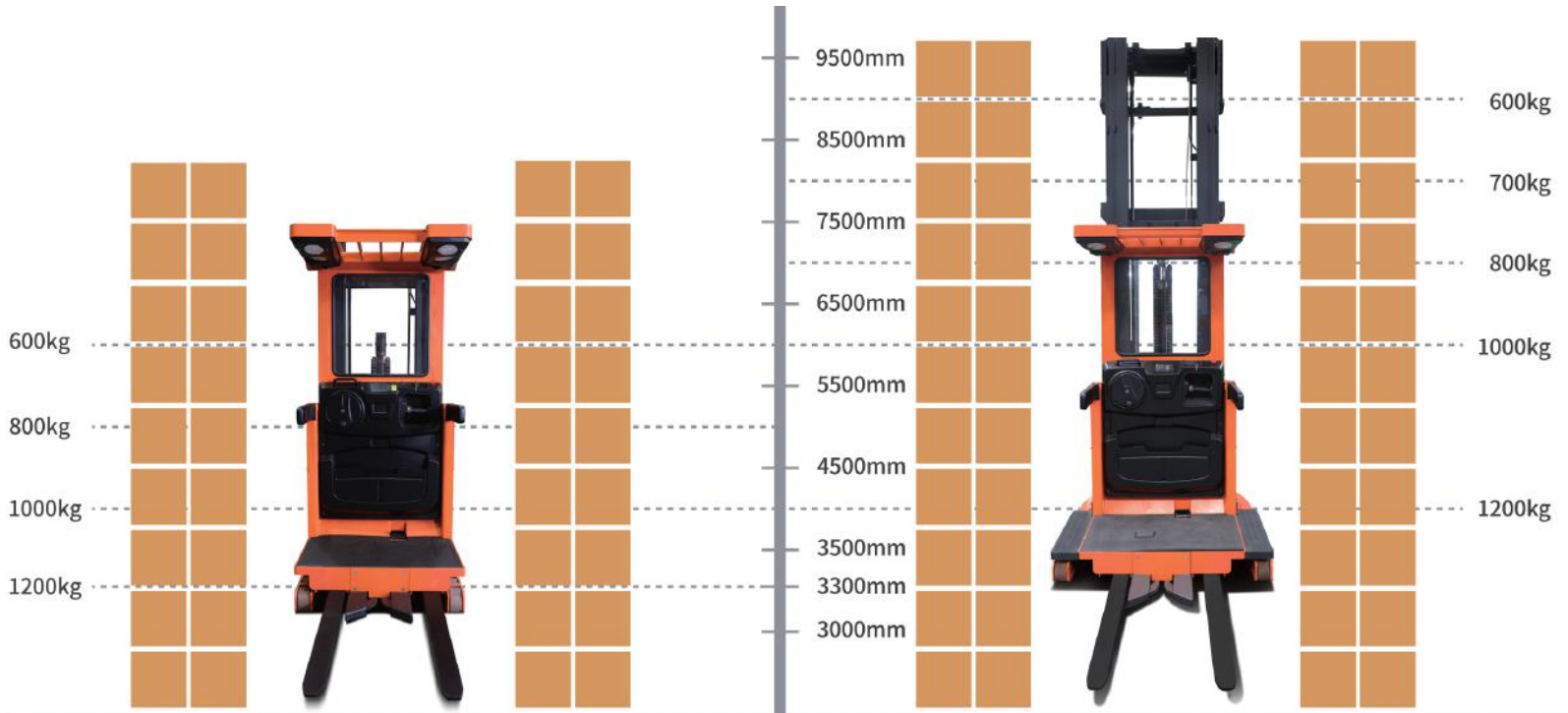
NEW ARRIVAL



514-697-0117

www.nobleliftcanada.com

EASY TO OPERATE, FLEXIBLE AND SWIFT



OPH 12

Type:	OPH12
Load capacity:	1200kg
Max. lift height:	6000mm
Mx. mast extended height:	8215mm

OPH 12K

Type:	OPH12K
Load capacity:	1200kg
Max. lift height:	9000mm
Mx. mast extended height:	11215mm

360°

in-suit steering available with both chasis sizes,

Min. Turning radius only 1830mm

Min. aisle width 1300

TURNING RADIUS
1830MM



SAFETY ASSURED FOR HIGH-LEVEL TASKS

SPEED REDUCTION AT TURNS

Speed reduction at turns helps to ensure better maneuverability, especially at high-speed mode.

PALLET-LOCKING

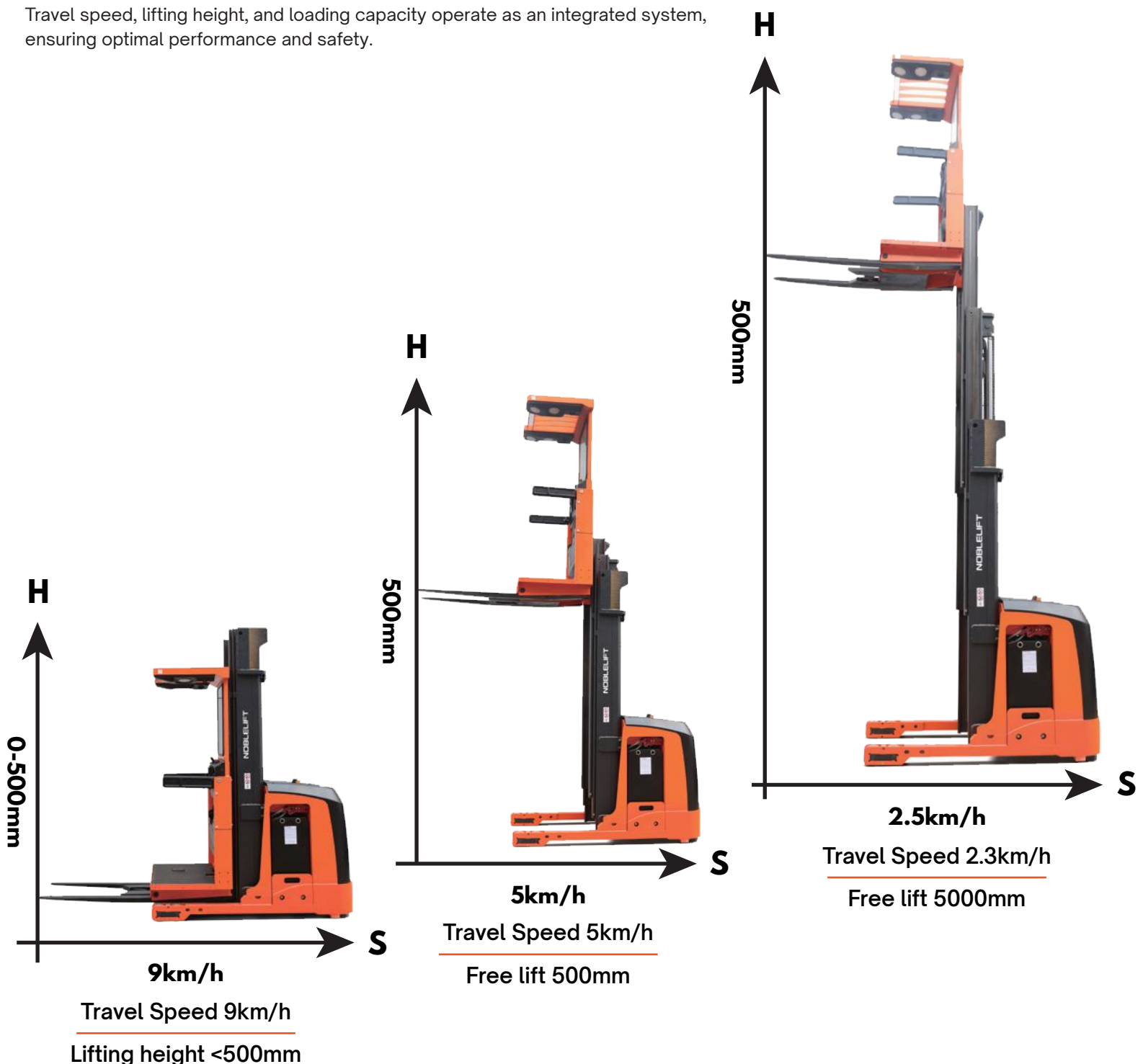
Auto Pallet-locking Device - capable of securely clamping pallet stringers ranging from 32 mm to 150mm, providing instant load stabilization and significantly boosting load handling speed.

SAFETY DEVICE

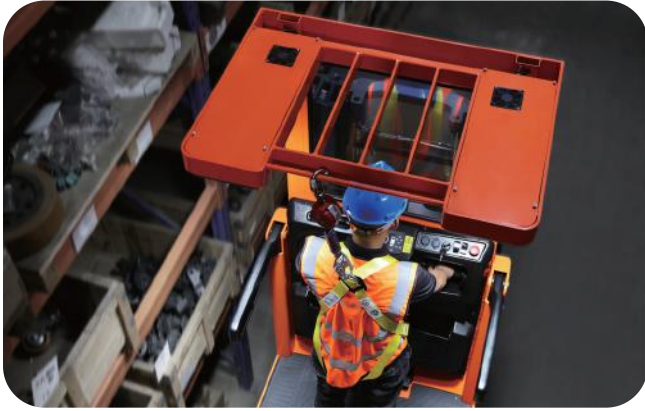
Equipped with a self-retracting fall limiter and safety belt, which provides good protection for the operator.

REAL-TIME DYNAMIC ADJUSTMENT OF KEY PARAMETERS ON THE BASIS OF THE TRUCK'S CURRENT STATE

Travel speed, lifting height, and loading capacity operate as an integrated system, ensuring optimal performance and safety.



UNRVALED STABILITY



MAST DURABILITY

The mast mechanism is crafted from high-strength and high-precision steel sections, and the excellent gap compensation structure design ensures the stability of the mast operation.

ROBUST CHASIS

The entire model range is constructed using imported channel steel. The chasis is available in two widths **1080mm** and **1420mm**, and the wide chasis allows the platform to reach a higher pick-up area, with a maximum picking height of up to 9 meters.

Multi-functional handle, striking a perfect balance between safety and functionality.



High-quality LED screen: lifting weight, lifting height, speed, power, steering, fault code, alarm and other information all at a glance.



Highly configured core components: enhancing efficiency, minimizing energy consumption. featuring AC drive, high-performance motors, imported gearbox, control programs tailored for high racks, satisfying various working conditions.



Platform and rack lights are fitted as standard for easy retrieval of goods in dimly lit areas



Standard high-power platform fan keeps operators comfortable in high temperatures.

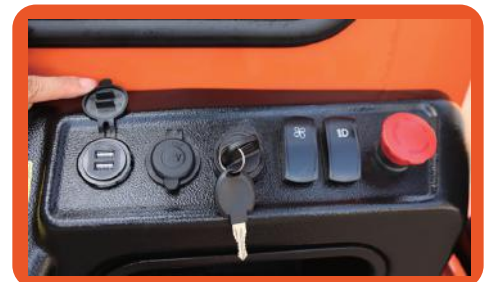


Standard safety warning lights; buzzer; blue light for a safe driving.



OPTIONAL

- Smart start: Optional PIN-code panel with RFID card access.
- Headlights for driving at night and in dark places.
- Large capacity battery, maximum battery capacity 24V/1000Ah; optional lithium battery, to meet the daily work of most of the warehouses.



TYPE SHEET FOR INDUSTRIAL TRUCK ACC. TO VDI 2198

1.1	Manufacturer								
1.2	Type				OPH12			OPH12K	
1.3	Power				Electric			Electric	
1.4	Operator type				Order picker			Order picker	
1.5	Load capacity		Q(kg/lb)		1200			2646	
1.6	Load centre		c(mm/in)		600			23.6	
1.8	Load distance	centre of support arm wheel to face of forks	x(mm/in)		175			6.9	
1.9	Wheel base		y(mm/in)		15.76			62	

WEIGHTS

2.1	Weight	With battery	kg/lb	3920	4020	4120	8642	8863	9083
2.2	Axle Load	w. load. front/rear	kg/lb	1569/3524	1664/3576	1703/3637	3519/7769	3624/7884	3754/8018
2.3	Axle Load	w. load. front/rear	kg/lb	2170/1750	2217/1803	2265/1855	4784/3858	4888/3975	4993/4090

TYRES

3.1	Tyres type			Polvurethane		Polvurethane			
3.2	Tyres	Front	xw(mm/in)		343x140			13.5x5.5	
3.3	Tyres	Rear	xw(mm/in)		152x74			6x2.9	
3.5	Wheels	number (x=driven) front/rear			1x/4			1x/4	
3.6	Track width	Front	b11(mm/in)		/			/	
3.7	Track width	Rear	b10(mm/in)		1304			51.3	

DIMENSIONS

4.2	Mast	Collapse height	h1(mm/in)	3145	3481	3815	123.8	137	150.2
4.3	Free lift		h2(mm/in)	2495	2831	3165	98.2	111.5	124.6
4.4	Lift height		h3(mm/in)	7000	8000	9000	275.6	315	354.3
4.5	Mast	Extended height	h4(mm/in)	9215	10215	11215	362.8	402.2	441.5
4.7	Overhead guard height		h6(mm/in)		2275			89.6	
4.8	Operator stand height	Lowered	h7(mm/in)		150			55.9	
4.11	Additional lift		h9(mm/in)		/			/	
4.14	Operator stand height	Raised	h12(mm/in)		1420			55.9	
4.15	Fork height	Lowered	h13(mm/in)		60			2.4	
4.20	Headlenght		l1(mm/in)		1985			78.1	
4.21	Overall width	Front/rear	b1/b2(mm/in)		1080/1420			42.5/55.9	
4.21a	Overall width	Operator platform	b9(mm/in)		1420			55.9	
4.22	Fork dimension	Standard	thxwxk(mm/in)		50x100x1070			2x3.9x42.1	
		Operational lenght	(mm/in)		760/915/990/1070/1220			55.9	
4.24	Fork carriage width		b3(mm/in)		/			/	
4.25	Width across forks	min. - max.	b5(mm/in)		610-790			24-31.1	
4.27	Width across guide rollers	in 6.5 mm(0.3inch) increments	b6(mm/in)		/			/	
4.31	Ground clearance	With load below mast	m1(mm/in)		60			2.4	
4.33	Working aisle width	minimum	Ast(mm/in)		1620			63.8	
4.35	Turning radius		Wa(mm/in)		1830			72	
4.42	Transfer aisle width	1000x1200(39.7x47.2) crosswise	Ast(mm/in)		1620			63.8	
		800x1200(31.4x47.2) lengthwise	Asts(mm/in)		1620			63.8	

PERFORMANCE					
5.1	Travel speed	w./w.o.load	km/h/mph	9	5.6
5.2	Lift speed	w./w.o.load	m/s/fps	0.15/0.23	0.49/0.75
5.3	Lowering speed	w./w.o.load	m/s/fps	0.30/0.30	0.98/0.98
5.10	Service break			electro-magnetic, regenerative	electro-magnetic, regenerative
MOTORS					
6.1	Traction motor	60 min. rating	kW	3.9	3.9
6.2	Lift motor	15% on time	kW	6.4	6.4
6.3	Max. battery box size		lxwLh(in)	374x975x785	14.7x38.4x30.9
6.4	Battery voltage	Nominal capacity K5	V/Ah	24V/1000	24V/1000
6.5	Battery weight	Minimum	kg/lb	810	1786
8.1	Type of controller	drive		AC traction	AC traction

TYPE SHEET FOR INDUSTRIAL TRUCK ACC. TO VDI 2198

GENERAL						
1.1	Manufacturer			NOBLELIFT		
1.2	Type			OPH12		
1.3	Power			Electric		
1.4	Operator type			Order picker		
1.5	Load capacity		lb	2646		
1.6	Load centre		c(in)	23.6		
1.8	Load distance	centre of support arm wheel to face of forks	x(in)	6.9		
1.9	Wheel base		y(in)	62		
WEIGHTS						
2.1	Weight	With battery	lb	7562	7628	7893
2.2	Axle load	w. load. front/rear	lb	3117/7090	3131/7143	3289/7249
2.3	Axle load	w. load. front/rear	lb	4345/3217	4376/3252	4502/3391
TYRES						
3.1	Tyres type			Polyurethane		
3.2	Tyres	Front	in	13.5x5.5		
3.3	Tyres	Rear	in	6x2.9		
3.5	Wheels	number (x=driven) front/rear		1x/4		
3.6	Track width	Front	b11(in)	/		
3.7	Track width	Rear	b10(in)	38		
DIMENSIONS						
4.2	Mast	Collapsed height	h1(in)	91.1	95.1	110.8
4.3	Free lift		h2(in)	65.6	69.5	85.2
4.4	Lift height		h3(in)	177.2	189	236.2
4.5	Mast	Extended height	h4(in)	264.4	276.2	323.4
4.7	Overhead guard height		h6(in)	89.6		
4.8	Operator stand height	Lowered	h7(in)	5.9		
4.11	Additional lift		h9(in)	/		

4.14	Operator stand height	Raised	h12(in)	42.5
4.15	Fork height	Lowered	h13(in)	2.4
4.20	Headlenght		12(in)	78.1
4.21	Overall width	Front/Rear	b1/b2(in)	42.5/42.1
4.21a	Overall width	Operator platform	b9(in)	42.1
4.22	Fork Dimension	Standard	thxwxl(in)	2x3.9x42.1
		Optional length	in	29.9x36x39x42.1x48
4.24	Fork carriage width		b3(in)	/
4.25	Width across forks	min. - max.	b5(in)	24-31.1
4.27	Width across guide rollers	in 0.3 inch increments	b6(in)	/
4.31	Ground clearance	With load below mast	m1(in)	2.4
4.33	Working aisle width	Minimum	Ast(in)	51.2
4.35	Turning radius		Wa(in)	72
4.42	Transfer aisle width	39.4x47.2 crosswise	Ast3(in)	55.1
		31.4x47.2 Lengthwise	Asts(in)	51.2

PERFORMANCE

5.1	Travel speed	w./w.o.load	mph	5.6
5.2	Lift speed	w./w.o.load	m/s/fps	0.49/0.75
5.3	Lowering speed	w./w.o.load	m/s/fps	0.98/0.98
5.10	Service break			electro-magnetic, regenerative

MOTORS

6.1	Traction motor	60 min. rating	kW	3.9
6.2	Lift motor	15% on time	kW	6.4
6.3	Max. battery box size		lxwlh(in)	14.7x38.4x30.9
6.4	Battery voltage	Nominal capacity K5	V/Ah	24V/1000
6.5	Battery weight	Minimum	kg/lb	1786

8.1	Type of controller	drive		AC traction
-----	--------------------	-------	--	-------------

TYPE SHEET FOR INDUSTRIAL TRUCK ACC. TO VDI 2198

GENERAL

1.1	Manufacturer			NOBLELIFT
1.2	Type			OPH12
1.3	Power			Electric
1.4	Operator type			Order picker
1.5	Load capacity		kg	1200
1.6	Load centre		c(mm)	600
1.8	Load distance	centre of support arm wheel to face of forks	x(mm)	6.9
1.9	Wheel base		y(mm)	1576

WEIGHTS

2.1	Weight	With battery	kg	3430	3460	3580
2.2	Axle load	w. load. front/rear	kg	1414/3216	1420/3240	1492/3288
2.3	Axle load	w. load. front/rear	kg	1971/1459	1985/1475	2042/1538

TYRES

3.1	Tyres type			Polvurethane
3.2	Tyres	Front	mm	343x140
3.3	Tyres	Rear	mm	152x74
3.5	Wheels	number (x=driven) front/rear		1x/4
3.6	Track width	Front	b11(mm)	/
3.7	Track width	Rear	b10(mm)	964

DIMENSIONS

4.2	Mast	Collapsed height	h1(mm)	2315	2415	2815
4.3	Free lift		h2(mm)	1665	1765	2165
4.4	Lift height		h3(mm)	4500	4800	6000
4.5	Mast	Extended height	h4(mm)	6715	7015	8215
4.7	Overhead guard height		h6(mm)	2275		
4.8	Operator stand height	Lowered	h7(mm)	150		
4.11	Additional lift		h9(mm)	/		
4.14	Operator stand height	Raised	h12(mm)	1080		
4.15	Fork height	Lowered	h13(mm)	60		
4.20	Headlength		12(mm)	1985		
4.21	Overall width	Front/Rear	b1/b2(mm)	1080/1070		
4.21a	Overall width	Operator platform	b9(mm)	1070		
4.22	Fork Dimension	Standard	thxwxl(mm)	50x100x1070		
		Optional length		760/915/990/1070/1220		
4.24	Fork carriage width		b3(mm)	/		
4.25	Width across forks	min. - max.	b5(mm)	610/790		
4.27	Width across guide rollers	in 6.5 mm increments	b6(mm)	/		
4.31	Ground clearance	With load below mast	m1(mm)	60		
4.33	Working aisle width	Minimum	Ast(mm)	1300		
4.35	Turning radius		Wa(mm)	1830		
4.42	Transfer aisle width	1000x1200 crosswise	Ast3(mm)	55.1		
		800x1200 Lengthwise	Asts(mm)	1300		

PERFORMANCE

5.1	Travel speed	w./w.o.load	km/h	9
5.2	Lift speed	w./w.o.load	m/s	0.15/0.23
5.3	Lowering speed	w./w.o.load	m/s	0.30/0.30
5.10	Service brake			electro-magnetic, regenerative

MOTORS

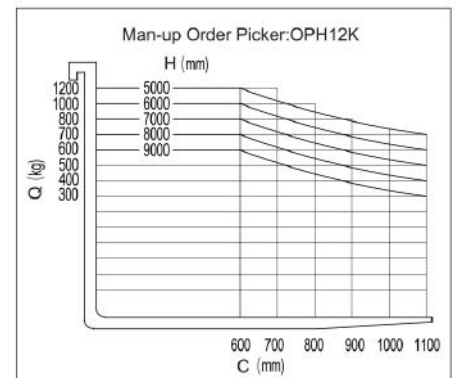
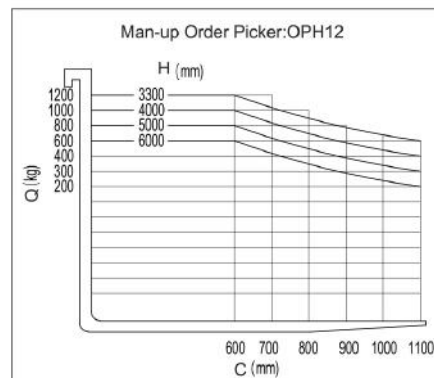
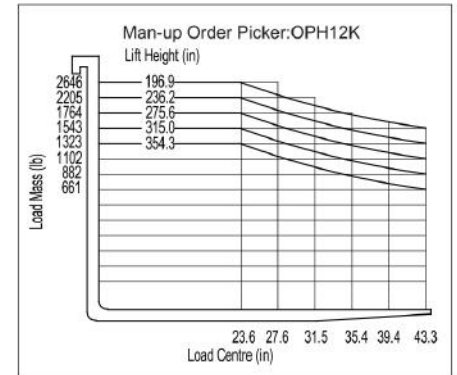
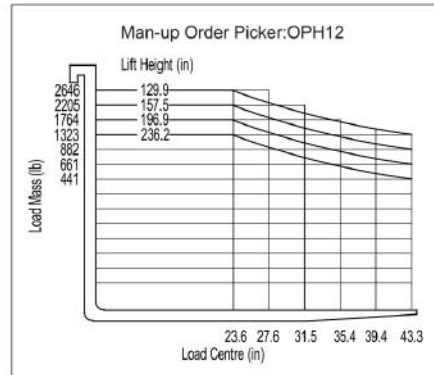
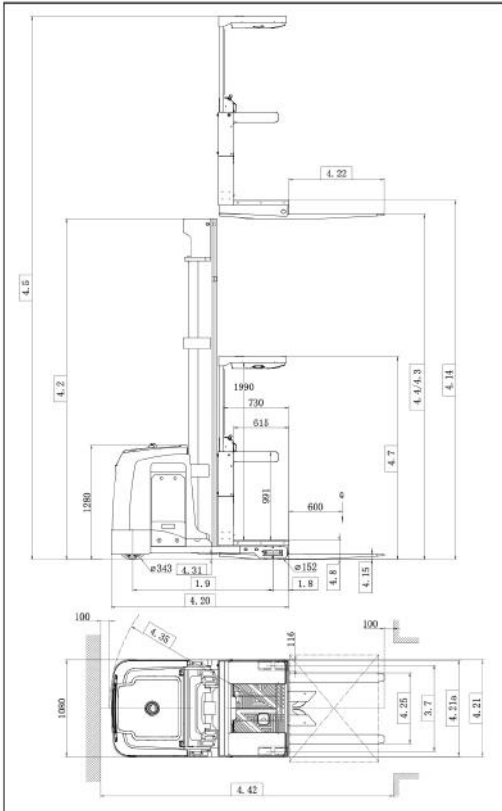
6.1	Traction motor	60 min. rating	kW	3.9
6.2	Lift motor	15% on time	kW	6.4
6.3	Max. battery box size		lxwlh(mm)	374x975x785
6.4	Battery voltage	Nominal capacity K5	V/Ah	24V/1000
6.5	Battery weight	Minimum	kg	810

8.1	Type of controller	drive		AC traction
-----	--------------------	-------	--	-------------

OPH 12/ OPH 12K

ELECTRIC ORDER PICKER

As e-commerce continues to surge in popularity and businesses embrace just-in-time inventory practices, order picking has become an integral part of daily operations in the warehousing industry. In order to meet the needs of customers with up to 9 meters of high storage racks, Noblift has developed an electric order picker OPH12/OPH12K with a compact and ergonomic design, high performance AC drive, high capacity battery.



NOBLELIFT
CANADA  INC.

-  850 RUE ELLINGHAM, POINTE-CLAIRE
QUEBEC H9R 3S4
-  (514) 697-0117
-  INFO@NOBLELIFTCA.COM
-  WWW.NOBLELIFTCANADA.COM