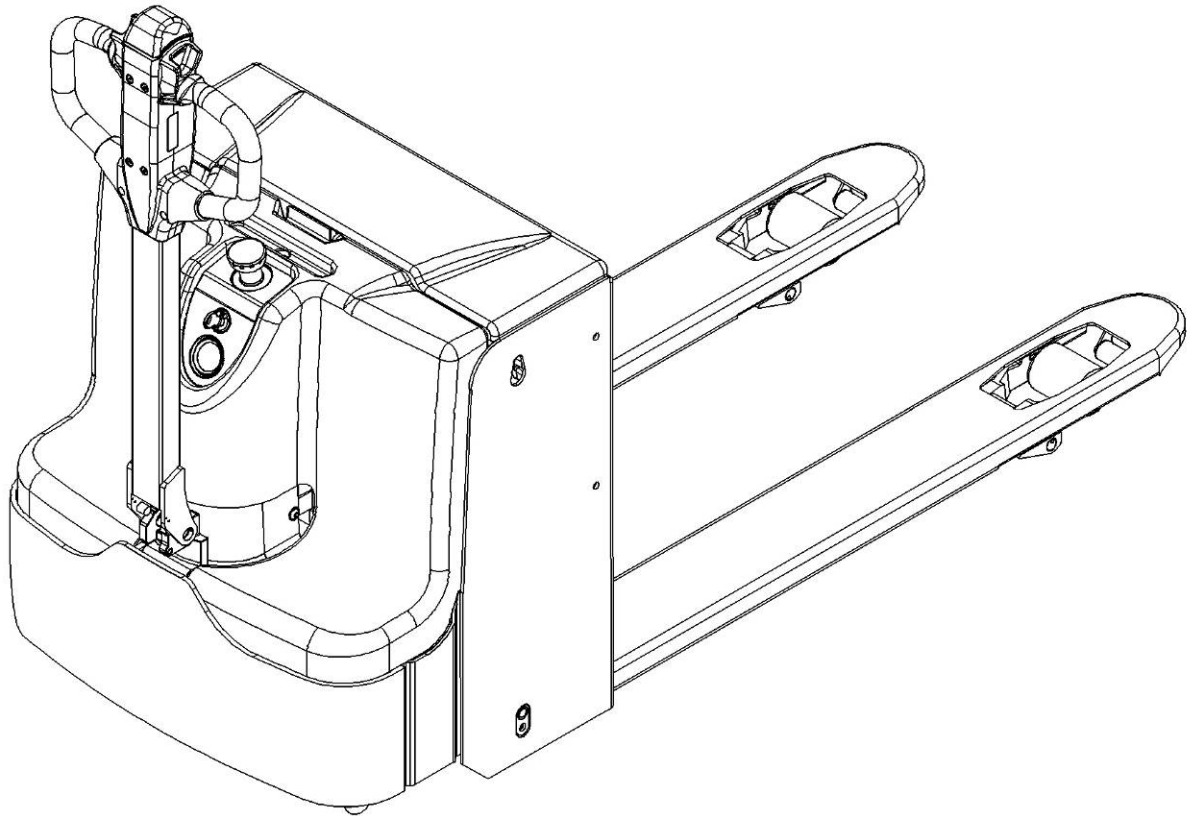


SPAREPARTS LIST

Electric Pallet Truck PTE 18L



Version 10/2016

From truck identification number:

20161000001

PTE18L-BPT-003-EN

Catalogue

Fig.1 Outline (US).....	2
Fig.2 Outline (EU).....	4
Fig.3 Chassis (US)	6
Fig.4 Chassis (EU)	8
Fig.5 Load wheel (US)	10
Fig.6 Load wheel (EU)	12
Fig.7 Truck body assembly (US)	14
Fig.8 Truck body assembly (EU)	16
Fig.9 Drive wheel assembly.....	18
Fig.10 Drive assembly.....	20
Fig.11 Drive wheel.....	22
Fig.12 Installation of battery and charger (US).....	24
Fig.13 Battery assembly (EU).....	26
Fig.14 Handle assembly.....	28
Fig.15 Handle head.....	30
Fig.16 Hydraulic assembly	32
Fig.17 Pump.....	34
Fig.18 Electrical assembly.....	36
Fig.19 Controller assembly.....	40
Fig.20 Main harness (US).....	44
Fig.21 Main harness (EU).....	46
Fig.22 Label (EU)	48
Fig.23 Label (US)	50
Easy worn parts list	52

Fig.1 Outline (US)

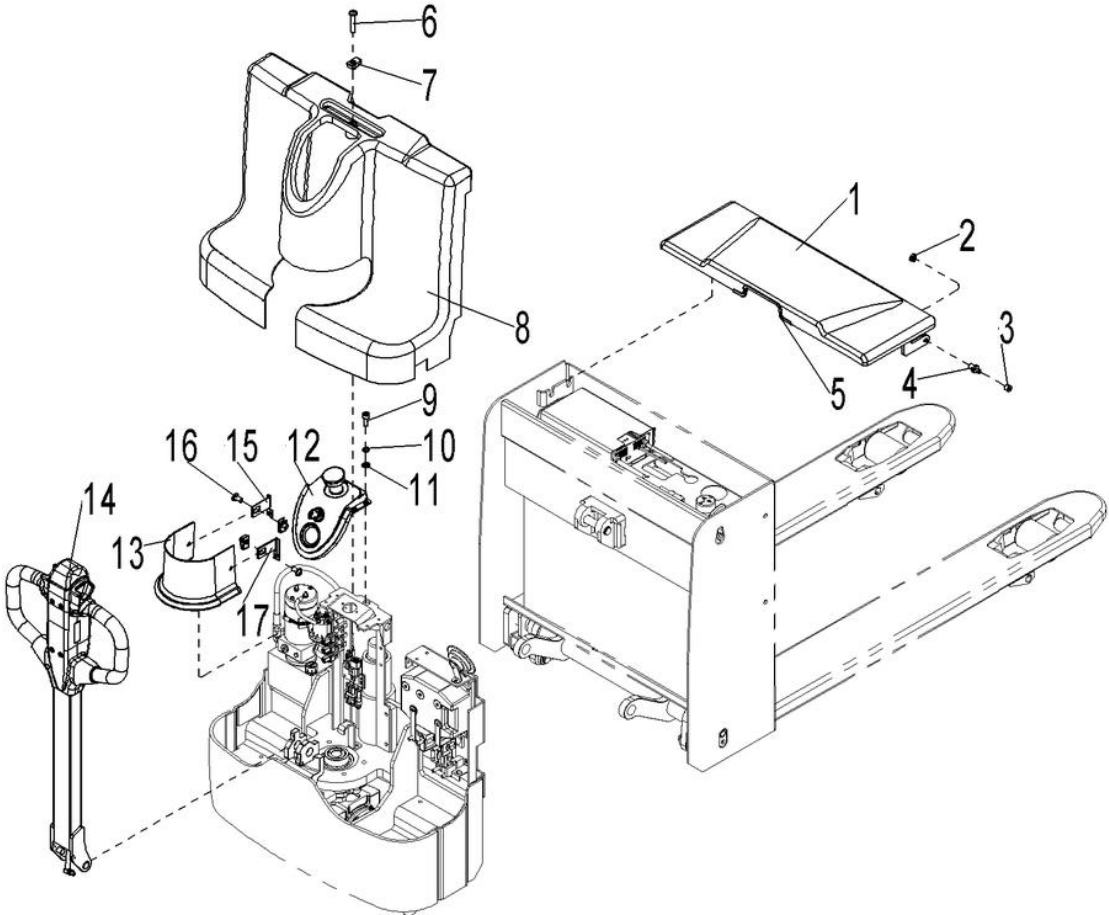


Fig.1 Outline (US)

No.	Art No.	Description	Qty.	Note
1	9000010661	Battery cover assembly	1	
2	0000023005	Nut	3	M10
3	9000008047	Rubber ring	3	
4	9000008057	Hinge axle	3	
5	9000008339	Seal strip	1	
6	9000007792	Screw	1	M10X45
7	9000007783	Nut	3	
8	9000010662	Electrical box main cover	1	
9	0000023040	Screw	4	M6x16
10	0000025010	Spring washer	4	6
11	0000023055	Washer	4	6
12	9000010663	Indicator cover	1	
13	9000010664	Motor cover	1	
14	504511001001	Tiller assembly	1	
15	9000011593	Fixing plate	1	
16	1000423001	Screw	2	M10X20
17	9000011594	Fixing plate	1	

Fig.2 Outline (EU)

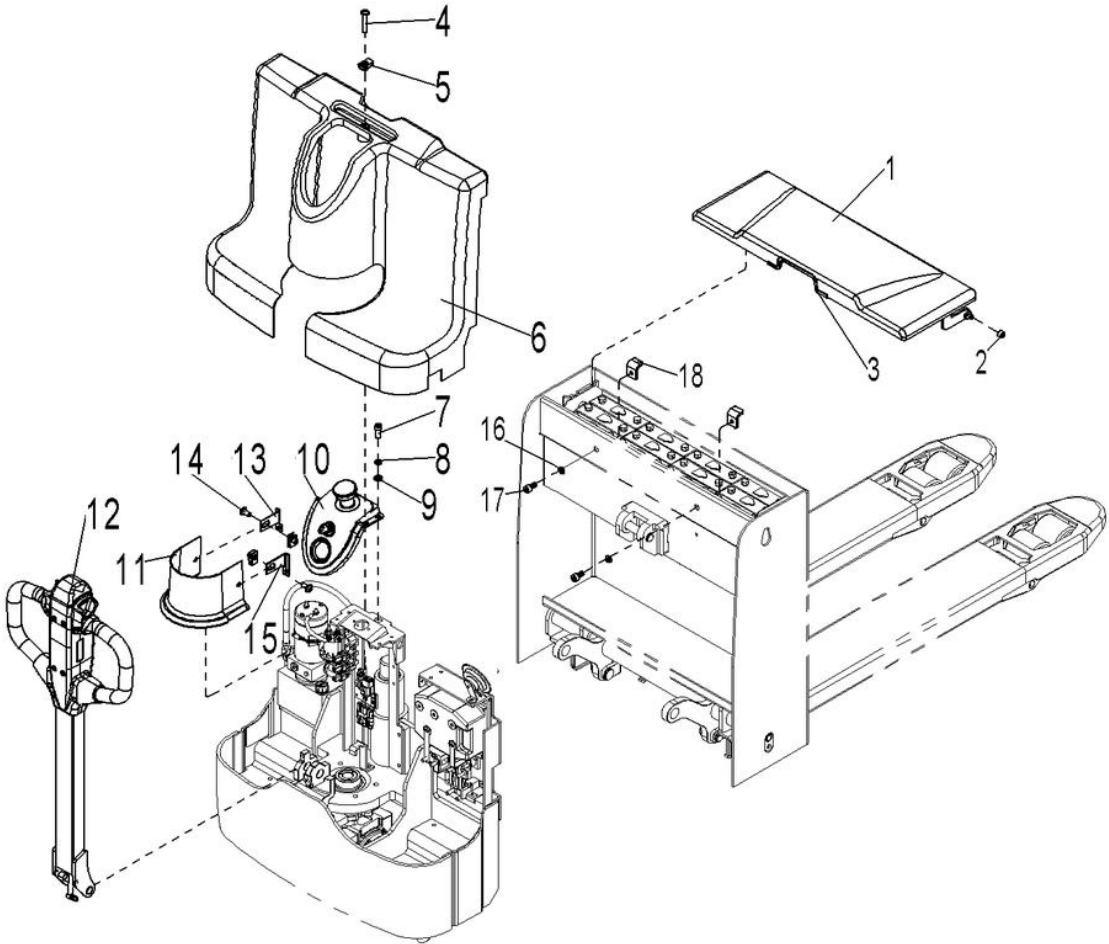


Fig.2 Outline (EU)

No.	Art No.	Description	Qty.	Note
1	9000010661	Battery cover assembly	1	
2	9000008047	Rubber ring	3	
3	9000008339	Seal strip	1	
4	9000007792	Screw	1	M10X45
5	9000007783	Nut	3	
6	9000010662	Electrical box main cover	1	
7	0000023040	Screw	4	M6x16
8	0000025010	Spring washer	4	6
9	0000023055	Washer	4	6
10	9000010663	Indicator cover	1	
11	9000010664	Motor cover	1	
12	504511001001	Tiller assembly	1	
13	9000011593	Fixing plate	1	
14	1000423001	Screw	2	M10X20
15	9000011594	Fixing plate	1	
16	0000025001	Spring washer	2	8
17	0000023044	Screw	2	M8x20
18	9000010646	Battery limit block	2	

Fig.3 Chassis (US)

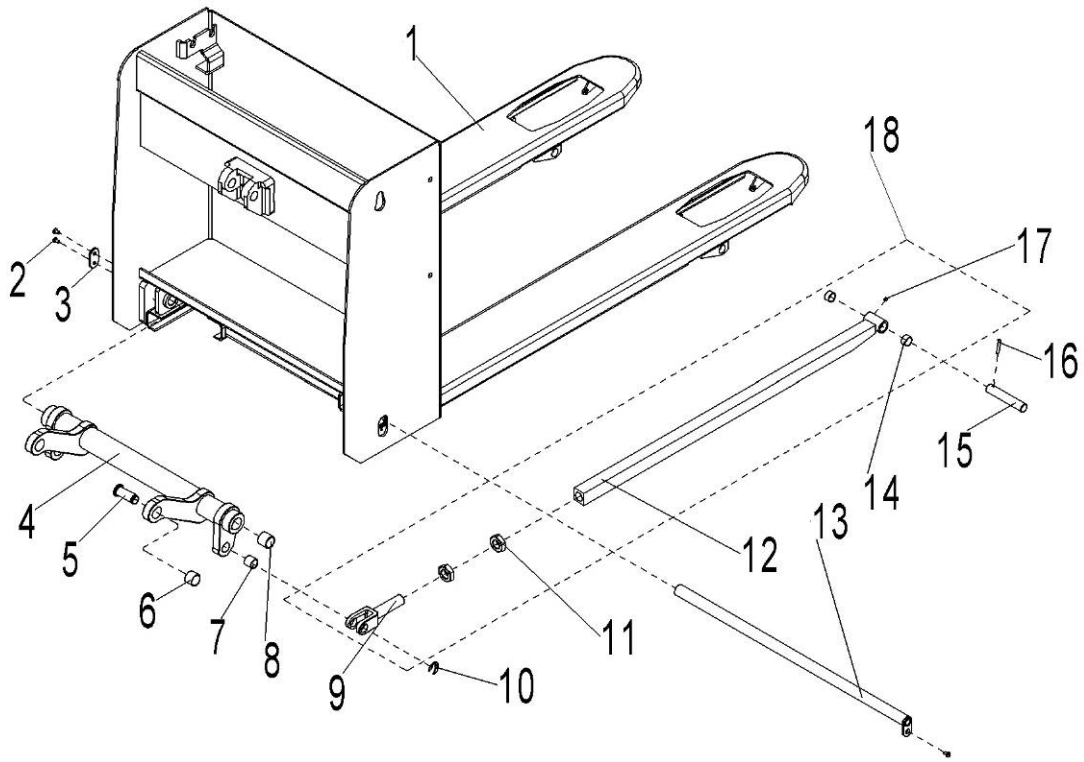


Fig.3 Chassis (US)

No.	Art No.	Description	Qty.	Note
1	504538510001	Chassis	1	685x1220
2	0000023091	Screw	3	M6x12
3	1000504001	Fixing plate	1	
4	504538510002	Rock arm	1	685
5	9000008052	Fork shaft	1	
6	0000013024	Bushing	2	25x28x20
7	0000013001	Bushing	2	20x23x20
8	0000027006	Bushing	2	25x29x25
9	9000008053	Push rod fork	2	
10	0000026001	Circlip	2	15
11	0000024178	Nut	4	M24x1.5
12	504538510003	Push rod assembly	2	1220
13	9000008048	Rock arm axle assembly	1	
14	0000027005	Bushing	4	20x22x12
15	9000008055	Push rod axle	2	
16	0090000744	Dowel pin	2	5x28
17	0000030001	Grease cup	2	6
18	504598510001	Push rod kit	2	1220

Fig.4 Chassis (EU)

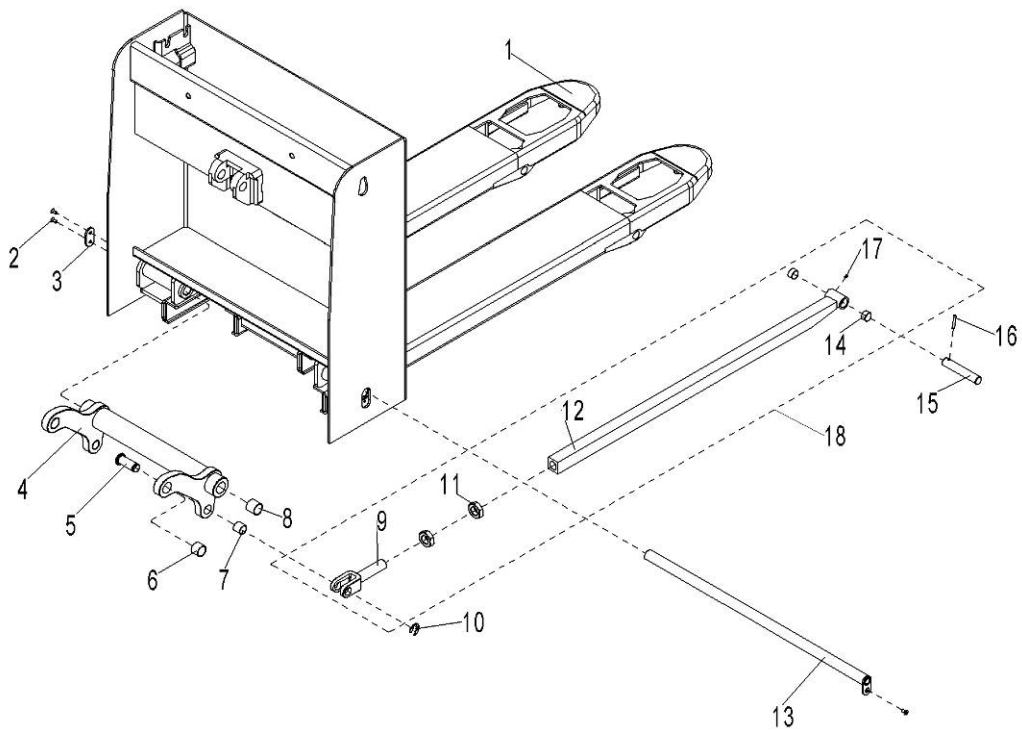


Fig.4 Chassis (EU)

No.	Art No.	Description	Qty.	Note
1	9000016020	Chassis	1	540x1150
	9000016021	Chassis		685x1220
2	0000023091	Screw	3	M6×12
3	1000504001	Fixing plate	1	
4	9000008044	Rock arm	1	540
	9000008906	Rock arm		685
5	9000008052	Fork shaft	1	
6	0000013024	Bushing	2	25x28x20
7	0000013001	Bushing	2	20x23x20
8	0000027006	Bushing	2	25x29x25
9	9000008053	Push rod fork	2	
10	0000026001	Circlip	2	15
11	0000024178	Nut	4	M24×1.5
12	9000010670	Push rod assembly (1150)	2	
	9000010935	Push rod assembly (1220)	2	
13	9000008048	Rock arm axle assembly	1	
14	0000027005	Bushing	4	20×22×12
15	9000008055	Push rod axle	2	
16	0090000744	Dowel pin	2	5x28
17	0000030001	Grease cup	2	6
18	9000010671	Push rod kit	2	1150
	9000010940	Push rod kit	2	1220

Fig.5 Load wheel (US)

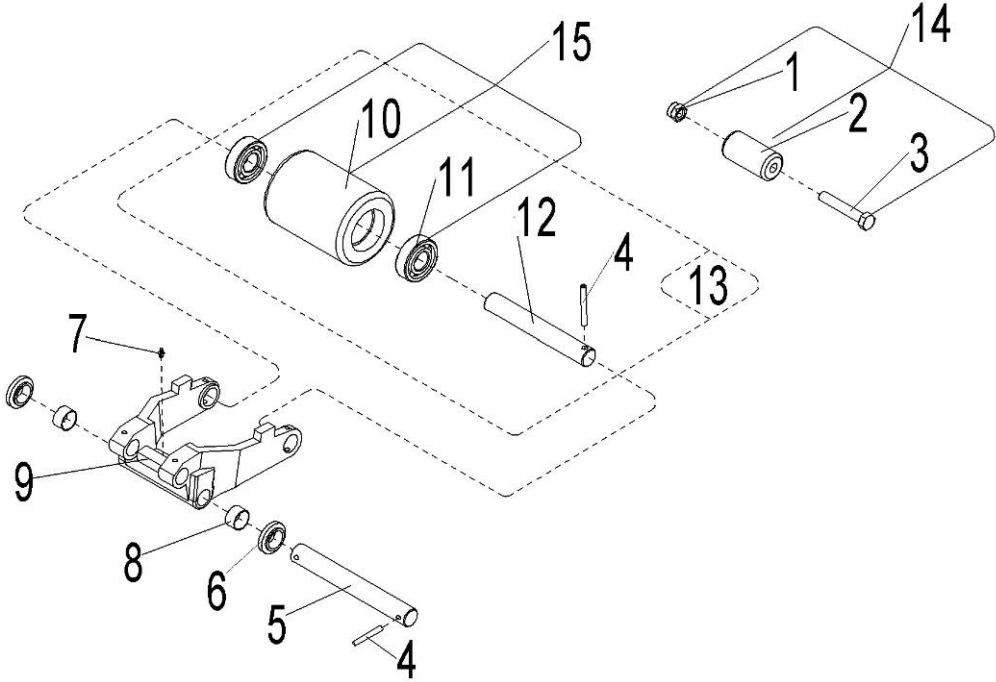


Fig.5 Load Wheel (US)

No.	Art No.	Description	Qty.	Note
1	0000023005	Lock nut	6	M10
2	504538520021	Entry roller	6	
3	0000023628	Bolt	6	M10x85
4	0090000745	Dowel pin	4	5x35
5	9000012090	Shaft	2	
6	1500302005	Roller	4	
7	0000030002	Grease nipple	2	M6
8	9000016570	Bushing	4	20x23x12
9	9000008054	Frame for load roller	2	
10	9000014899	Load wheel	2	74x100
11	0000027001	Bearing	4	6204
12	9000012095	Small wheel axle	2	
13	504517001001	Load wheel assembly	2	
14	504598510002	Entry roller fittings	2	
15	504598510003	Small wheel set	4	

Fig.6 Load wheel (EU)

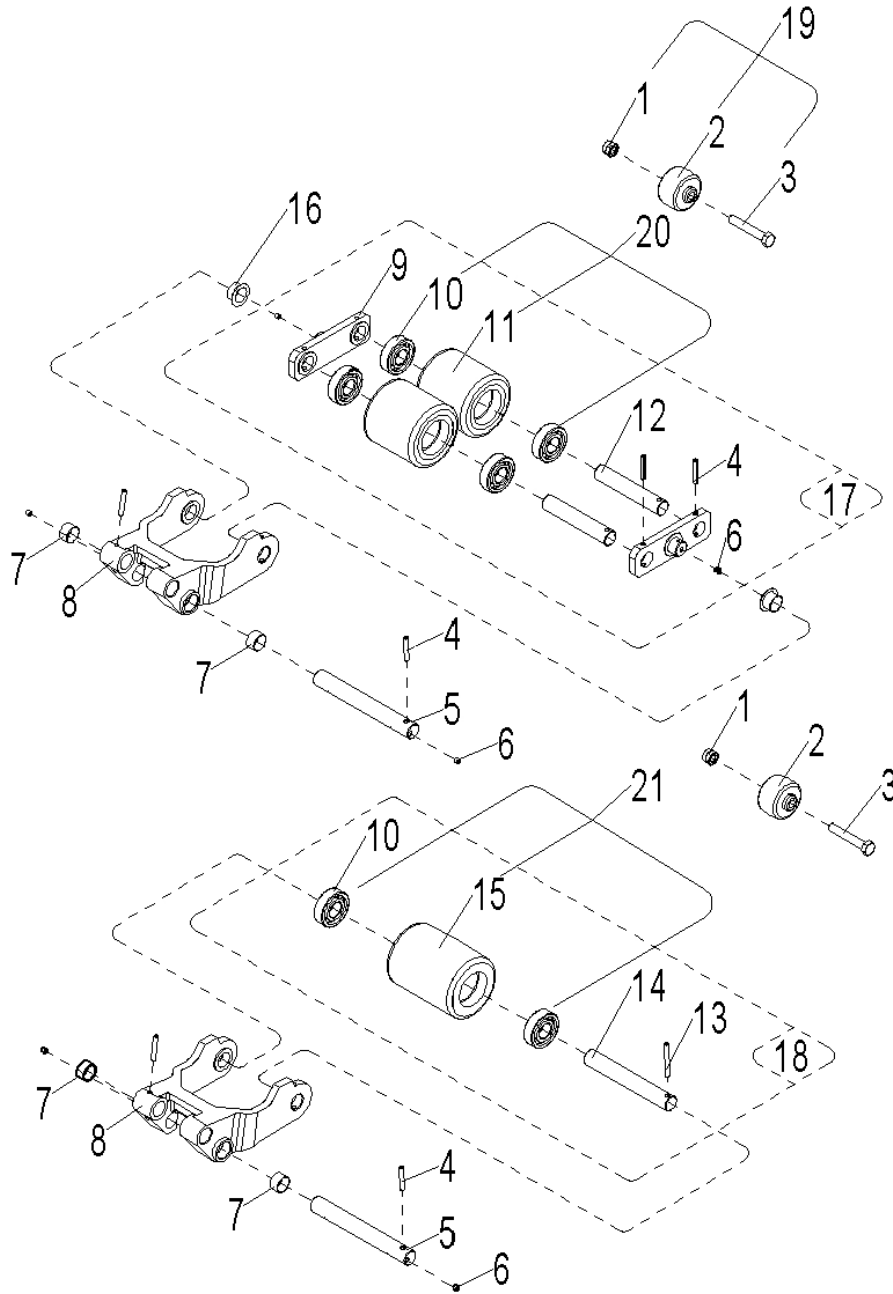


Fig.6 Load Wheel (EU)

No.	Art No.	Description	Qty.	Note
1	0000023005	Lock nut	2	M10
2	1000516001	Entry roller	2	
3	0000023004	Bolt	2	M10×60
4	0090000745	Dowel pin	6/2(双/单)	5×35
5	9000008056	Shaft	2	
6	0000030001	Grease nipple	2	6
7	0000027005	Bushing	4	20×22×12
8	9000008054	Frame for load roller	2	
9	9000008077	Linking plate	4	
10	0000027001	Bearing	8/4(D/S)	6204
11	9000008791	Load roller	4(D)	84×84
12	9000008076	Spindle	4(D)	
13	0090000769	Dowel pin	2(S)	5×40
14	9000008227	Small wheel axle	2(S)	
15	9000007766	Load roller	2(S)	82×110
16	9000002333	Bushing	4(D)	18×20×12
17	9000008913	Load roller assembly	2	
18	9000008914	Load roller assembly	2	
19	9000010400	Entry roller fittings	2	
20	9000010421	Wheel set fittings	4	
21	9000010422	Wheel set fittings	2	

Fig.7 Truck body assembly (US)

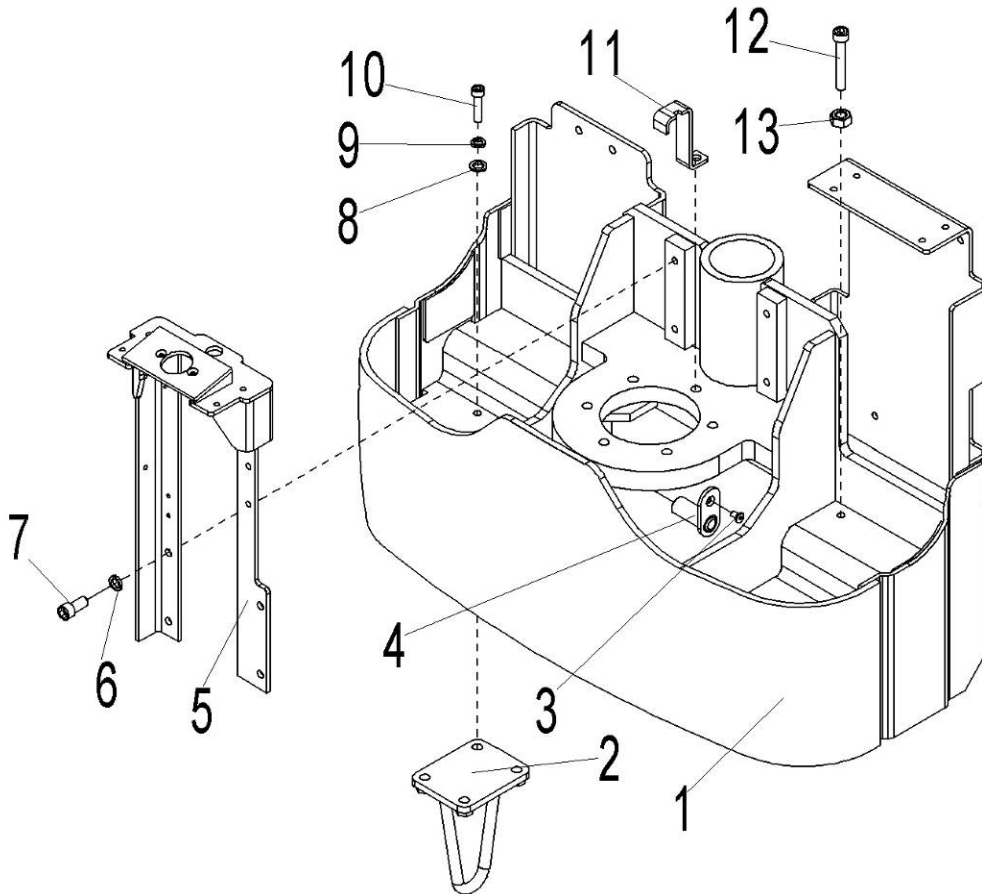


Fig.7 Truck Body Assembly (US)

No.	Art No.	Description	Qty.	Note
1	504521510001	Truck body	1	
2	504521510002	Support rod	2	
3	0000023091	Screw	2	M6x12
4	9000008281	Fixed shaft	2	
5	9000010680	Indicator seat	1	
6	0000025001	Spring washer	4	8
7	0000023067	Screw	4	M8x16
8	0000025002	Washer	8	10
9	0000023006	Spring washer	8	10
10	0000023025	Screw	8	M10×40
11	504521520012	Wire holder	1	
12	0000023214	Screw	2	M10x50
13	0000024013	Nut	2	M10

Fig.8 Truck body assembly (EU)

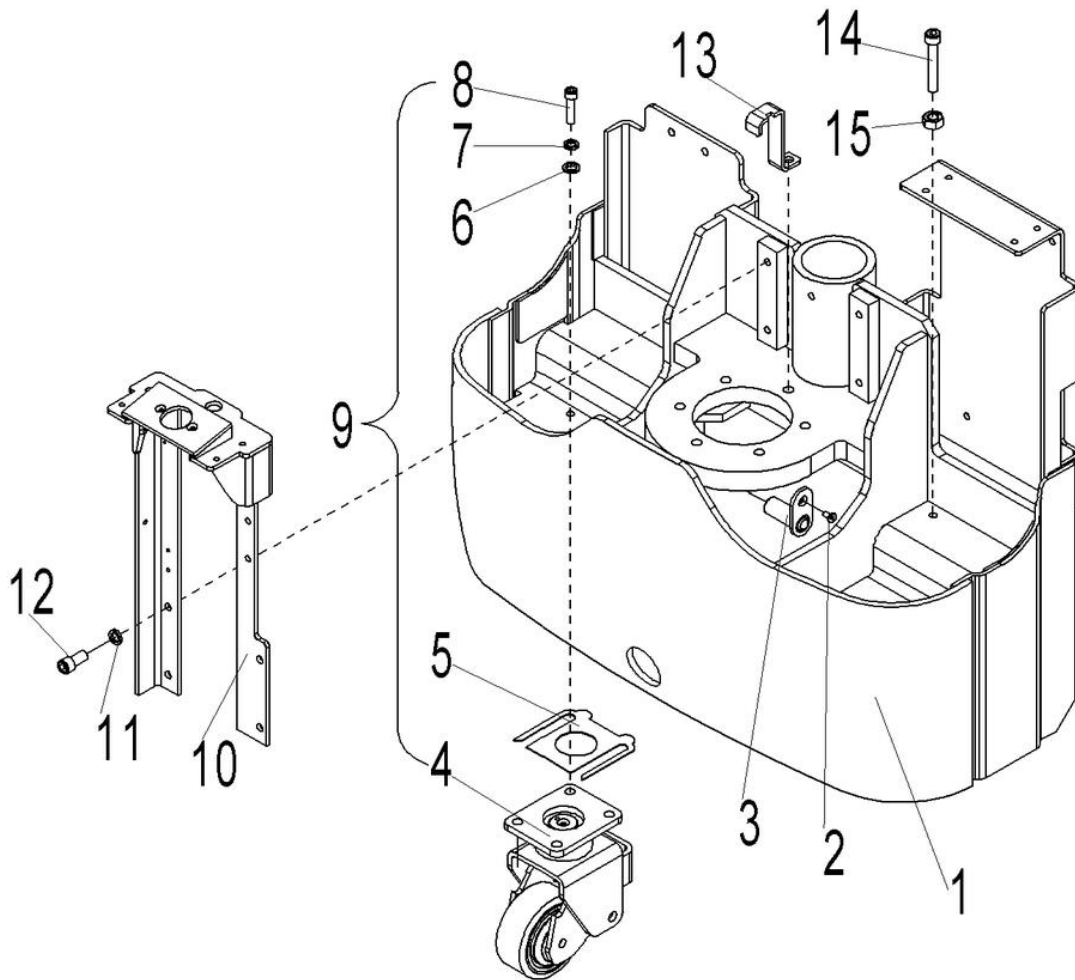


Fig.8 Truck Body Assembly (EU)

No.	Art No.	Description	Qty.	Note
1	504521510003	Truck body	1	
2	0000023091	Screw	2	M6x12
3	9000008281	Fixing axle	2	
4	9000010715	Steering wheel fittings	2	
5	1000404031	Adjusting washer	some	1mm
	1000404032	Adjusting washer		0.5mm
6	0000025002	Washer	8	10
7	0000023006	Washer	8	10
8	0000023025	Screw	8	M10×40
9	9000011776	Steering wheel kits	2	
10	9000010680	Indicator seat	1	
11	0000025001	Washer	4	8
12	0000023067	Screw	4	M8x16
13	504521520012	Wire holder	1	
14	0000023214	Screw	2	M10x50
15	0000024013	Nut	2	M10

Fig.9 Drive wheel assembly

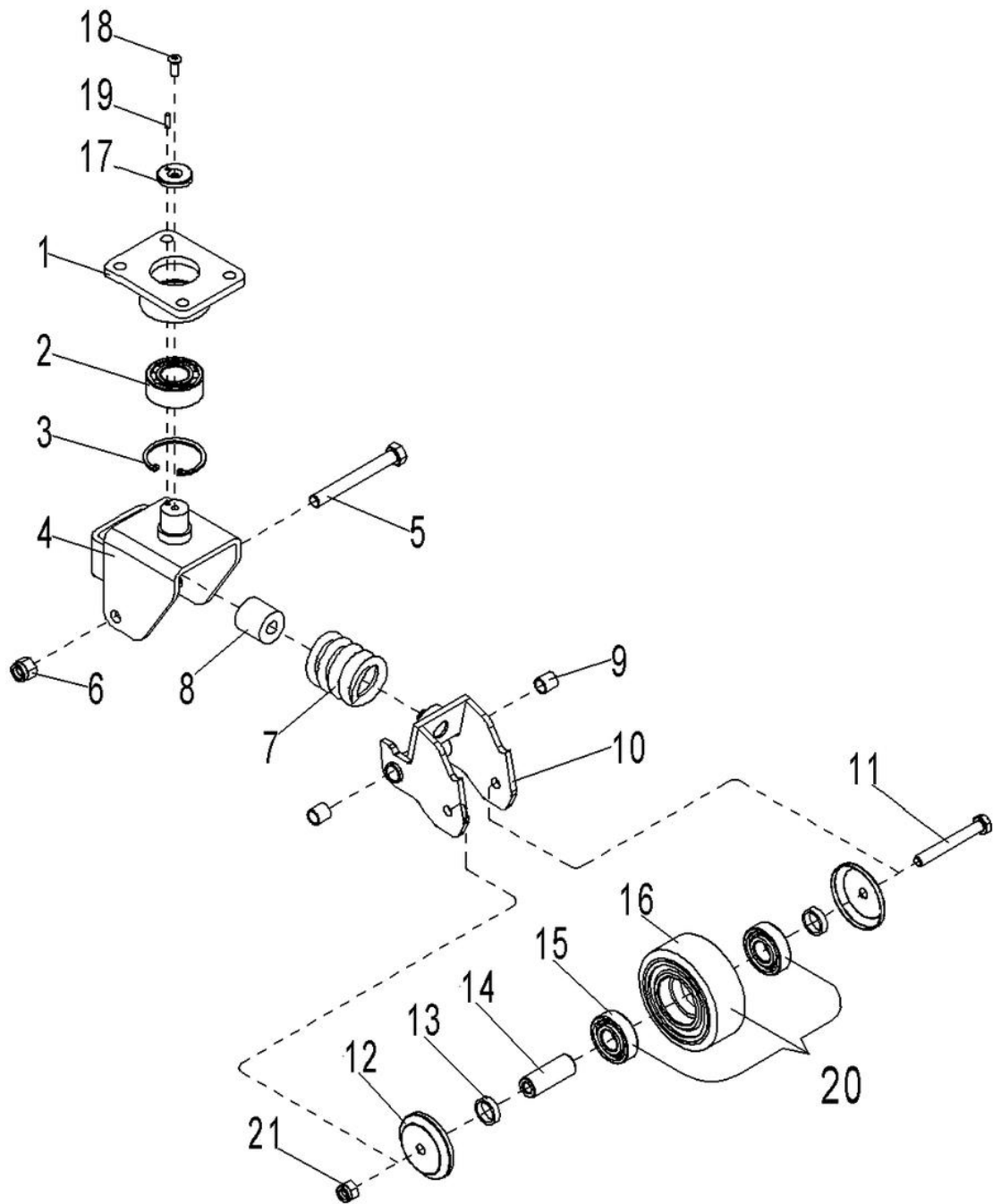


Fig.9 Drive Wheel Assembly

No.	Art No.	Description	Qty.	Note
1	9000011774	Linking plate	2	
2	0000027002	Bearing	2	3056205
3	0000026002	Circlip	2	52
4	1000401006	Wheel frame fittings	2	
5	1000423004	Screw	2	M12×100
6	0000024006	Nut	2	M12
7	1000431002	Spring	2	∅6, length 62
8	1000419001	Spring	2	
9	1000413002	Bushing	4	12×15×15
10	1000401008	Rotating arm	2	
11	0000023035	Bolt	2	M10×80
12	1000404023	Dust cover	4	
13	1000425003	Washer	4	
14	1000402005	Sleeve	2	
15	0000027001	Bearing	4	6204
16	1000403008	Balance castor	2	100×40
17	1000426001	Circlip	2	
18	1000523002	Screw	2	M6×14
19	0000028004	Dowel pin	2	4×14
20	9000008903	Wheel set	2	
21	0000023005	Nut	2	M10

Fig.10 Drive assembly

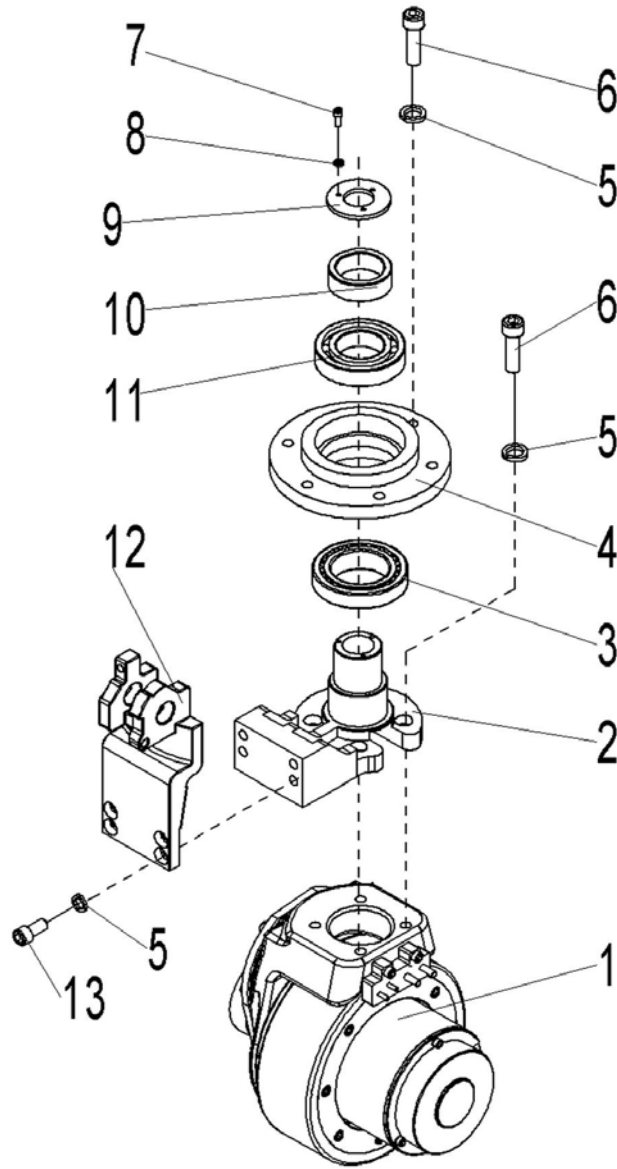


Fig.10 Drive Wheel Assembly

No.	Art No.	Description	Qty.	Note
1	940900300005	AC drive assembly	1	0.75KW
2	504513520002	Connecting flange	1	
3	0090000038	Bearing	1	32011
4	9000002086	Bearing seat	1	
5	0000023006	Washer	14	10
6	0000023029	Screw	10	M10x35
7	0000023056	Screw	3	M4x12
8	0000025018	Washer	3	4
9	504513520003	Pressure plate	1	
10	504521520001	Locating sleeve	1	
11	0000027048	Bearing	1	6209
12	504521520004	Tiller seat	1	
13	0000023034	Screw	4	M10x20

Fig.11 Drive wheel

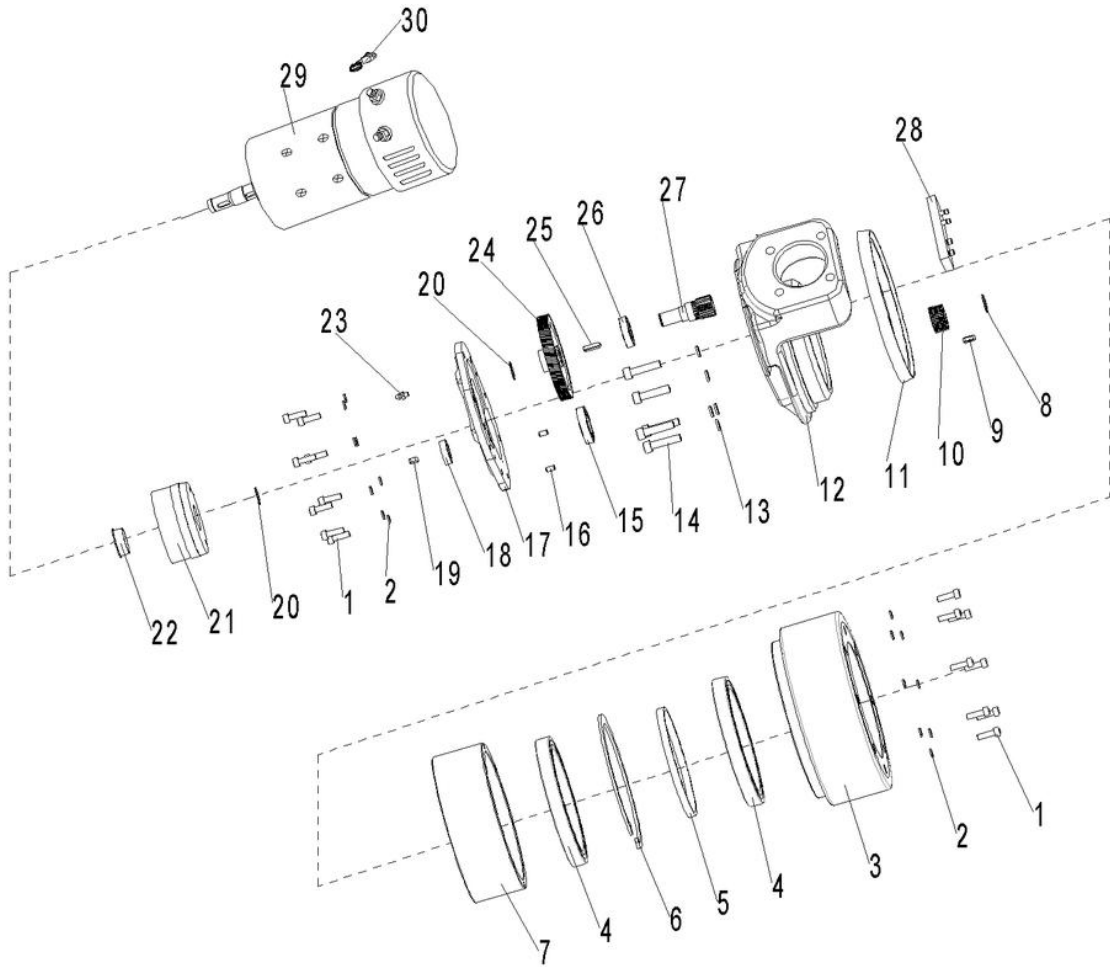


Fig.11 Drive Wheel

No.	Art No.	Description	Qty.	Note
1	0000023062	Screw	16	M6×20
2	0000025006	Elastic washer	16	6
3	9000011564	PU wheel	1	
4	0090000179	Bearing	2	61824
5	9000011565	Adjusting washer	1	
6	0090000180	Retaining ring	1	150
7	9000011566	Annular gear	1	
8	0090000625	Retaining ring	1	16
9	0090000498	Flat key	1	A 5×14
10	9000011567	Small gear	1	
11	9000011568	Oil seal	1	
12	9000011569	Gear box	1	
13	0000025004	Elastic washer	5	8
14	0000023487	Screw	5	M8×35
15	0000027086	Bearing	1	61905
16	0000028141	Round pin	2	5×15
17	9000011570	Gear cover	1	
18	0090000702	Framework oil seal	1	16×28×7
19	0090000704	Flat key	1	A 5×8
20	0000026004	Retaining ring	2	15
21	9000011577	Brake	1	6N.M
22	9000011571	Plug screw	1	
23	0000030028	Forced filling oil cup	1	M8×1
24	9000011572	Big gear	1	
25	0000036011	Flat key	1	A 5×20
26	0000027037	Bearing	1	6003
27	9000011573	Small gear	1	
28	9000011574	Terminal box	1	
29	9000018333	motor	1	ZPJ71-04
30	9000018334	sensor	1	KTY84-150

Fig.12 Installation of battery and charger (US)

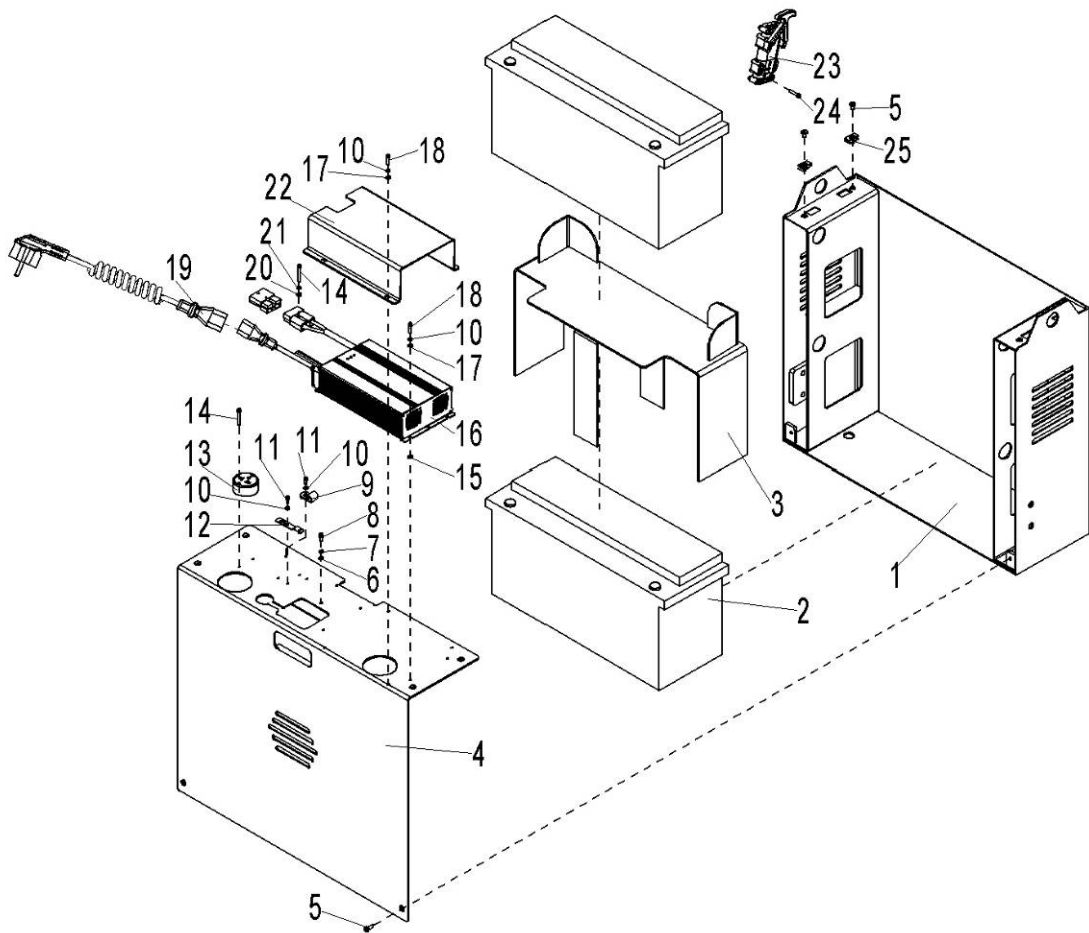


Fig.12 Installation of Battery and Charger (US)

No.	Art No.	Description	Qty.	Note
1	504537010002	Box assembly	1	
2	920600100008	Battery	2	12V/160Ah5HR
3	504537010003	Battery carrier	1	
4	504537010004	Side cover	1	
5	0000023864	Screw	6	M6x16
6	1000425002	Washer	1	6
7	0000025010	Washer	1	6
8	0000023053	Screw	1	M6x12
9	9000005742	Cable clamp	2	
10	0000025018	Washer	12	4
11	0000023052	Screw	4	M4x8
12	9000009890	Plug fixing seat	1	
13	1010404001	Socket fixing plate	1	
14	0000023685	Screw	4	M3x25
15	1000418002	Valve pad	4	11.5X7.5X3
16	9000016566	Charger	1	20A/24V
17	0000025019	Washer	12	4
18	0000023056	Screw	8	M4x12
19	2530334005	Plug	1	3*0.75(美式)
20	0000025026	Washer	2	3
21	0000025003	Washer	2	3
22	504537020013	Charger cover	1	
23	1000434037	Connector	1	
24	0000023679	Screw	2	M5x25
25	9000007785	Nut	4	M6

Fig.13 Battery assembly (EU)

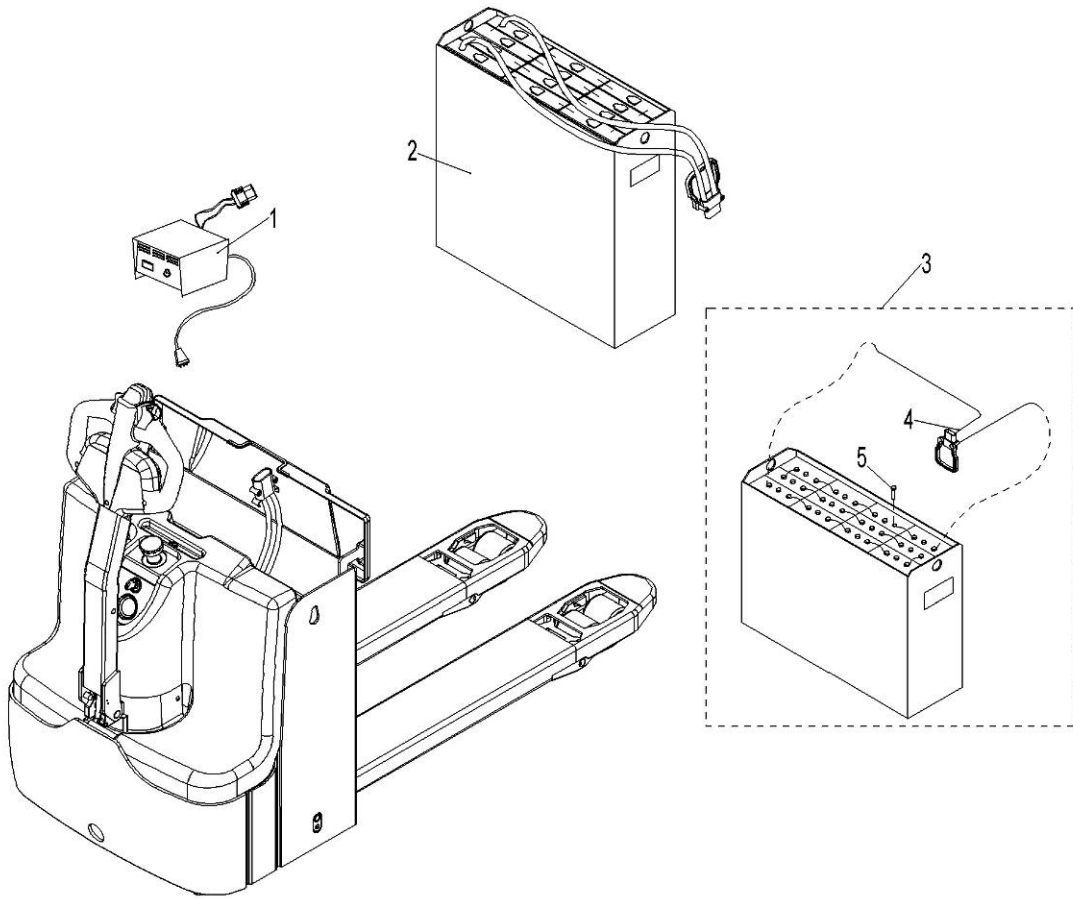


Fig.13 Battery Assembly (EU)

No.	Art No.	Description	Qty.	Note
1	9000010002	Charger (Asia in Chinese)	1	24V/25A
	9000010003	Charger (Asia in English)	1	24V/25A
	9000010004	Charger (EU)	1	24V/25A
	9000010005	Charger (AUS)	1	24V/25A
	9000010006	Charger (EU)	1	24V/25A
	9000010007	Charger (US)	1	24V/25A
2	9000010683	Power supply	1	Bolt type
3	9000010682	Power supply	1	Weld type
4	9000010684	Plug assembly	1	Only bolt type
5	9000009832	Screw	24	Only bolt type

Fig.14 Handle assembly

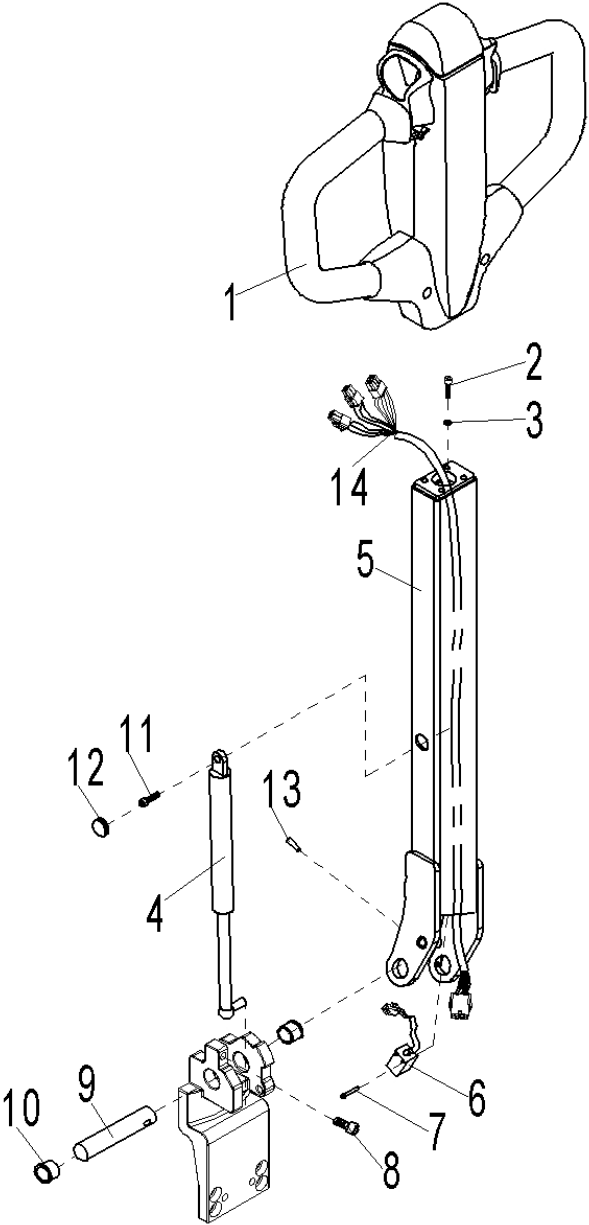


Fig.14 Handle Assembly

No.	Art No.	Description	Qty.	Note
1	504511010001	Handle	1	
2	0000023061	Screw	4	M8×25
3	0000025004	Washer	4	8
4	9000007398	Washer	1	
5	9000001929	Handle lever	1	
6	9000002428	Proximity switch	1	NBN5-FT-E2
7	0000023075	Screw	2	M3x20
8	0000023067	Screw	1	M8x16
9	9000005945	Rotating shaft	2	
10	0000013002	Bushing	2	20x22x12
11	1000123001	Screw	1	M8X20
12	9000010696	Seal bushing	1	
13	0000028163	Dowel pin	1	4x35
14	504533010001	Handle harness	1	

Fig.15 Handle head

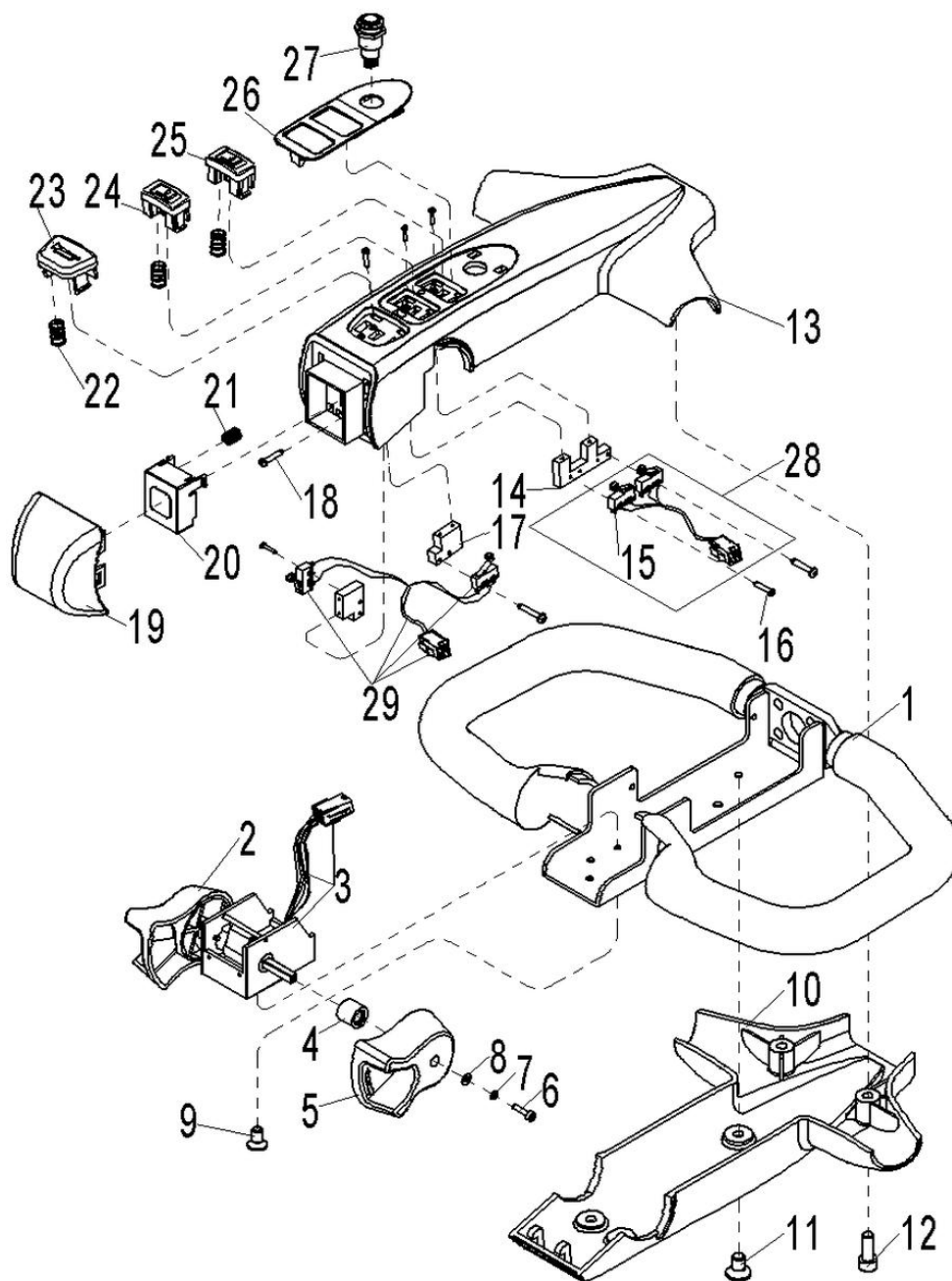


Fig.15 Handle Head

No.	Art No.	Description	Qty.	Note
1	9000002189	Handle seat	1	Rubber covered parts
2	9000002175	Left drive button	1	ABS
3	9000012014	Accelerator ET-191E	1	Optional
	921700100006	Accelerator BD-190	1	
4	9000002188	Bushing	2	ABS
5	9000002176	Right drive button	1	ABS
6	0000023304	Screw	2	M3×12
7	0000025003	Washer	2	3
8	0000025026	Washer	2	3
9	0090000189	Screw	3	M4×8
10	9000002179	Handle cover	1	ABS
11	0000023138	Screw	4	M6×10
12	0000023040	Screw	2	M6×16
13	504511020002	Handle cover	1	ABS
14	9000002311	Micro switch fixing parts	1	ABS
15	9000002161	Micro switch	4	SS-5GL2
16	0090000261	Screw	14	M2.2×13
17	9000002310	Micro switch fixing parts	2	ABS
18	0090000262	Screw	7	ST2.2 × 9.5
19	9000002180	Switch seat	1	ABS
20	9000002181	Switch seat	1	ABS
21	9000002182	Spring	4	0.8
22	9000002186	Spring	6	0.5
23	9000002183	Horn button	1	ABS
24	9000002184	Lifting button	1	ABS
25	9000002185	Lowering button	1	ABS
26	504511020001	Label	1	ABS
27	504533010017	Slower speed button	1	
28	9000002473	Micro switch assembly 2	1	
29	9000002190	Micro switch assembly 1	1	

Fig.16 Hydraulic assembly

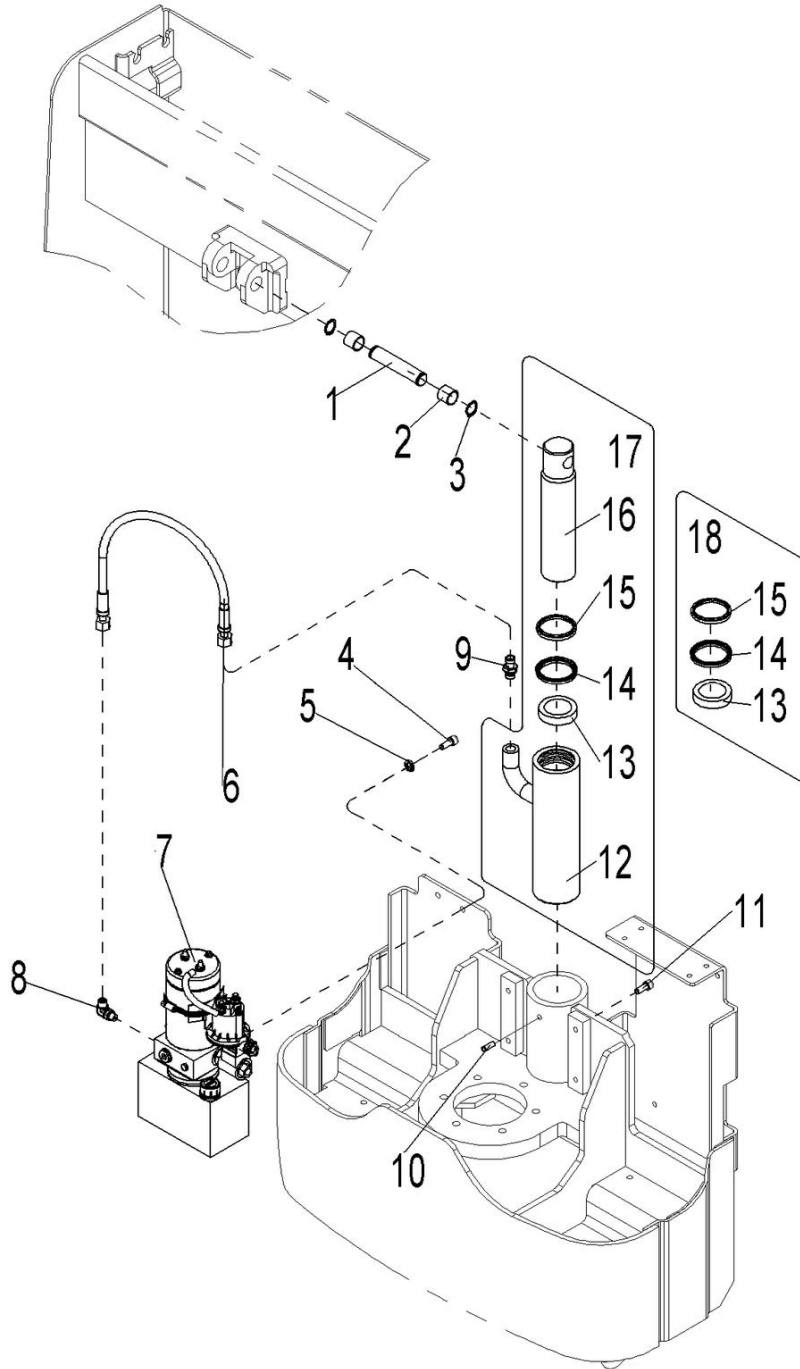


Fig.16 Hydraulic Assembly

No.	Art No.	Description	Qty.	Note
1	1020407001	Pin roll	1	
2	0000013001	Bushing	2	20×23×20
3	0000026003	Circlip	2	20
4	0000023067	Screw	2	M8x16
5	0000025001	Washer	2	8
6	9000016030	Hydraulic hose assembly	1	
7	9000016029	DC Hydraulic power unit	1	
8	9000007835	G steering joint	1	
9	9000007843	Joint	1	
10	0090000460	Screw	1	M8x10
11	0000023034	Screw	1	M10x20
12	9000016031	Cylinder body	1	
13	9000010699	Support ring	1	50X55X15
14	9000010700	Y seal ring	1	50X60X6/7
15	9000010701	Dust ring	1	50X58X5/6.5
16	9000016032	Piston rod	1	
17	9000016033	Cylinder assembly	1	
18	9000010704	Seal kits	1	

Fig.17 Pump

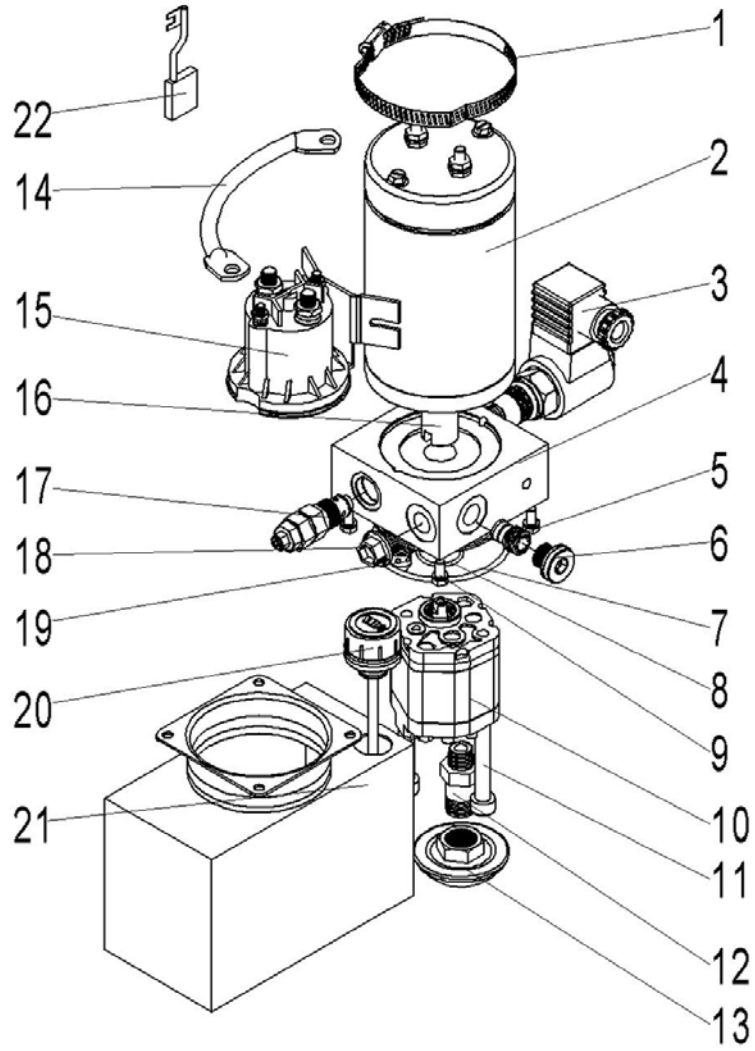


Fig.17 Pump

No.	Art No.	Description	Qty.	Note
1	9000010899	Hoop	1	
2	9000016034	Motor	1	
3	9000010898	Magnet valve	1	
4	9000016035	Valve	1	
5	9000010897	Check valve	1	
6	9000016036	Plug	2	
7	9000016037	O ring	1	69x2.65
8	9000016038	O ring	1	21.2x1.8
9	9000016039	Bolt	4	
10	9000010894	Gear pump	1	
11	9000016040	Bolt	2	
12	9000016041	Oil suction pipe	1	
13	9000016042	Filter screen	1	
14	9000016043	Connecting cable	1	
15	9000010208	Starting switch	1	
16	9000016044	Coupler	1	
17	9000016045	Overflow valve	1	
18	9000010896	Plug	1	
19	9000010886	Compensation valve	1	
20	9000010893	Cylinder cover	1	
21	9000016046	Cylinder	1	
22	504598510006	Carbon brush assembly	1	

Fig.18 Electrical assembly

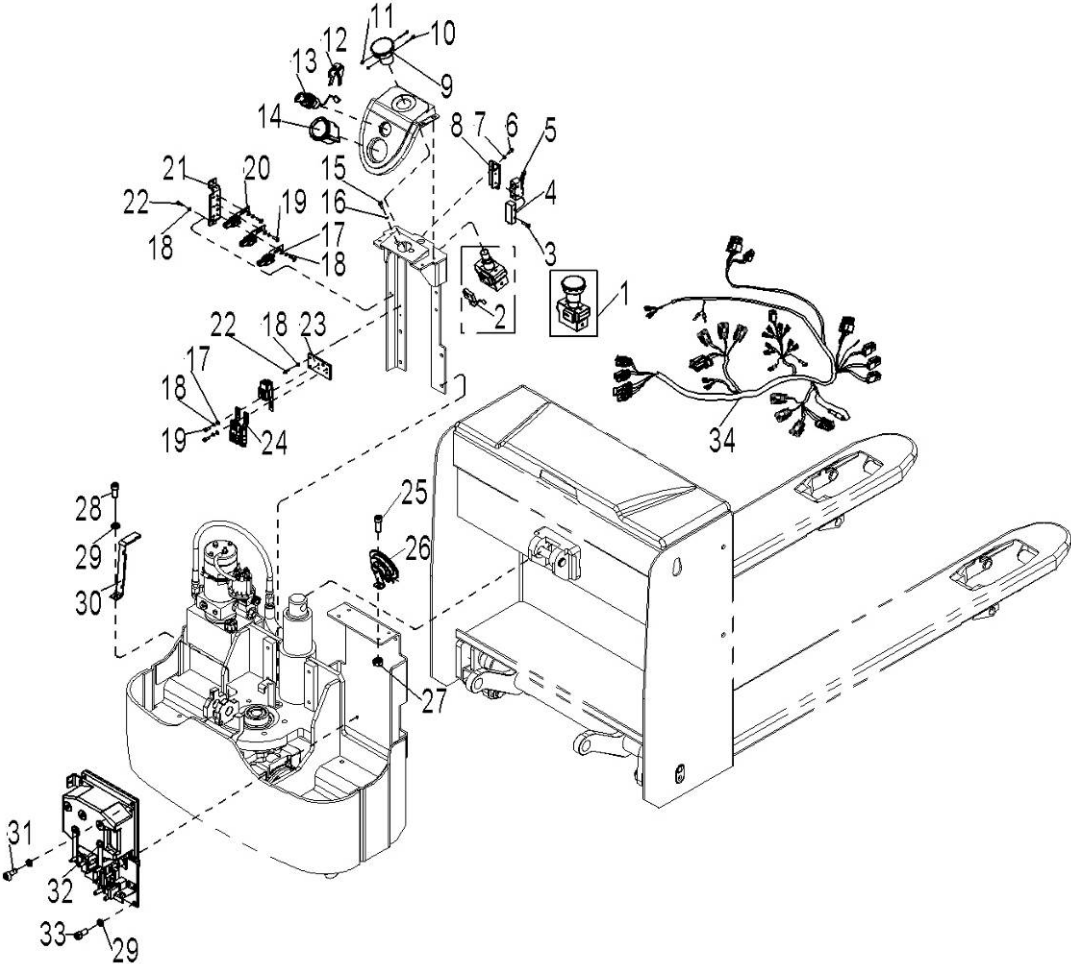


Fig.18 Electrical Assembly

No.	Art No.	Description	Qty.	Note
1	9000008515	DC Power switch	1	ZDK32-350
2	9000008517	Micro switch	1	ZDK32-350
3	0000023043	Screw	2	M4x25
4	2040603002	Micro switch protection cover	1	
5	9000000794	Micro switch	1	RZ-15GW2S-B3
6	0000023053	Screw	2	M6x12
7	0000025006	Washer	3	6
8	9000010710	Assembly plate	1	
9	9000008516	Button	1	ZDK32-350
10	0000023685	Screw	2	M3x25
11	0000024002	Nut	2	M3
12	9000008519	Key	1	LKS-101A key
13	9000008326	Key switch	1	LKS-101A
14	9000016582	Indicator	1	52DS803A
15	0000023107	Screw	2	M5x16
16	0000025015	Washer	2	5
17	0000025019	Washer	14	4
18	0000025018	Washer	14	4
19	0000023016	Screw	10	M4x12
20	1000204002	AMP two core connector seat	5	
21	9000010711	Bended plate	1	
22	0000023056	Screw	4	M4x12
23	9000010712	Transition plate	1	
24	9000007981	Connector seat	3	
25	0000023020	Screw	1	M6x20
26	1000434015	Horn	1	DC24V
27	0000024025	Nut	1	M6
28	0000023067	Screw	1	M8x16
29	0000025001	Washer	5	8

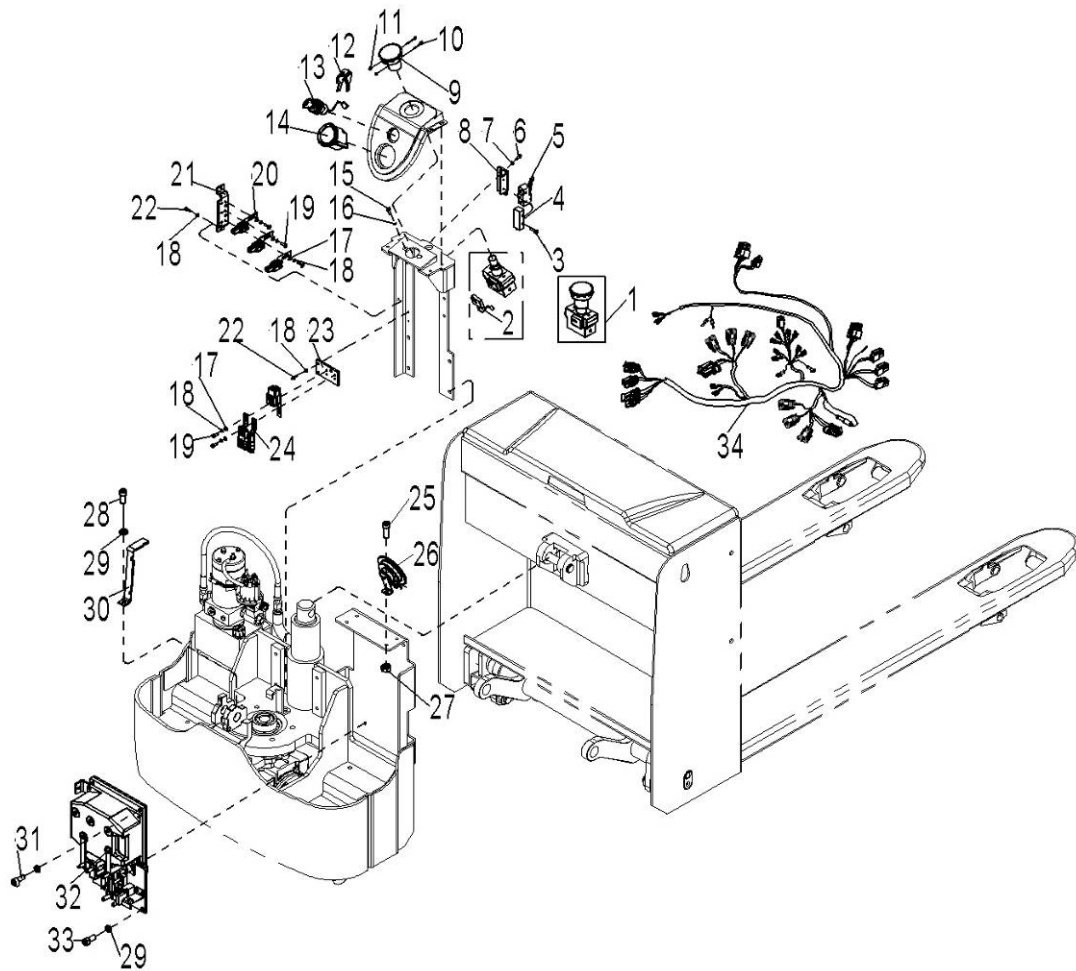


Fig.18 Electrical Assembly

No.	Art No.	Description	Qty.	Note
30	9000010714	Cable seat	1	
31	0000023172	Screw	2	M8x30
32	504533010013	Controller assembly	1	
33	0000023047	Screw	2	M8x25
34	504533010000	Control harness	1	

Fig.19 Controller assembly

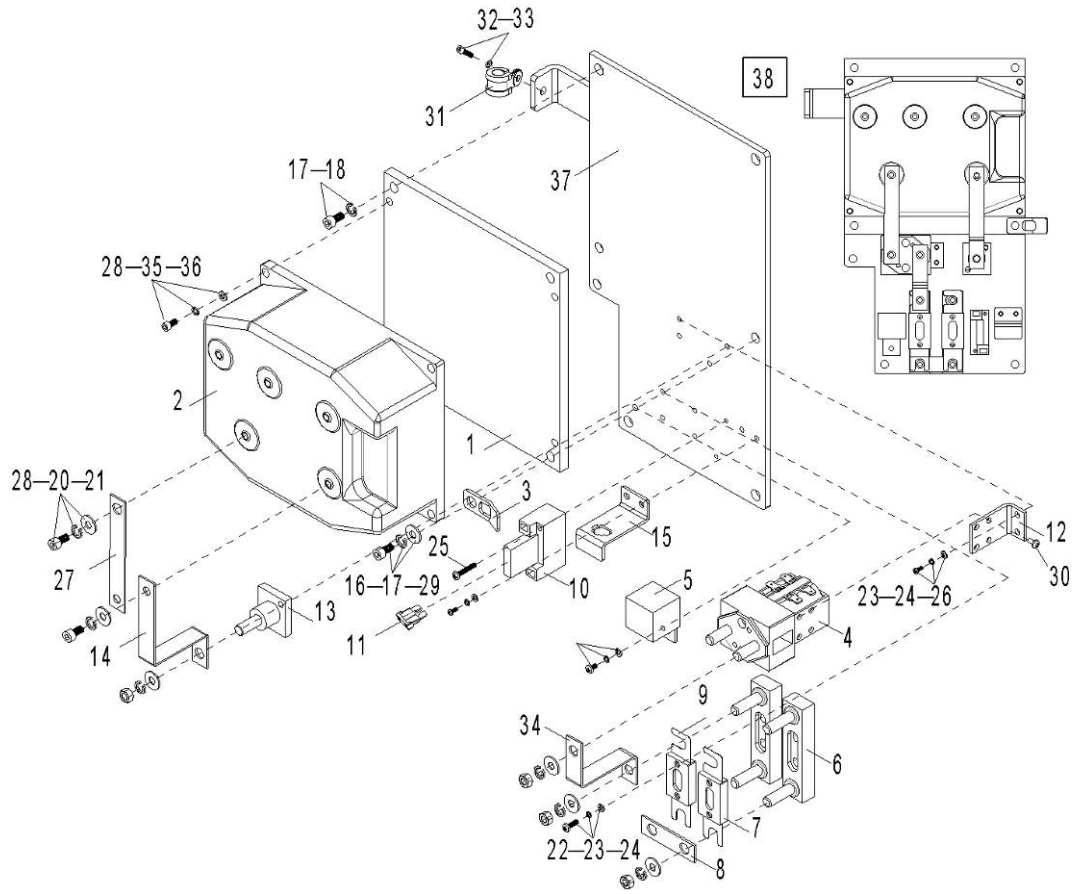


Fig.19 Controller Assembly

No.	Art No.	Description	Qty.	Note
1	9000008376	Aluminium plate	1	
2	9000016581	Controller 1232-2211	1	US
	921400100006	Controller 1232E-212	1	EU
3	9000009791	Line hanging board	1	
4	1000434006	Contactora	1	C100/120 DC24V
5	1000434041	Pump contactora	1	ACR01F-F-1C DC24V
6	1000434007	Fuse seat	2	SY Y
7	1010434005	Fuse	1	80A
8	9000010643	Copper bar	1	
9	2210434004	Fuse	1	150A
10	1000434021	Fuse seat	1	BD-1X10A
11	1000434040	Fuse	2	10A
12	9000008598	Fixing frame	1	
13	1020434002	Binding post	1	BD-M8
14	9000008373	Copper bar	1	
15	9000007679	Fixing frame	1	
16	0000025005	Washer	1	8
17	0000025004	Washer	2	8
18	0000023013	Screw	1	M8x16
19	0000023516	Screw	1	M5x10
20	0000025012	Washer	1	5
21	0000023032	Washer	1	5
22	0000023211	Screw	4	M4x16
23	0000025018	Washer	10	4
24	0000025019	Washer	10	4
25	0000023070	Screw	2	M3x25
26	0000023307	Screw	6	M4x10

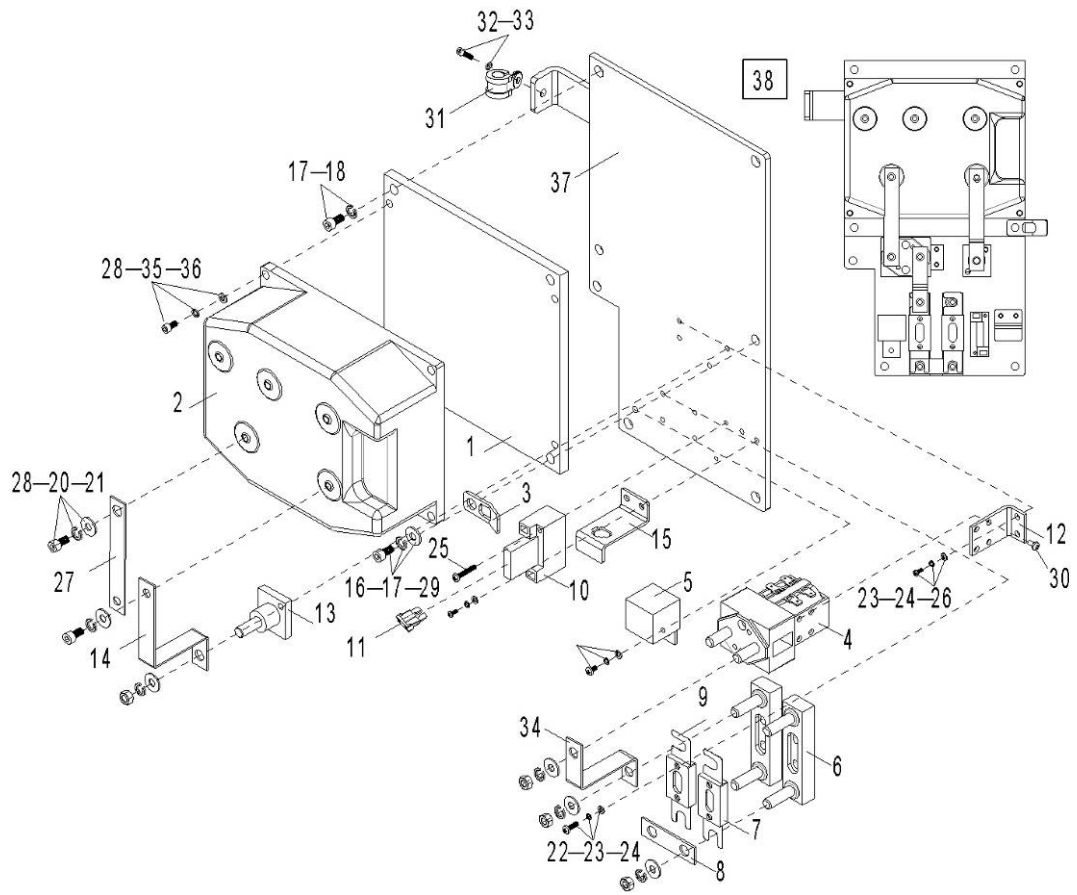


Fig.19 Controller Assembly

No.	Art No.	Description	Qty.	Note
27	9000008373	Copper bar	1	
28	0000023923	Screw	4	M6x18
29	0000023166	Screw	1	M8x20
30	0000023017	Screw	2	M4x5
31	9000008325	Rubber covered pipe clamp	1	
32	0000023040	Screw	1	M6x16
33	0000023055	Washer	1	6
34	9000008372	Copper bar	1	
35	0000025006	Washer	4	6
36	0000025007	Washer	4	6
37	9000010713	Fixing plate	1	

Fig.20 Main harness (US)

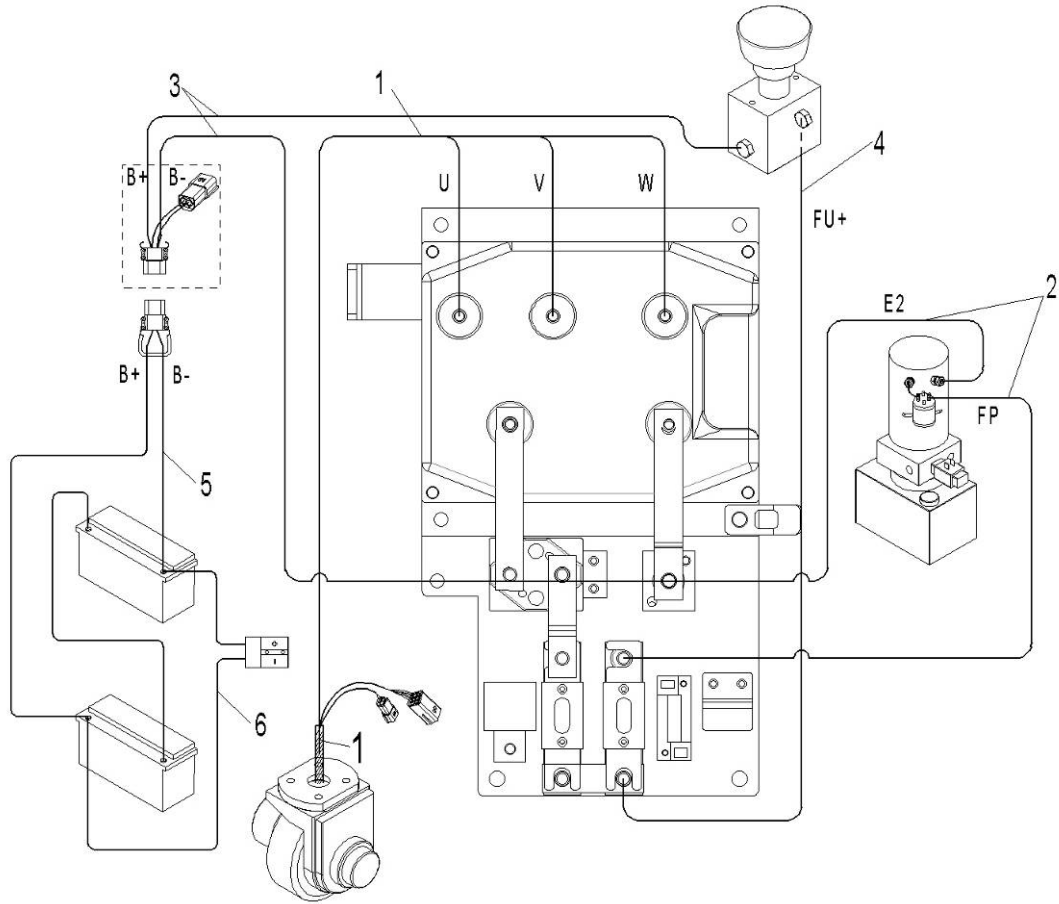


Fig.20 Main Harness (US)

No.	Art No.	Description	Qty.	Note
1	504533010007	Drive motor harness	1	
2	504533010004	Pump motor harness	1	
3	504533010008	Power supply harness	1	
4	504533010009	FU+ harness	1	
5	504533010011	Battery supply harness	1	
6	504533010012	Charger harness	1	

Fig.21 Main harness (EU)

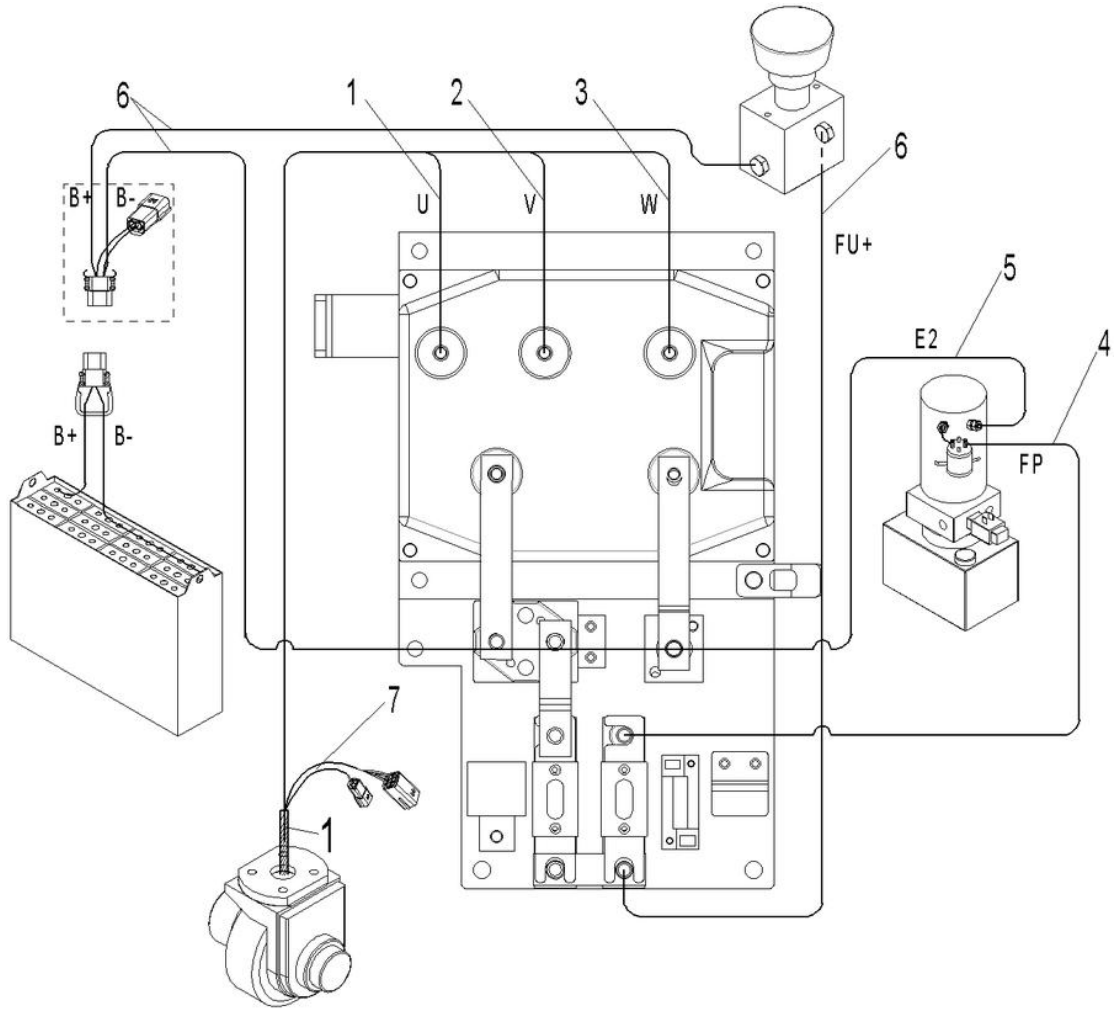


Fig.21 Main Harness (EU)

No.	Art No.	Description	Qty.	Note
1	504533010002	Cable-U-10-6-6-650	1	
2	504533010003	Cable -V-10-6-6-680	1	
3	504533010004	Cable -W-10-6-6-710	1	
4	504533010006	Cable -FP-10-8-8-1060	1	
5	504533010006	Cable -E2-10-6-8-1000	1	
6	504533010009	Cable -FU+-16-8-8-930	1	
7	504533010016	Drive motor control harness(CURTIS1232E)	1	

Fig.22 Label (EU)

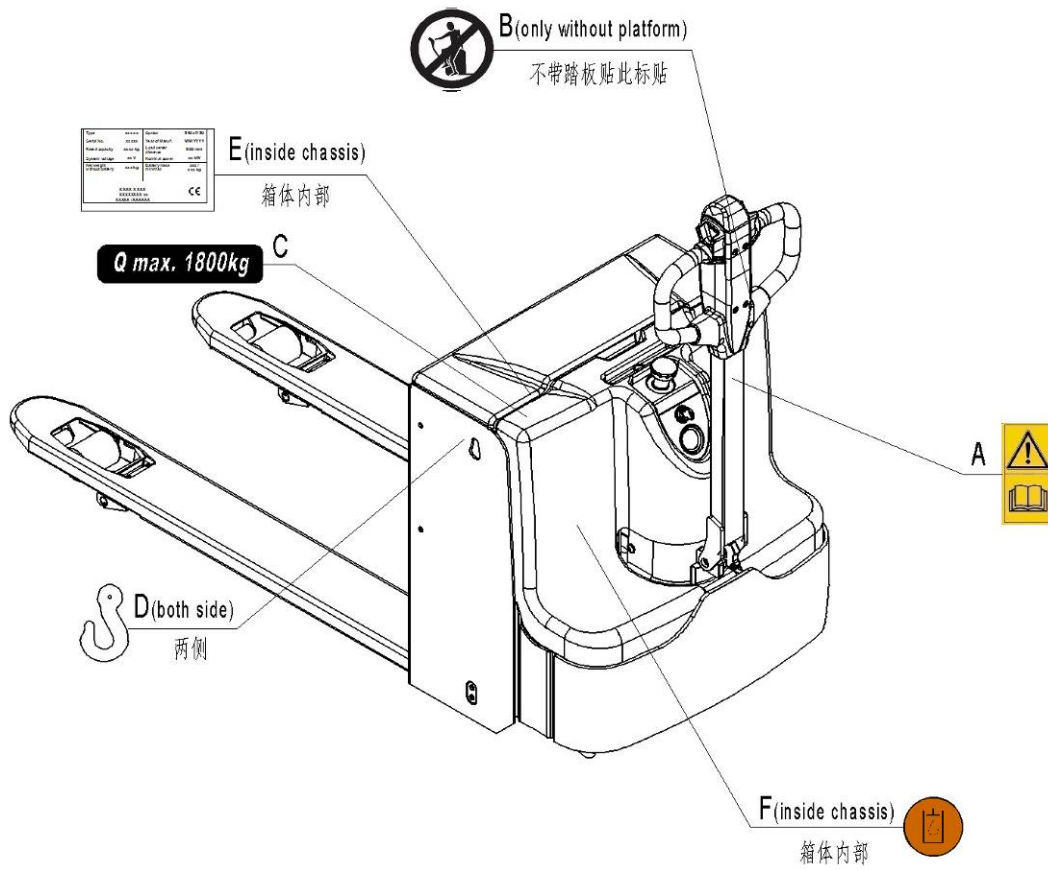


Fig.22 Label (EU)

No.	Art No.	Description	Qty.	Note
A	9000003570	Sign read and follow this	1	
B	9000003573	'No passengers' decal	1	
C	9000008548	Sign capacity sticker(1800 kg)	1	
D	9000005967	Hook sticker	2	
E	504547020002	CE sticker	1	
F	9000008555	Filling sticker	1	

Fig.23 Label (US)

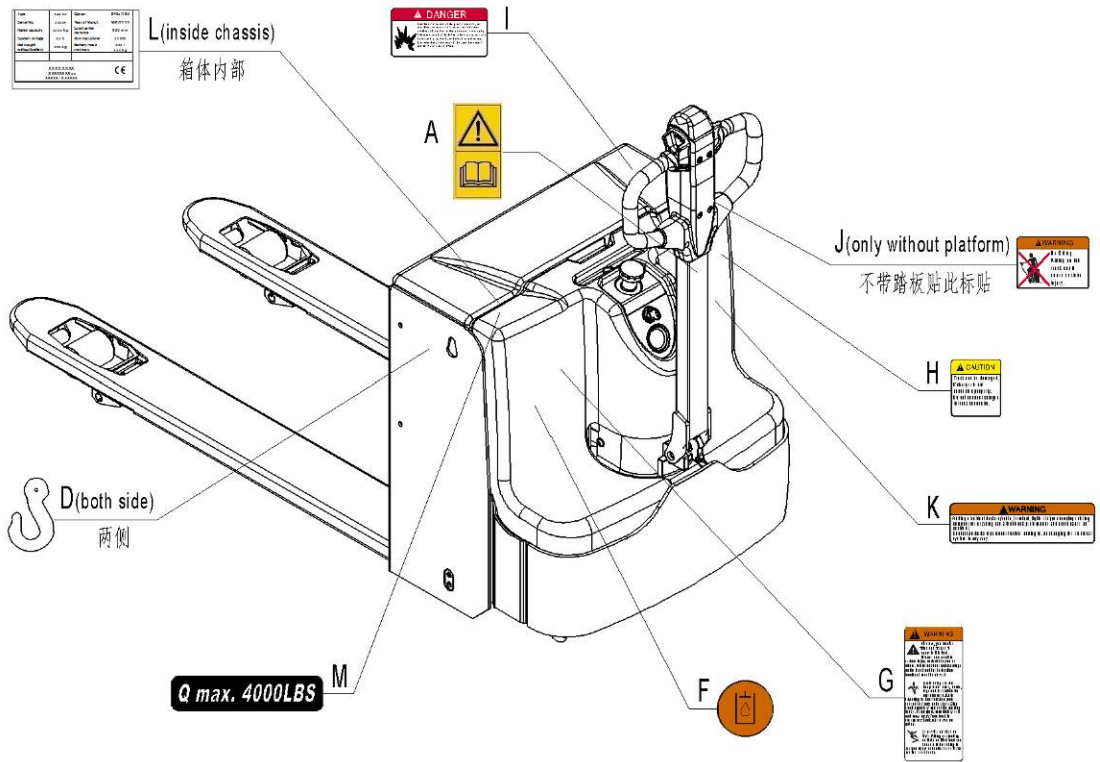


Fig.23 Label (US)

No.	Art No.	Description	Qty.	Note
A	9000003570	Sticker to read and follow these	1	
M	9000009404	Capacity sticker (4000 LBS)	1	
D	9000005967	Crane hook label	2	
F	9000008555	Filling sticker	1	
G	9000003575	Warning sticker	1	
H	9000003576	Warning sticker	1	
I	9000003577	Warning sticker	1	
J	9000003580	Warning sticker	1	
K	9000003579	Warning sticker	1	
L	504547020001	CE sticker	1	

Easy worn parts list

No.	Art No.	Description	Qty.	Fig./Position	Note
1	0000013024	Bushing 25x28x20	2	Fig.3/6	Fork frame(US)
2	0000013001	Bushing 20x23x20	2	Fig.3/7	
3	0000027006	Bushing 25x29x25	2	Fig.3/8	
4	0000027005	Bushing 20x22x12	4	Fig.3/14	
5	0000030001	Grease nipple 6	2	Fig.3/17	
6	0000013024	Bushing 25x28x20	2	Fig.4/6	Fork frame(EU)
7	0000013001	Bushing 20x23x20	2	Fig.4/7	
8	0000027006	Bushing 25x29x25	2	Fig.4/8	
9	0000027005	Bushing 20x22x12	4	Fig.4/14	
10	0000030001	Grease nipple 6	2	Fig.4/17	
11	504538520000	Pulley	6	Fig.5/2	Load wheel(US)
12	1500302005	Pulley	4	Fig.5/6	
13	0000030002	Grease nipple	2	Fig.5/7	
14	9000016570	Bushing	4	Fig.5/8	
15	9000014899	Load roller	2	Fig.5/10	
16	0000027001	Bearing	4	Fig.5/11	
17	1000516001	Entry roller	2	Fig.6/2	Load wheel(EU)
18	0000027005	Bushing 20x22x12	4	Fig.6/7	
19	0000027001	Bearing 6204	8/4(D/S)	Fig.6/10	
20	9000008791	Load wheel 84x84	4(D)	Fig.6/11	
21	9000007766	Load wheel 82x110	2(S)	Fig.6/15	
22	9000002333	Bushing 18x20x12	4(D)	Fig.6/16	
23	0000027002	Bearing	2	Fig.9/2	Steering wheel assembly
24	1000419001	Spring	2	Fig.9/8	
25	1000413002	Bushing 12x15x15	4	Fig.9/9	
26	0000027001	Bearing 6204	4	Fig.9/15	
27	1000403008	Balance wheel 100X40	2	Fig.9/16	

28	0090000038	Bearing 32011	1	Fig.10/4	Drive assembly
29	0000027048	Bearing 6209	1	Fig.10/12	
30	9000001928	Air spring	1	Fig.14/4	Handle
31	9000002428	Proximity switch	1	Fig.14/6	
32	0000013002	Bushing 20X22X12	2	Fig.14/10	
33	9000010696	Seal bushing	1	Fig.14/12	
34	9000010699	Support ring 50X55X15	1	Fig.16/12	Hydraulic assembly
35	9000010700	Y seal ring	1	Fig.16/13	
36	9000010701	Dust ring 50X58X5	1	Fig.16/14	
37	9000000794	Micro switch	1	Fig.18/5	Electrical assembly
38	1010434005	Fuse 80A	1	Fig.19/7	Controller assembly
39	2210434004	Fuse 150A	1	Fig.19/9	
40	1000434040	Fuse 10A	2	Fig.19/11	