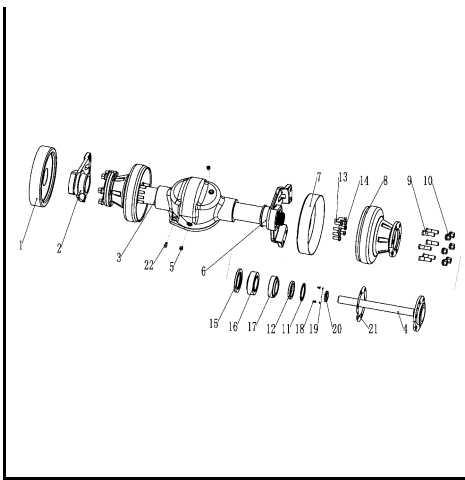


驱动系统/Drive system					
序号/NO	编码/SN	Name	名称	数量/QTY	备注/Remarks
1	255013510001	Drive axle(DW)	驱动桥(DW)	1	
	255013510002	Drive axle(KD)	驱动桥(KD)		
2	255013520003	Adjusting shim 1	调整垫片1	1	
3	255013520002	Nut M20x1.5	螺母M20x1.5	8	
4	910600100021	Dowel pin GB119.2-8x25	圆柱销GB119.2-8x25		
5	910400100007	Washer GB97.1-10-200HV	平垫圈GB97.1-10-200HV	12	
6	910400500007	Washer GB93-10	弹簧垫圈GB93-10	12	
7	910100400004	Bolt GB5786-M10x1.25x30-8.8	螺栓GB5786-M10x1.25x30-8.8	12	
8	910300900002	Nut GB6178-M20-8	螺母GB6178-M20-8	1	
9	910400100009	Washer GB97.1-14-200HV	平垫圈GB97.1-14-200HV	5	
10	910400500009	Washer GB93-14	弹簧垫圈GB93-14	5	
11	910100200010	Bolt GB5785-M14x1.5x50-8.8	螺栓GB5785-M14x1.5x50-8.8	5	
12	910600600037	Split pin GB91-4x40	开口销GB91-4x40	1	
13	910400500012	Washer GB93-20	弹簧垫圈GB93-20	9	
14	910400100012	Washer GB97.1-20-200HV	平垫圈GB97.1-20-200HV	1	
15	910100500006	Bolt GB31.1-M20x90-8.8	螺栓GB31.1-M20x90-8.8	1	
16	910800100020	O ring 90x2.65	O形圈-内90x2.65	1	
17	920900100037	Motor (HP)	电机(HP)	1	选装/Optional
	920900100034	Motor (WN)	电机(WN)	1	选装/Optional
18	255014010002	Gear box (ZN)	变速箱(ZN)	1	选装/Optional
	255014012002	Gear box(JD)	减速箱总成(JD)	1	选装/Optional
19	255013520005	Seal washer	密封垫	1	
20	255013520001	Bolt M20x1.5x66	螺栓M20x1.5x66	1	
21	255013520004	Adjusting washer 2	调整垫片2	1	
	255098513251	Encoder (HP)	编码器(HP)	1	选装/Optional
22	255098513253	Encoder (WN)	编码器(WN)	1	选装/Optional

驱动桥(DW)/Drive axle(DW)					
序号/NO	编码/SN	Name	名称	数量/QTY	备注/Remarks
1	255098513501	Left brake assembly	左制动器总成	1	
2	255098523502	Drive axle left bearing plate	驱动桥左支承板	1	
3	255098523503	Air hole assembly	通气孔总成	1	
4	255098523504	Blocking	堵塞	1	
5	255098523505	New drive axle housing	新驱动桥壳	1	
6	255098523506	Oil seal SD45x62x12	油封SD45x62x12	2	
7	255098523507	Drive axle right bearing plate	驱动桥右支承板	1	
8	255098513508	Right brake assembly	右制动器总成	1	
9	255098523509	Spring washer 14	弹簧14	16	
10	255098523510	Brake bolt	制动器螺栓	4	
11	255098523511	Brake bolt	制动器螺栓	12	
12	255098523512	Oil seal SD100x140x12	油封SD100x140x12	2	
13	255098023513	Bearing 30615	轴承30615	2	
14	255098523514	Bearing33115	轴承33115	2	
15	255098523515	Nut seat	螺母座	2	
16	255098523516	Nut seat circlip	螺母座挡圈	2	
17	255098523517	Spring washer 6	弹簧6	4	
18	255098523518	Bolt M6x12-4.8	螺栓M6x12-4.8	4	
19	255098523519	Hub	轮毂	2	
20	255098523520	Hub connecting bolt	轮毂连接螺栓	12	
21	255098523521	Half shaft seal washer	半轴(新)密封垫	2	
22	255098523522	Half shaft	半轴	2	
23	255098523523	Rim nut	轮辋螺母	12	

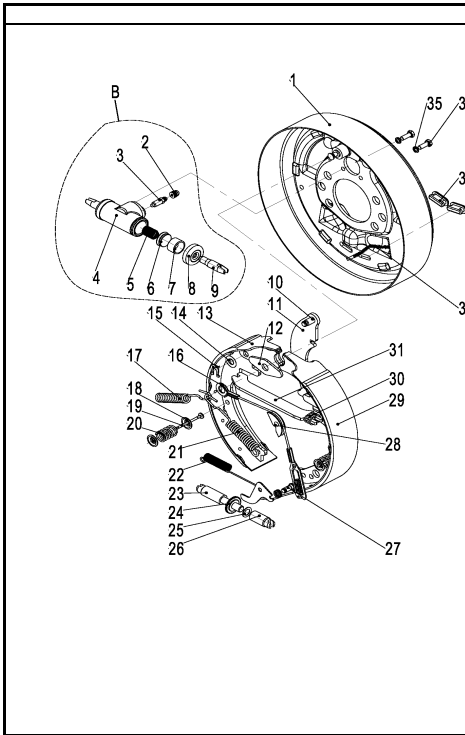
制动器总成(DW)/Brake assembly (DW)					
序号/NO	编码/SN	Name	名称	数量/QTY	备注/Remark
1	▲	Back plate assy	左制动器底板	2	
1	▲	R.H.back plate	右制动器底板	1	
B	255098513505	Wheel cylinder assy	制动器分泵总成	2	
2	▲	Hood drain screw	分泵排气螺钉罩	2	
3	▲	Screw,vent	分泵排气螺钉	2	
4	▲	Cylinder body	制动分泵缸体	2	
5	▲	Spring	分泵弹簧	2	
6	▲	Cup	分泵皮碗	2	
7	▲	Piston	分泵活塞	2	
8	▲	Support hood	分泵护罩	2	
9	▲	Rod piston	分泵活塞顶杆	2	
10	▲	Pin	销钉	2	
11	▲	Pull rod	手动制动拉杆	2	
12	▲	Heel block	垫块	2	
13	255098513509	Brake shoe & friction piece	制动蹄带摩擦片总成(前)	2	
14	▲	Washer	垫圈	2	
15	▲	Clip reed	卡簧	1	
16	▲	Wire unit.spring	弹簧线装置	2	
17	▲	Release spring	制动蹄左回位弹簧	2	
18	▲	Washer	垫圈	2	
19	▲	Seat.spring	弹簧座	2	
20	▲	Spring	弹簧	2	
21	▲	Return spring	制动蹄右回位弹簧	2	
22	▲	Spring	弹簧	2	
23	▲	Clearance adjuster	间隙调整器	2	
24	▲	pinion	小齿轮	2	
25	▲	Washer	垫圈	2	
26	▲	Adjust the stud	调整螺栓	2	
27	▲	pin	定位销	2	
28	▲	Guide block	导向块	2	
29	255098513510	Brake shoe & friction piece	制动蹄带摩擦片总成(后)	2	
30	▲	Protective sleeve	保护套	4	
31	▲	poles	支撑杆	4	
32	255098513503	Cable,R.H.	制动钢索总成(右)	1	
32	255098513504	Cable,L.H.	制动钢索总成(左)	1	
33	▲	Plug,rubber	保护套	2	
34	▲	Spring washer	弹簧垫圈	2	
35	▲	Bolt	螺栓	2	

驱动桥(KD)/Drive axle(KD)					
序号/NO	编码/SN	Name	名称	数量/QTY	备注/Remarks



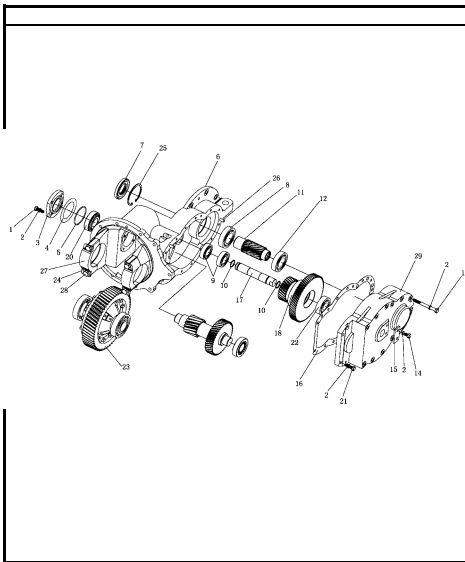
1	255098513540	Left brake assembly	左制动器总成	1	
2	255098513541	Drive axle left bearing plate	左扇形板	1	
3	255098513542	New drive axle housing	桥壳	1	
4	255098513543	Half shaft	半轴	2	
5	254198523544	Blocking	堵塞	1	
6	255098523544	Drive axle right bearing plate	右扇形板	1	
7	255098523545	Right brake assembly	右制动器总成	1	
8	255098523546	Hub	轮毂	2	
9	255098523547	Hub connecting bolt	轮毂螺栓	12	
10	255098523548	Rim nut	轮辋螺母	12	
11	255098523549	Lock washer	止动垫圈	2	
12	255098523550	Locknut	锁紧螺母	2	
13	254198523562	Brake bolt	铰制螺栓	4	
14	255098523551	Bolt M14X1.5X35	螺栓M14X1.5X35	12	
15	255098523552	Oil seal TC100x140x12	油封TC100x140x12	2	
16	255098523553	Bearing 30615	圆锥滚子轴承30615	2	
17	255098523554	Bearing33115	圆锥滚子轴承33115	2	
18	255098523555	Bolt M6x12	螺栓M6x12	4	
19	255098523556	Spring washer 6	弹垫6	4	
20	255098523557	Oil seal TC45x62x12	油封TC45x62x12	2	
21	255098523558	Half shaft seal washer	半轴纸垫	2	
22	254198523543	Air hole assembly	透气塞	1	

制动器总成(KD)/Brake assembly (KD)



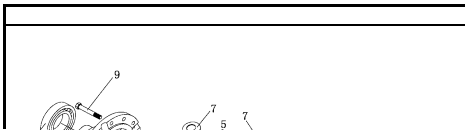
序号/NO	编码/SN	Name	名称	数量/QTY	备注/Remark
1	▲	Back plate assy	左制动器底板	2	
1	▲	R.H.back plate	右制动器底板	1	
B	255098523544	Wheel cylinder assy	制动器分泵总成	2	
2	▲	Hood,drain screw	分泵排气螺钉罩	2	
3	▲	Screw,vent	分泵排气螺钉	2	
4	▲	Cylinder body	制动分泵缸体	2	
5	▲	Spring	分泵弹簧	2	
6	▲	Cup	分泵皮碗	2	
7	▲	Piston	分泵活塞	2	
8	▲	Support hood	分泵护罩	2	
9	▲	Rod,piston	分泵活塞顶杆	2	
10	▲	Pin	销钉	2	
11	▲	Pull rod	手动制动拉杆	2	
12	▲	Heel block	垫块	2	
13	255098523545	Brake shoe & friction piece	制动蹄带摩擦片总成(前)	2	
14	▲	Washer	垫圈	2	
15	▲	Clip reed	卡簧	1	
16	▲	Wire unit,spring	弹簧线装置	2	
17	▲	Release spring	制动蹄左回位弹簧	2	
18	▲	Washer	垫圈	2	
19	▲	Seat,spring	弹簧座	2	
20	▲	Spring	弹簧	2	
21	▲	Return spring	制动蹄右回位弹簧	2	
22	▲	Spring	弹簧	2	
23	▲	Clearance adjuster	间隙调整器	2	
24	▲	pinion	小齿轮	2	
25	▲	Washer	垫圈	2	
26	▲	Adjust the stud	调整螺栓	2	
27	▲	pin	定位销	2	
28	▲	Guide block	导向块	2	
29	255098523546	Brake shoe & friction piece	制动蹄带摩擦片总成(后)	2	
30	▲	Protective sleeve	保护套	4	
31	▲	poles	支撑杆	4	
32	255098523547	Cable,R.H.	制动钢索总成(右)	1	
32	255098523548	Cable,L.H.	制动钢索总成(左)	1	
33	▲	Plug,rubber	保护套	2	
34	▲	Spring washer	弹簧垫圈	2	
35	▲	Bolt	螺栓	2	

255014010002 变速箱 (ZN) /Gear box(ZN)



序号/NO	编码/SN	Name	名称	数量/QTY	备注/Remark
1	910100300036	Bolt	螺栓M10X25	4	
2	910400500007	Spring washer	弹簧垫圈10	20	
3	255098524003	Bearing cap	轴承盖	1	
4	255098524004	Spacer	垫片	4	
5	910800100032	O seal ring	O形密封圈75X3.1	1	
6	255098524006	Box	箱体	1	
7	255098524007	Oil seal	油封TC45X85X10	1	
8	910700200024	Bearing6209	深沟球轴承6209	1	
9	910700200021	Bearing6206	深沟球轴承6206	3	
10	255098524010	O ring	O形密封圈25X2.65	2	
11	255098524011	Input shaft assembly	输入轴组件	1	
12	910700200023	Bearing6208	深沟球轴承6208	1	
13	910100100125	Bolt M10X100	螺栓M10X100	12	
14	910100300034	Bolt M10X16	螺栓M10X16	2	
15	255098524017	Stop dog	挡块	1	
16	255098524019	Paper pad	纸垫	1	
17	255098524020	axle	轴	1	
18	255098524021	Gear	双联齿轮	1	
19	255098524022	Gear assembly	齿轮组件	1	
20	255098524023	Bearing32207	圆锥滚子轴承32207	2	
21	910100300038	Bolt M10X35	螺栓M10X35	2	
22	255098524042	Bearing 6306	深沟球轴承6306	1	
23	255098524043	Differential assembly	差速器总成	1	
24	255098524027	Locking plate	锁片	4	
25	255098524044	Hole with elastic retainer 85	孔用弹性挡圈85	1	
26	910600100013	Pin6X20	圆柱销6X20	2	
27	255098524025	Bearing seat	轴承座	2	
28	255098524026	Bolt	螺栓	4	
29	255098524018	Box cover	箱盖	1	

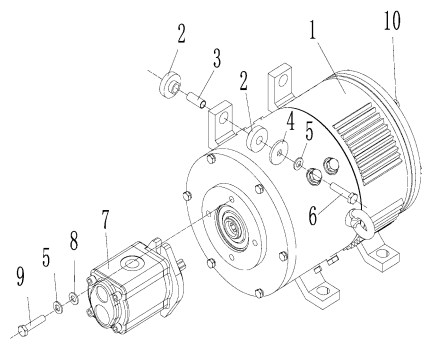
255014010002差速器 (ZN)/Differential mechanism (ZN)



序号/NO	编码/SN	Name	名称	数量/QTY	备注/Remark
1	255098524024	Left differential carrier	差速器壳组件	1	
2	255098524028	Gear	半轴齿轮	2	
3	255098524029	Axle	十字轴	1	
4	255098524030	Washer	垫圈	2	
5	255098524032	Gear	行星齿轮	4	

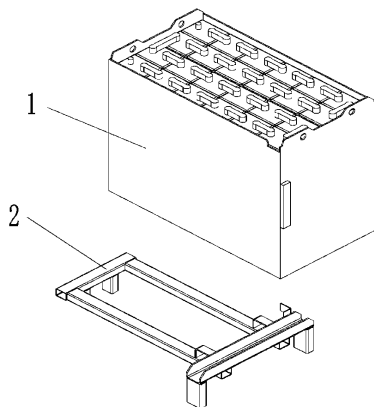


起升电机及安装/Lifting motor and installation



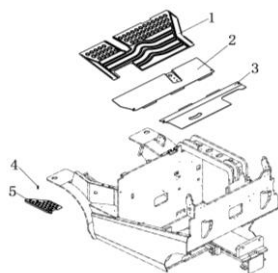
序号/NO	编码/SN	Name	名称	数量/QTY	备注/Remarks
1	920900100038	Motor(HP)	电机(HP)	1	选装/Optional
	920900100035	Motor(WN)	电机(WN)	1	选装/Optional
2	255032520003	Anti vibration pad	减振垫	8	
3	255032520001	Bushing	套	4	
4	255032520002	Washer φ40xφ11x4	垫圈 φ40x φ11x4	4	
5	910400500007	Washer GB93-10	弹簧垫圈GB93-10	6	
6	910100100034	BoltGB5782-M10x55-8.8	螺栓GB5782-M10x55-8.8	4	
7	255023510006	Gear pump	齿轮泵	1	
8	910400100007	Washer GB97.1-10-200HV	平垫圈GB97.1-10-200HV	2	
9	910100300039	Bolt GB5783-M10x40-8.8	螺栓GB5783-M10x40-8.8	2	
10	255098513251	Encoder (HP)	编码器 (HP)	1	选装/Optional
	255098513253	Encoder (WN)	编码器 (WN)	1	选装/Optional

蓄电池及托架/Battery and bracket



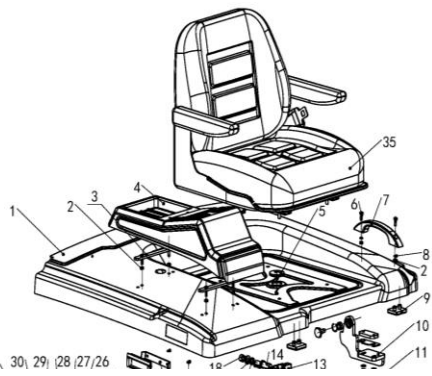
序号/NO	编码/SN	Name	名称	数量/QTY	备注/Remarks
1	255037010002	Battery (48V600Ah) (weld)	电池(48V600Ah)(焊)	1	焊接式/weld
	255037010004	Battery (48V630Ah) (weld)	电池(48V630Ah)(焊)	1	焊接式/weld
	255037010006	Battery (48V700Ah) (weld)	电池(48V700Ah)(焊)	1	焊接式/weld
	255037010014	Battery (48V770Ah) (weld)	电池(48V770Ah)(焊)	1	焊接式/weld
	255037010003	Battery (48V600Ah) (bolt)	电池(48V600Ah)(螺)	1	螺栓式/bolt
	255037010005	Battery (48V630Ah) (bolt)	电池(48V630Ah)(螺)	1	螺栓式/bolt
	255037010007	Battery (48V700Ah) (bolt)	电池(48V700Ah)(螺)	1	螺栓式/bolt
	255037010015	Battery (48V770Ah) (bolt)	电池(48V770Ah)(螺)	1	螺栓式/bolt
2	255012510001	Battery bracket welding	电池托架焊合	1	侧出专用

脚踏板/Foot pedal

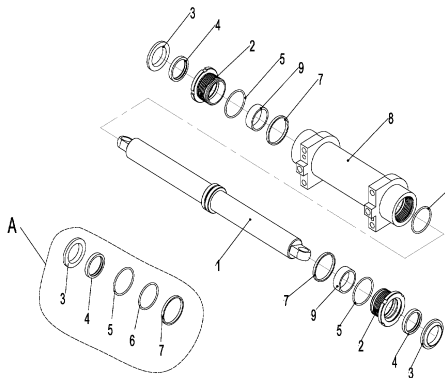


序号/NO	编码/SN	Name	名称	数量/QTY	备注/Remarks
1	255018020005	Cushion	地板垫	2	
2	255018010001	Floor welding (front)	地板焊合(前)	1	
3	255018010002	Floor welding (rear)	地板焊合(后)	1	
4	941100100001	Screw M8x12-8.8	螺钉M8x12-8.8	2	
5	255018020006	Foot pedal	上车脚踏板	1	

电瓶箱盖/Battery box cover

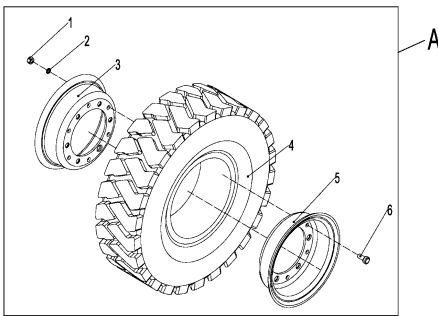


序号/NO	编码/SN	Name	名称	数量/QTY	备注/Remarks
1	255021010002	Battery box cover welding	电瓶箱盖焊合	1	
2	910300100005	Nut GB6170-M6-10	螺母GB6170-M6-10	8	
3	255021010016	Pressing plate weiding	压板焊合	2	
4	255021020003	Trim	装饰盖	1	
5	255021020046	Guard cicle φ35	保护圈 φ35	1	
6	910200500053	ScrewGB818-M6x20-4.8	螺钉GB818-M6x20-4.8	2	
7	255021020020	Handle	拉手	1	
8	910400500005	WasherGB93-6	弹簧垫圈GB93-6	4	
9	255021020068	Damping pad	缓冲垫	2	
10	255021010005	Hinge welding (left)	铰链焊合(左)	1	
11	910100300024	Bolt GB5783-M8x30-8.8	螺栓GB5783-M8x30-8.8	4	
12	910200500056	Screw GB818-M6x35-4.8	螺钉GB818-M6x35-4.8	2	
13	255021010010	Head cover lock	顶盖锁	1	
14	255021020052	Lock tongue 2	锁舌2	1	
15	910400100005	Washer GB97.1-6-200HV	平垫圈GB97.1-6-200HV	2	
16	910400500008	WasherGB93-12	弹簧垫圈GB93-12	1	
17	910400100008	WasherGB97.1-12-200HV	平垫圈GB97.1-12-200HV	1	
18	910300100008	Nut GB6170-M12-10	螺母GB6170-M12-10	1	
19	910200500021	Screw GB818-M4x10-4.8	螺钉GB818-M4x10-4.8	2	
20	255021020055	Fixing plate	固定板	1	
21	255021020021	Handle(inside)	拉手(内)	1	



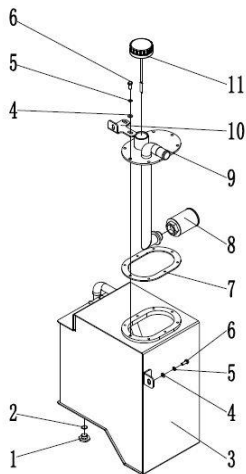
序号/NO	编码/SN	Name	名称	数量/QTY	备注/Remarks
A	255098511007	Sealing part maintenance package (sealing kit)	密封件修理包(转向缸-KD)	1	
1	▲	Piston rod assembly	活塞杆总成	1	
2	▲	Cylinder cover	缸盖	2	
3	▲	Dust ring DH50	防尘圈DH50	2	
4	▲	U ring UN50	U形圈UN50	2	
5	▲	O ring 63x3.55	O形圈63×3.55	2	
6	▲	O ring 60x3.55	O形圈60×3.55	1	
7	▲	Support ring	支承环	1	
8	▲	Cylinder assembly	缸筒总成	1	
9	▲	Bearing	钢背轴承	2	

转向车轮总成/Steering wheel assembly



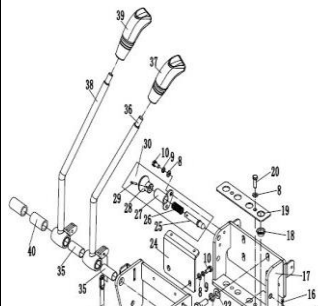
序号/NO	编码/SN	Name	名称	数量/QTY	备注/Remarks
A	255015510003	Steering wheel assembly 18x7-8 (pneumatic)	转向轮总成18x7-8-14PR(充气)	2	
	255015510004	Steering wheel assembly 18x7-8 (solid)	转向轮总成18x7-8(实心)	2	选装/Optional
	255015510005	Steering wheel assembly 18x7-8 (environment protection)	转向轮总成18x7-8(环保)	2	选装/Optional
1	910300100008	Nut GB6170-M12-10	螺母GB6170-M12-10	16	
2	910400500008	Washer GB93-12	弹簧垫圈GB93-12	16	
3	255015520002	Inner rim 4.33R	内轮圈4.33R	2	
	255015510001	Tyre (pneumatic)18x7-8-14PR	轮胎(充气)18x7-8-14PR	2	选装/Optional
	255015510002	Tyre (solid)18x7-8	轮胎(实心)18x7-8	2	选装/Optional
	255015510006	Tyre(environment)18x7-8	轮胎(环保)18x7-8	2	选装/Optional
5	255015520001	Outer rim 4.33R	外轮圈4.33R	2	
6	255013020001	Rim Bolt M12x26	轮钢螺栓M12x26	16	

工作油箱装置及安装/Working cylinder mechanism and installation

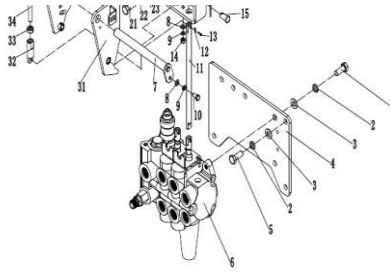


序号/NO	编码/SN	Name	名称	数量/QTY	备注/Remarks
1	255019020015	Drain plug M20x1.5	放油塞M20x1.5	1	
2	910800900001	Washer JB982-20	组合垫圈JB982-20	1	
3	255019010001	Cylinder welding	油箱焊合	1	
4	910400100006	Washer GB97.1-8-200HV	平垫圈GB97.1-8-200HV	10	
5	910400500006	Washer GB93-8	弹簧垫圈GB93-8	10	
6	910100300022	Bolt GB5783-M8x20-8.8	螺栓GB5783-M8x20-8.8	10	
7	255019020013	Sealing gasket	密封垫	1	
8	255019010004	Screen filter	网式过滤器	1	
9	255019010002	Cover plate welding	盖板焊合	1	
10	255019020012	Fixing plate 2	固定板2	1	
11	255019010003	Oil dipstick assembly	油尺塞总成	1	

多路换向阀操纵(二联)/ Multiple directional control valve (bigeminy)

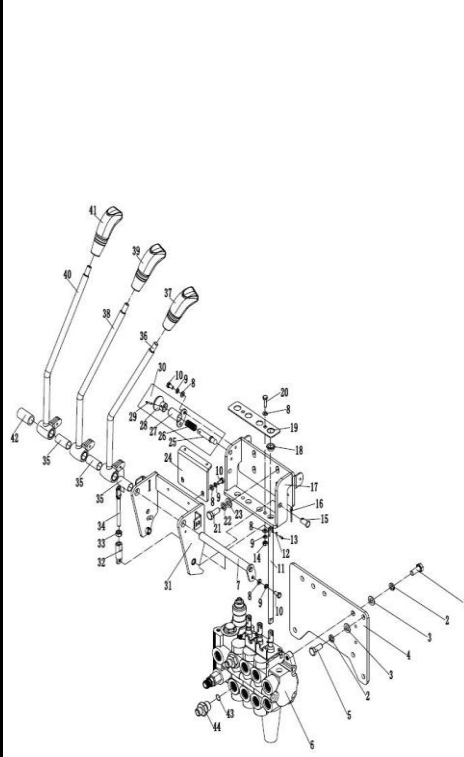


序号/NO	编码/SN	Name	名称	数量/QTY	备注/Remarks
1	910100400003	Bolt GB5786-M10x1.25x25-8.8	螺栓GB5786-M10x1.25x25-8.8	3	
2	910400500007	Washer GB93-10	弹簧垫圈GB93-10	6	
3	910400100007	Washer GB97.1-10-200HV	平垫圈GB97.1-10-200HV	6	
4	255024520024	Supporting plate	支架板	1	
5	910100300036	Bolt GB5783-M10x25-8.8	螺栓GB5783-M10x25-8.8	3	
6	255024510007	Multi way valve (four combined)	多路阀(二联)	1	
7	255024510009	Axle φ16x168	带耳轴φ16x168	1	
8	910400100005	Washer GB97.1-6-200HV	平垫圈GB97.1-6-200HV	9	
9	910400500005	Washer GB93-6	弹簧垫圈GB93-6	7	
10	910100300009	Bolt GB5783-M6x12-8.8	螺栓GB5783-M6x12-8.8	5	
11	255024520018	Transition rod	过渡杆	3	
12	910600600026	Split pin GB91-3.2x20	开口销GB91-3.2x20	6	
13	910600700032	Short axle GB882-10x20c1B	销轴GB882-10x20c1B	6	
14	910300100005	Nut GB6170-M6-10	螺母GB6170-M6-10	2	
15	910600600026	Split pin GB91-3.2x20	开口销GB91-3.2x20	2	
16	910600700032	Short axle GB882-10x20c1B	销轴GB882-10x20c1B	2	
17	255024510002	Fixed seat	固定座	1	
18	940500200022	Bushing φ12xφ14x20-SF-1	复合套(带肩)φ12xφ14x20-SF-1	2	
19	255024520016	Pressing plate	压板	1	
20	910100300011	Bolt GB5783-M6x20-8.8	螺栓GB5783-M6x20-8.8	2	



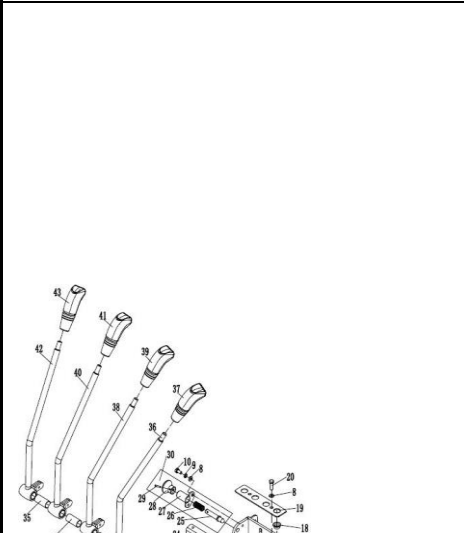
21	910100300023	Bolt GB5783-M8x25-8.8	螺栓GB5783-M8x25-8.8	4	
22	910400500006	Washer GB93-8	弹簧垫圈GB93-8	4	
23	910400100006	Washer GB97.1-8-200HV	平垫圈GB97.1-8-200HV	4	
24	255024520001	Fixing plate	固定板	1	
25	▲	Axle $\phi 10 \times 60$	手柄轴 $\phi 10 \times 60$	1	
26	▲	Spring	压簧	1	
27	▲	Axle $\phi 18 \times 27.5$	带耳轴 $\phi 18 \times 27.5$	1	
28	▲	Handle	手柄	1	
29	▲	Dowel pin GB879.1-3x16	弹性圆柱销GB879.1-3x16	1	
30	255024510006	Handle assembly	解锁手柄总成	1	包含/Inc.25-29
31	255024510001	Holder welding	支架焊合	1	
32	250525020008	Joint	接头	2	
33	910300100006	Nut GB6170-M8-10	螺母GB6170-M8-10	2	
34	255024520017	Connecting rod	连接杆	2	
35	255024520025	Bearing bushing $\phi 18 \times \phi 16 \times 37$	无油轴承套 $\phi 18 \times \phi 16 \times 37$	2	
36	255024510004	Control lever welding (lifting)	操纵杆焊合(起升)	1	
37	255024520022	Handle ball (lifting)	手柄球(起升)	1	
38	255024510005	Control lever welding (slope)	操纵杆焊合(倾斜)	1	
39	255024520023	Handle ball (slope)	手柄球(倾斜)	1	
40	255024520028	Sleeve	轴套	2	

多路换向阀操纵(三联)/Multiple directional control valve (trigeminy)

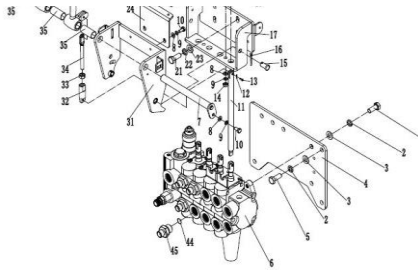


序号/NO	编码/SN	Name	名称	数量/QTY	备注/Remarks
1	910100400003	Bolt GB5786-M10x1.25x25-8.8	螺栓GB5786-M10x1.25x25-8.8	3	
2	910400500007	Washer GB93-10	弹簧垫圈GB93-10	6	
3	910400100007	Washer GB97.1-10-200HV	平垫圈GB97.1-10-200HV	6	
4	255024520024	Supporting plate	支架板	1	
5	910100300036	Bolt GB5783-M10x25-8.8	螺栓GB5783-M10x25-8.8	3	
6	255025010002	Multi way valve (four combined)	多路阀(三联)	1	
7	255024510009	Axle $\phi 16 \times 168$	带耳轴 $\phi 16 \times 168$	1	
8	910400100005	Washer GB97.1-6-200HV	平垫圈GB97.1-6-200HV	9	
9	910400500005	Washer GB93-6	弹簧垫圈GB93-6	7	
10	910100300009	Bolt GB5783-M6x12-8.8	螺栓GB5783-M6x12-8.8	5	
11	255024520018	Transition rod	过渡杆	3	
12	910600600026	Split pin GB91-3.2x20	开口销GB91-3.2x20	9	
13	910600700032	Short axle GB882-10x20c1B	销轴GB882-10x20c1B	9	
14	910300100005	Nut GB6170-M6-10	螺母GB6170-M6-10	2	
15	910600600026	Split pin GB91-3.2x20	开口销GB91-3.2x20	2	
16	910600700032	Short axle GB882-10x20c1B	销轴GB882-10x20c1B	2	
17	255024510002	Fixing seat	固定座	1	
18	940500200022	Bushing $\phi 12 \times \phi 14 \times 20$ -SF-1	复合套(带肩) $\phi 12 \times \phi 14 \times 20$ -SF-1	3	
19	255024520016	Pressing plate	压板	1	
20	910100300011	Bolt GB5783-M6x20-8.8	螺栓GB5783-M6x20-8.8	2	
21	910100300023	Bolt GB5783-M8x25-8.8	螺栓GB5783-M8x25-8.8	4	
22	910400500006	Washer GB93-8	弹簧垫圈GB93-8	4	
23	910400100006	Washer GB97.1-8-200HV	平垫圈GB97.1-8-200HV	4	
24	255024520001	Fixing plate	固定板	1	
25	▲	Axle $\phi 10 \times 60$	手柄轴 $\phi 10 \times 60$	1	
26	▲	Spring	压簧	1	
27	▲	Axle $\phi 18 \times 27.5$	带耳轴 $\phi 18 \times 27.5$	1	
28	▲	Handle	手柄	1	
29	▲	Dowel pin GB879.1-3x16	弹性圆柱销GB879.1-3x16	1	
30	255024510006	Handle assembly	解锁手柄总成	1	包含/Inc.25-29
31	255024510001	Frame welding	支架焊合	1	
32	250525020008	Joint	接头	3	
33	910300100006	Nut GB6170-M8-10	螺母GB6170-M8-10	3	
34	255024520017	Linking rod	连接杆	3	
35	255024520025	Bearing bushing $\phi 18 \times \phi 16 \times 37$	无油轴承套 $\phi 18 \times \phi 16 \times 37$	3	
36	255024510004	Control lever welding (lifting)	操纵杆焊合(起升)	1	
37	255024520022	Handle ball (lifting)	手柄球(起升)	1	
38	255024510005	Control lever welding (slope)	操纵杆焊合(倾斜)	1	
39	255024520023	Handle ball(slope)	手柄球(倾斜)	1	
40	255025010001	Control lever welding (accessory 1)	操纵杆焊合(属具1)	1	
41	255025020002	Handle ball (accessory 1)	手柄球(属具1)	1	
42	255024520028	Sleeve	轴套 $\phi 29 \times \phi 16 \times 38$	1	
43	910800100003	O ring 17x2.65	O形圈-内17x2.65	2	
44	255023520033	Joint-M20x1.5-M16x1.5-60°	接头(直)8-M20x1.5-M16x1.5-60°	2	

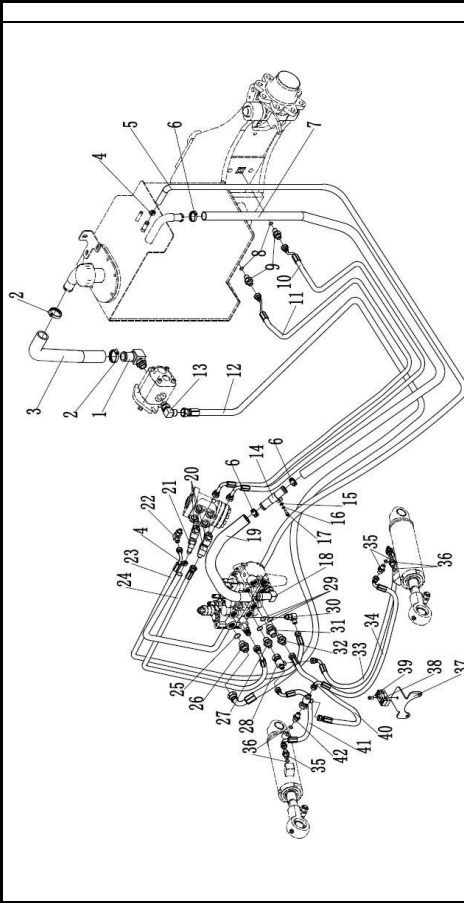
多路换向阀操纵(四联)/Multiple directional control valve(four joint)



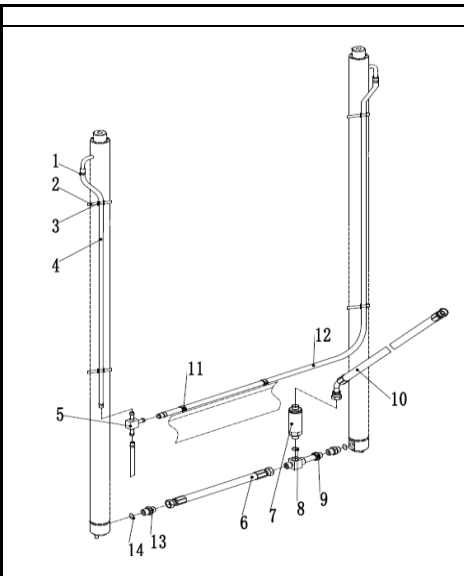
序号/NO	编码/SN	Name	名称	数量/QTY	备注/Remarks
1	910100400003	Bolt GB5786-M10x1.25x25-8.8	螺栓GB5786-M10x1.25x25-8.8	3	
2	910400500007	Washer GB93-10	弹簧垫圈GB93-10	6	
3	910400100007	Washer GB97.1-10-200HV	平垫圈GB97.1-10-200HV	6	
4	255024520024	Supporting plate	支架板	1	
5	910100300036	Bolt GB5783-M10x25-8.8	螺栓GB5783-M10x25-8.8	3	
6	255025010002	Multi way valve (four combined)	多路阀(四联)	1	
7	255024510009	Axle $\phi 16 \times 168$	带耳轴 $\phi 16 \times 168$	1	
8	910400100005	Washer GB97.1-6-200HV	平垫圈GB97.1-6-200HV	9	
9	910400500005	Washer GB93-6	弹簧垫圈GB93-6	7	
10	910100300009	Bolt GB5783-M6x12-8.8	螺栓GB5783-M6x12-8.8	5	
11	255024520018	Transition rod	过渡杆	4	
12	910600600026	split pin GB91-3.2x20	开口销GB91-3.2x20	12	
13	910600700032	Short axle GB882-10x20c1B	销轴GB882-10x20c1B	12	
14	910300100005	Nut GB6170-M6-10	螺母GB6170-M6-10	2	
15	910600600026	split pin GB91-3.2x20	开口销GB91-3.2x20	2	
16	910600700032	Short axle GB882-10x20c1B	销轴GB882-10x20c1B	2	
17	255024510002	Fixing seat	固定座	1	
18	940500200022	Bushing $\phi 12 \times \phi 14 \times 20$ -SF-1	复合套(带肩) $\phi 12 \times \phi 14 \times 20$ -SF-1	4	
19	255024520016	Pressing plate	压板	1	
20	910100300011	Bolt GB5783-M6x20-8.8	螺栓GB5783-M6x20-8.8	2	
21	910100300023	Bolt GB5783-M8x25-8.8	螺栓GB5783-M8x25-8.8	4	
22	910400500006	Washer GB93-8	弹簧垫圈GB93-8	4	
23	910400100006	Washer GB97.1-8-200HV	平垫圈GB97.1-8-200HV	4	
24	255024520001	Fixing plate	固定板	1	
25	▲	Axle $\phi 10 \times 60$	手柄轴 $\phi 10 \times 60$	1	



26	▲	Spring	压簧	1	
27	▲	Axle $\phi 18 \times 27.5$	带耳轴 $\phi 18 \times 27.5$	1	
28	▲	Handle	手柄	1	
29	▲	Dowel pin GB879.1-3x16	弹性圆柱销GB879.1-3x16	1	
30	255024510006	Handle assembly	解锁手柄总成	1	包含/Inc.25-29
31	255024510001	Frame assembly	支架焊合	1	
32	250525020008	Joint	接头	4	
33	910300100006	Nut GB6170-M8-10	螺母GB6170-M8-10	4	
34	255024520017	Connecting rod	连接杆	4	
35	255024520025	Bearing bushing $\phi 18 \times \phi 16 \times 37$	无油轴承套 $\phi 18 \times \phi 16 \times 37$	4	
36	255024510004	Control lever welding(lifting)	操纵杆焊合(起升)	1	
37	255024520022	Handle ball(lifting)	手柄球(起升)	1	
38	255024510005	Control lever welding(slope)	操纵杆焊合(倾斜)	1	
39	255024520023	Handle ball (slope)	手柄球(倾斜)	1	
40	255025010001	Control lever welding(accessory 1)	操纵杆焊合(属具1)	1	
41	255025020002	Handle ball(accessory 1)	手柄球(属具1)	1	
42	255025110001	Control lever welding (accessory 2)	操纵杆焊合(属具2)	1	
43	255025520002	Handle ball (accessory 2)	手柄球(属具2)	1	
44	910800100003	Oring 17x2.65	O形圈-内17x2.65	4	
45	255023520033	Joint 8-M20x1.5-M16x1.5-60°	接头(直)8-M20x1.5-M16x1.5-60°	4	



液压系统/Hydraulic system					
序号/NO	编码/SN	Name	名称	数量/QTY	备注/Remarks
1	255023510005	Joint 25-G1- $\phi 32$	接头(转向弯)25-G1- $\phi 32$	1	
2	911000600006	Hose clamp QC/T390-(40-45)	喉箍QC/T390-(40-45)	2	
3	255023520008	Rubber hose	胶管(吸油)	1	
4	911000600003	Hose clamp QC/T390-(22-26)	喉箍QC/T390-(22-26)	2	
5	255023520006	Oil return hose $\phi 23 \times \phi 13 \times 3600$	回油管 $\phi 23 \times \phi 13 \times 3600$	1	
6	911000600004	Hose clamp QC/T390-(34-38)	喉箍QC/T390-(34-38)	4	
7	255023520013	Oil return hose $\phi 35 \times \phi 25 \times 1900$	回油管 $\phi 35 \times \phi 25 \times 1900$	1	
8	910800100002	Oring 13.2x2.65	O形圈-内13.2x2.65	2	
9	255023520034	Joint 8-2xM16x1.5-60°	接头(直)8-2xM16x1.5-60°	2	
10	255023520002	Hydraulic hose assembly 8-L2700-1SC-60°	液压管总成(异)8-L2700-1SC-60°	1	
11	255023520001	Hydraulic hose assembly 8-L3000-1SC-60°	液压管总成(异)8-L3000-1SC-60°	1	
12	255023520004	Hydraulic hose assembly (90°) 13-L2750-2SC-60°	液压管总成(90°)13-L2750-2SC-60°	1	
13	255023520035	Joint 12-G1/2-M22x1.5-60°	接头(锁定弯)12-G1/2-M22x1.5-60°	1	
14	255023520022	Transition steel pipe	过渡钢管	1	
15	910400100005	Washer GB97.1-6-200HV	平垫圈GB97.1-6-200HV	2	
16	910400500005	Washer GB93-6	弹簧垫圈GB93-6	2	
17	910200200036	Screw GB70.1-M6x20-8.8	螺钉GB70.1-M6x20-8.8	2	
18	255023510002	Joint 16-M22x1.5- $\phi 25$	接头(转向弯)16-M22x1.5- $\phi 25$	1	
19	255023520021	Rubber tube	胶管(回油)	1	
20	255023510007	Joint 8-M18x1.5-M16x1.5-60°	接头(锁定弯)8-M18x1.5-M16x1.5-60°	3	
21	255023520033	Joint 11-M18x1.5-0	接头(锁定弯)11-M18x1.5-0	1	
22	255023510003	Joint 6-G1/4-M14x1.5-60°	接头(锁定弯)6-G1/4-M14x1.5-60°	1	
23	255023520003	Hydraulic hose assembly (90°) 6-L1420-1SC-60°	液压管总成(90°)6-L1420-1SC-60°	1	
24	255023520005	Hydraulic hose assembly (90°) 8-L1420-1SC-60°	液压管总成(90°)8-L1420-1SC-60°	1	
25	910800100015	Oring 19x2.65	O形圈-内19x2.65	1	
26	255023520030	Joint 12-2xM22x1.5-60°	接头(直)12-2xM22x1.5-60°	1	
27	255023520033	Joint 8-M20x1.5-M16x1.5-60°	接头(直)8-M20x1.5-M16x1.5-60°	1	
28	255023510001	Joint 7-2xM14x1.5-M16x1.5-60°	接头(三通)7-2xM14x1.5-M16x1.5-60°	2	
29	910800100003	Oring 17x2.65	O形圈-内17x2.65	3	
30	255023510001	Joint 6-M12x1.5-M14x1.5-60°	接头(锁定弯)6-M12x1.5-M14x1.5-60°	1	
31	255044020122	Joint 12-M20x1.5-M22x1.5-60°	接头(直)12-M20x1.5-M22x1.5-60°	1	
32	255023520032	Joint 6-M20x1.5-M14x1.5-60°	接头(直)6-M20x1.5-M14x1.5-60°	1	
33	255023520017	Hydraulic hose assembly 6-L1000-1SC-60°	液压管总成(直)6-L1000-1SC-60°	1	
34	255023520018	Hydraulic hose assembly (异)6-L1100-1SC-60°	液压管总成(异)6-L1100-1SC-60°	1	
35	255023520007	Joint 6-G1/4-M14x1.5-60°	接头(直)6-G1/4-M14x1.5-60°	3	
36	910800100021	Oring 11.2x2.65	O形圈-内11.2x2.65	4	
37	255023520027	Rubber hose fixing block	胶管固定板	1	
38	255028520034	Rubber hose fixing block	胶管固定块	2	
39	910200200060	Screw GB70.1-M8x35-8.8	螺钉GB70.1-M8x35-8.8	1	
40	255023520012	Hydraulic hose assembly 6-L500-1SC-60°	液压管总成(直)6-L500-1SC-60°	1	
41	255023520016	Hydraulic hose assembly 6-L600-1SC-60°	液压管总成(直)6-L600-1SC-60°	1	
42	255023520019	Joint 8-G1/4-M16x1.5-60°	接头(直)8-G1/4-M16x1.5-60°	1	

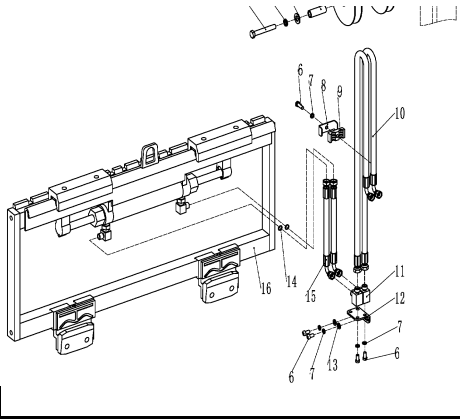


门架起升管路(标准门架)/Mast lifting pipeline (standard mast)					
序号/NO	编码/SN	Name	名称	数量/QTY	备注/Remarks
1	255044020043	Hoop	卡箍	6	
2	921600400002	Strip 8x300	扎带8x300	4	
3	255044020042	Press plate	压板	4	
4	▲	Oil return hose L=620	回油管 L=620	2	
	▲	Oil return hose L=870	回油管 L=870	2	
	▲	Oil return hose L=1120	回油管 L=1120	2	
	▲	Oil return hose L=1270	回油管 L=1270	2	
	▲	Oil return hose L=1370	回油管 L=1370	2	
	▲	Oil return hose L=1420	回油管 L=1420	2	
	▲	Oil return hose L=1470	回油管 L=1470	2	
	▲	Oil return hose L=1620	回油管 L=1620	2	
	▲	Oil return hose L=1770	回油管 L=1770	2	
	▲	Oil return hose L=1920	回油管 L=1920	2	
	▲	Oil return hose L=2120	回油管 L=2120	2	
	▲	Oil return hose L=2370	回油管 L=2370	2	
▲	Oil return hose L=2620	回油管 L=2620	2		
5	255044020118	Joint	接头(三通)	1	
6	255044020150	Hydraulic hose assembly 13-L360-2SC-60°	液压管总成(直)13-L360-2SC-60°	1	
7	950700300002	Speed limit valve XSF-F16L-48	限速阀 XSF-F16L-48	1	
8	910800100040	Oring-out 24x2.4	O形圈-外24x2.4	1	
9	255044010040	Joint	接头(三通)	1	
10	255044020013	Hydraulic hose assembly (90°) 13-L680-2SC-60°	液压管总成(90°)13-L680-2SC-60°	1	
11	921600400003	Strip P-N156-00646	扎带(带扣)P-N156-00646	2	
12	▲	Oil return hose 2	回油管 2	1	
13	910800100003	Oring 17x2.65	O形圈-内17x2.65	3	
14	255044020122	Joint 12-M20x1.5-M22x1.5-60°	接头(直)12-M20x1.5-M22x1.5-60°	1	

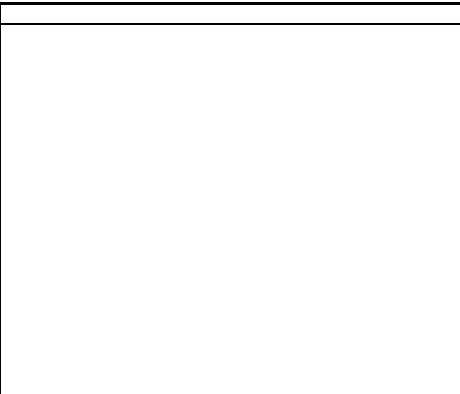
门架起升管路 (二级全自由)/Mast lifting pipeline (two stage full free lift)		序号/NO	编码/SN	Name	名称	数量/QTY	备注/Remarks
	1	255043529001	Joint 12-2xM22x1.5-60°	接头(锁定弯)12-2xM22x1.5-60°	1		
	2	255043520009	Hydraulic steel pipe L=760	液压钢管L=760	1	H=2000	
		255043520010	Hydraulic steel pipe L=1010	液压钢管L=1010	1	H=2500	
		255043520011	Hydraulic steel pipe L=1300	液压钢管L=1300	1	H=3000	
		255043520012	Hydraulic steel pipe L=1460	液压钢管L=1460	1	H=3300	
		255043520013	Hydraulic steel pipe L=1610	液压钢管L=1610	1	H=3500	
		255043520013	Hydraulic steel pipe L=1610	液压钢管L=1610	1	H=3600	
		255043520013	Hydraulic steel pipe L=1610	液压钢管L=1610	1	H=3700	
		255043520014	Hydraulic steel pipe L=1850	液压钢管L=1850	1	H=4000	
		255043520015	Hydraulic steel pipe L=2010	液压钢管L=2010	1	H=4300	
		255043520016	Hydraulic steel pipe L=2110	液压钢管L=2110	1	H=4500	
	255043520017	Hydraulic steel pipe L=2360	液压钢管L=2360	1	H=5000		
	255043520018	Hydraulic steel pipe L=2710	液压钢管L=2710	1	H=5500		
255043520019	Hydraulic steel pipe L=2960	液压钢管L=2960	1	H=6000			
3	255044520132	Hose clamp	油管夹	1			
4	910200200038	Screw GB70.1-M6x25	螺钉GB70.1-M6x25	1			
5	255043520008	Hydraulic hose	液压软管	1			
6	255044020119	Hydraulic hose assembly 13-L395	液压管总成(直)13-L395-2SC-60°	1			
7	255044020015	Speed limit valve XSF-F16L-2T	限速阀	1			
8	910800100004	Oring 18x2.65	O形圈-内18x2.65	1			
9	255044010040	Joint	三通接头	1			
10	255044020013	Hydraulic hose assembly (90°)	液压管总成(90°)13-L680-2SC-60°	1			
11	255043520022	Joint 12-M27x1.5-M22x1.5-60°	接头(锁定弯)12-M27x1.5-M22x1.5-60°	1			
12	255044020122	Joint M20x1.5-M22x1.5	接头(直)M20x1.5-M22x1.5	1			
13	910800100003	Oring 17x2.65	O形圈-内17x2.65	3			

门架起升管路 (三级全自由)/Mast lifting pipeline (three stage full free lift)		序号/NO	编码/SN	Name	名称	数量/QTY	备注/Remarks
	1	255044520081	Bushing	衬套	1		
	2	284044520075	Hydraulic hose assembly 13-L1910	液压管总成(直)13-L1910-2CS-60°	1	H=3600	
		255044520071	Hydraulic hose assembly 13-L2180	液压管总成(直)13-L2180-2CS-60°	1	H=4000	
		255044520072	Hydraulic hose assembly 13-L2480	液压管总成(直)13-L2480-2CS-60°	1	H=4300	
		255044520073	Hydraulic hose assembly 13-L2530	液压管总成(直)13-L2530-2CS-60°	1	H=4500	
		255044520074	Hydraulic hose assembly 13-L2730	液压管总成(直)13-L2730-2CS-60°	1	H=4700/4800	
		255044520075	Hydraulic hose assembly 13-L3015	液压管总成(直)13-L3015-2CS-60°	1	H=5000	
		255044520076	Hydraulic hose assembly 13-L3480	液压管总成(直)13-L3480-2CS-60°	1	H=5400/5500	
		255044520077	Hydraulic hose assembly 13-L3950	液压管总成(直)13-L3950-2CS-60°	1	H=6000	
		255044520124	Hydraulic hose assembly 13-L4410	液压管总成(直)13-L4410-2CS-60°	1	H=6500	
		3	255044520096	Pulley	滑轮Φ120x36(单槽)	1	
	4	910400100008	Washer GB97.1-12-200HV	平垫圈GB97.1-12-200HV	1		
	5	910400500008	Washer GB93-12	弹簧垫圈GB93-12	1		
	6	910100300054	Bolt GB5783-M12x50-8.8	螺栓GB5783-M12x50-8.8	1		
	7	255044020043	Hoop 13	卡箍13	5		
	8	921600400002	Strip 8x300	扎带8x300	6		
	9	255044020042	Press plate	压板	6		
	10	255044510020	Hydraulic steel pipe welding	液压钢管焊合	1		
	11	910400500006	Washer GB93-8	弹簧垫圈GB93-8	5		
	12	910100300022	Bolt GB5783-M8x20-8.8	螺栓GB5783-M8x20-8.8	3		
	13	255044020070	Hydraulic hose assembly 13-L620	液压管总成(直)13-L620-2SC-60°	1		
	14	255044510021	Hydraulic steel pipe welding	液压钢管焊合	1		
	15	910800100003	Oring 17x2.65	O形圈-内17x2.65	2		
	16	255044020122	Joint 12-M20x1.5-M22x1.5-60°	接头(直)12-M20x1.5-M22x1.5-60°	1		
	17	255044520067	Hydraulic hose assembly 13-L330	液压管总成(直)13-L330-2SC-60°	1		
	18	255023520030	Joint 12-2xM22x1.5-60°	接头(直)12-2xM22x1.5-60°	2		
	19	255044010040	Joint	三通接头	1		
	20	255044520080	Joint	内外接头	1		
	21	▲	Oil return hose L=655	回油管L=655	1		
		▲	Oil return hose L=780	回油管L=780	1		
		▲	Oil return hose L=830	回油管L=830	1		
		▲	Oil return hose L=930	回油管L=930	1		
▲		Oil return hose L=1075	回油管L=1075	1			
▲		Oil return hose L=1310	回油管L=1310	1			
22	▲	Oil return hose L=1540	回油管L=1540	1			
	22	255044020118	Joint	三通接头	1		
	▲	Oil return hose L=1195	回油管L=1195	1			
	▲	Oil return hose L=1320	回油管L=1320	1			
	▲	Oil return hose L=1370	回油管L=1370	1			
	▲	Oil return hose L=1470	回油管L=1470	1			
23	▲	Oil return hose L=1615	回油管L=1615	1			
	▲	Oil return hose L=1850	回油管L=1850	1			
	▲	Oil return hose L=2010	回油管L=2010	1			
	24	921600400003	Strip P/N 156-00646	带扣扎带 P/N 156-00646	2		
	25	910400100006	Washer GB97.1-8-200HV	平垫圈GB97.1-8-200HV	3		
26	910100300024	Bolt GB5783-M8x30-8.8	螺栓GB5783-M8x30-8.8	2			
27	255044510022	Three joint welding	三通焊合	1			
28	950700300002	Speed limit valve XSF-F16L-48	限速阀 XSF-F16L-48	1			
29	255044520069	Hydraulic hose assembly (90°) 13-L1050-2SC-60°	液压管总成(90°)13-L1050-2SC-60°	1			
30	255043520022	Joint 12-M27x1.5-M22x1.5-60°	接头(锁定弯)12-M27x1.5-M22x1.5-60°	1			
31	910800100004	Oring 18x2.65	O形圈-内18x2.65	2			
32	255044520068	Hydraulic hose assembly 13-L450	液压管总成(直)13-L450-2CS-60°	1			

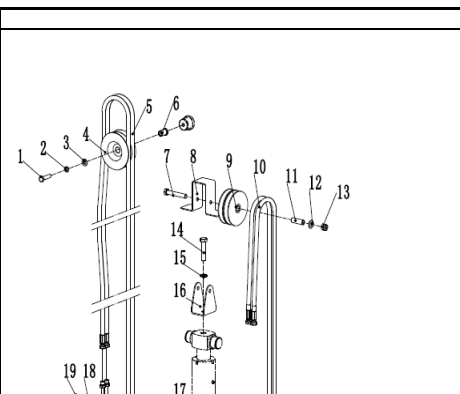
侧移器及管路安装 (标准门架)/Side shifter and pipeline installation (standard mast)		序号/NO	编码/SN	Name	名称	数量/QTY	备注/Remarks
	1	910100100056	Bolt GB5782-M12x90-8.8	螺栓GB5782-M12x90-8.8	1		
	2	910400500008	Washer GB93-12	弹簧垫圈GB93-12	1		
	3	910400100008	Washer GB97.1-12-200HV	平垫圈GB97.1-12-200HV	1		
	4	255030520022	Bush Φ22xΦ13x56	衬套Φ22xΦ13x56	1		
	5	255030520021	Pulley Φ110x27	滑轮Φ110x27(单槽)	2		
	6	910200200059	Screw GB70.1-M8x30-8.8	螺钉GB70.1-M8x30-8.8	2		
	7	910400500006	Washer GB93-8	弹簧垫圈GB93-8	6		
	8	255028520034	Rubber pipe lump	胶管固定块	2		
	9	255028520035	Pipe press fixedly plank	管夹安装板	2		
	10	255028520046	Hydraulic hose assembly (90°)8-L290	液压管总成(90°)8-L2950-1SC-60°	2	H=2000	



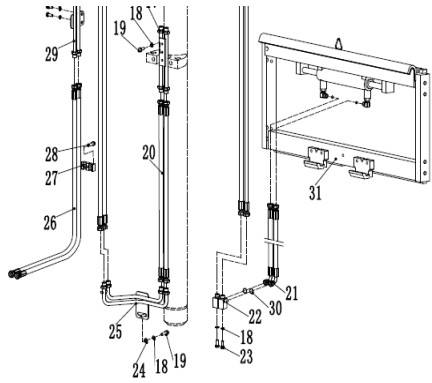
10	255028520047	Hydraulic hose assembly (90°)8-L345	液压管总成(90°)8-L345-1SC-60°	2	H=2500
	255027520011	Hydraulic hose assembly (90°)8-L405	液压管总成(90°)8-L405-1SC-60°	2	H=3000
	255027520012	Hydraulic hose assembly (90°)8-L425	液压管总成(90°)8-L425-1SC-60°	2	H=3300
	255027520013	Hydraulic hose assembly (90°)8-L440	液压管总成(90°)8-L440-1SC-60°	2	H=3500
	255027520001	Hydraulic hose assembly (90°)8-L450	液压管总成(90°)8-L450-1SC-60°	2	H=3600
	255027520014	Hydraulic hose assembly (90°)8-L465	液压管总成(90°)8-L465-1SC-60°	2	H=3700
	255027520015	Hydraulic hose assembly (90°)8-L500	液压管总成(90°)8-L500-1SC-60°	2	H=4000
	255027520016	Hydraulic hose assembly (90°)8-L535	液压管总成(90°)8-L535-1SC-60°	2	H=4300
	255027520017	Hydraulic hose assembly (90°)8-L555	液压管总成(90°)8-L555-1SC-60°	2	H=4500
	255027520018	Hydraulic hose assembly (90°)8-L615	液压管总成(90°)8-L615-1SC-60°	2	H=5000
	255027520019	Hydraulic hose assembly (90°)8-L665	液压管总成(90°)8-L665-1SC-60°	2	H=5500
	255027520020	Hydraulic hose assembly (90°)8-L715	液压管总成(90°)8-L715-1SC-60°	2	H=6000
11	255029020024	Joint 8-2XM16x1.5-60°	接头(锁定弯)8-2xM16x1.5-60°	2	
12	254127520001	fixedly plank	安装板	1	
13	910400100006	Washer GB97.1-8-200HV	平垫圈GB97.1-8-200HV	2	
14	910800100001	Oring 9.5x1.8	O形圈-内9.5x1.8	4	
15	255042520101	Hydraulic hose assembly (90°)8-L500	液压管总成(90°)8-L500-1SC-60°-0°	2	
16	255042510004	Side shifter assembly(LH)	侧移器总成(LH)	1	选装/optional
16	255042510001	Side shifter assembly(LD)	侧移器总成(LD)	1	选装/optional
16	255042510002	Side shifter assembly(CASCADE)	侧移器总成(卡斯卡特)	1	选装/optional



侧移器及管路安装(二级全自由)/Side shifter and pipeline installation(two stage full free)					
序号/NO	编码/SN	Name	名称	数量/QTY	备注/Remarks
1	910300500006	Nut GB889.1-M12-10	螺母GB889.1-M12-10	1	
2	910400100008	Washer GB97.1-12-200HV	平垫圈GB97.1-12-200HV	1	
3	255028520043	Plate	挡链板	1	
4	255030520021	Pulley φ110x27	滑轮φ110x27(单槽)	2	
5	255030520022	Bushing Φ22xΦ13x56	衬套Φ22xΦ13x56	1	
6	910100100058	Bolt GB5782-M12x100-8.8	螺栓GB5782-M12x100-8.8	1	
7	910400500006	Washer GB93-8	弹簧垫圈GB93-8	11	
8	910200200057	Screw GB70.1-M8x20-8.8	螺钉GB70.1-M8x20-8.8	7	
9	255028510001	Groove welding L=670	外导槽焊合L=670	1	H=2000
	255028510002	Groove welding L=840	外导槽焊合L=840	1	H=2500
	255028510003	Groove welding L=1090	外导槽焊合L=1090	1	H=3000
	255028510004	Groove welding L=1240	外导槽焊合L=1240	1	H=3300/3500
	255028510005	Groove welding L=1390	外导槽焊合L=1390	1	H=3600/3700
	255028510006	Groove welding L=1640	外导槽焊合L=1640	1	H=4000
10	255028520052	Press plate	压板	2	
11	910200200039	Screw GB70.1-M6x30-8.8	螺钉GB70.1-M6x30-8.8	2	
12	252030520016	Hydraulic hose assembly 8-L2220-1S	液压管总成(直)8-L2220-1SC-60°	2	H=2000
	254130520009	Hydraulic hose assembly 8-L2470-1S	液压管总成(直)8-L2470-1SC-60°	2	H=2500
	263028520010	Hydraulic hose assembly 8-L2940-1S	液压管总成(直)8-L2940-1SC-60°	2	H=3000
	255030520013	Hydraulic hose assembly 8-L3180-1S	液压管总成(直)8-L3180-1SC-60°	2	H=3300/3500
	254128520039	Hydraulic hose assembly 8-L3250-1S	液压管总成(直)8-L3250-1SC-60°	2	H=3600/3700
	255028520059	Hydraulic hose assembly 8-L3600-1S	液压管总成(直)8-L3600-1SC-60°	2	H=4000
13	255028510011	Groove welding L=530	内导槽焊合L=530	1	H=2000
	255028510012	Groove welding L=650	内导槽焊合L=650	1	H=2500
	255028510013	Groove welding L=780	内导槽焊合L=780	1	H=3000
	255028510014	Groove welding L=870	内导槽焊合L=870	1	H=3300/3500
	255028510015	Groove welding L=930	内导槽焊合L=930	1	H=3600/3700
	255028510016	Groove welding L=1030	内导槽焊合L=1030	1	H=4000
14	921600400002	Strip 8x300	扎带8x300	2	
15	255028510022	Transition steel pipe	过渡钢管	1	
16	255030520026	Pulley frame	滑轮架体	1	
17	910100100072	Bolt GB5782-M16x60-8.8	螺栓GB5782-M16x60-8.8	1	
18	910400100010	Washer GB97.1-16-200HV	平垫圈GB97.1-16-200HV	1	
19	255028520008	Hydraulic hose assembly 8-L1030-1S	液压管总成(直)8-L1030-1SC-60°	2	H=2000
	255028520009	Hydraulic hose assembly 8-L1280-1S	液压管总成(直)8-L1280-1SC-60°	2	H=2500
	255028520010	Hydraulic hose assembly 8-L1470-1S	液压管总成(直)8-L1470-1SC-60°	2	H=3000
	255028520011	Hydraulic hose assembly 8-L1620-1S	液压管总成(直)8-L1620-1SC-60°	2	H=3300
	255028520012	Hydraulic hose assembly 8-L1730-1S	液压管总成(直)8-L1730-1SC-60°	2	H=3500
	255028520013	Hydraulic hose assembly 8-L1550-1S	液压管总成(直)8-L1550-1SC-60°	2	H=3600/3700
	255028520015	Hydraulic hose assembly 8-L1770-1S	液压管总成(直)8-L1770-1SC-60°	2	H=4000
20	255042520101	Hydraulic hose assembly (90°)8-L500	液压管总成(90°)8-L500-1SC-60°-0°	2	
21	255029020024	Joint 8-2XM16x1.5-60°	接头(锁定弯)8-2xM16x1.5-60°	2	
22	910400500006	Washer GB93-8	弹簧垫圈GB93-8	1	
22	910100300025	Bolt GB5783-M8x35-8.8	螺栓GB5783-M8x35-8.8	2	
23	910800100001	Oring 9.5x1.8	O形圈-内9.5x1.8	4	
24	255042510004	Side shifter assembly(LH)	侧移器总成(LH)	1	选装/optional
24	255042510001	Side shifter assembly(LD)	侧移器总成(LD)	1	选装/optional
24	255042510002	Side shifter assembly(CASCADE)	侧移器总成(卡斯卡特)	1	选装/optional
25	910200200060	Screw GB70.1-M8x35-8.8	螺钉GB70.1-M8x35	1	
26	255028520035	Pipe press fixedly plank	管夹安装板	1	
27	255028520034	Hose fixing bloke	胶管固定块	1	
28	910400200005	Washer GB96.1-12-200HV	大垫圈GB96.1-12-200HV	2	

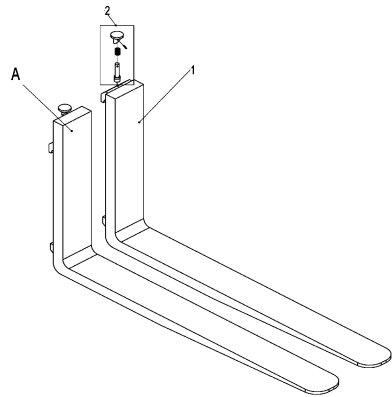


侧移器及管路安装(三级全自由)/Side shifter and pipeline installation(three stage full free)					
序号/NO	编码/SN	Name	名称	数量/QTY	备注/Remarks
1	910100100048	Bolt GB5782-M12x50-8.8	螺栓GB5782-M12x50-8.8	1	
2	910400500008	Washer GB93-12	弹簧垫圈GB93-12	1	
3	910400100008	Washer GB97.1-12-200HV	平垫圈GB97.1-12-200HV	2	
4	255030520020	Pulley Φ x36 120 (dual slot)	滑轮Φ120x36(双槽)	1	
5	255023520036	Hydraulic hose assembly 8-L1800-1C	液压管总成(直)8-L1800-1CS-60°	1	H=3600
5	255030520001	Hydraulic hose assembly 8-L2060-1C	液压管总成(直)8-L2060-1CS-60°	1	H=4000
5	255030520002	Hydraulic hose assembly 8-L2310-1C	液压管总成(直)8-L2310-1CS-60°	1	H=4300
5	255030520003	Hydraulic hose assembly 8-L2410-1C	液压管总成(直)8-L2410-1CS-60°	1	H=4500
5	255030520004	Hydraulic hose assembly 8-L2610-1C	液压管总成(直)8-L2610-1CS-60°	1	H=4800/4700
5	255030520005	Hydraulic hose assembly 8-L2900-1C	液压管总成(直)8-L2900-1CS-60°	1	H=5000
5	255030520006	Hydraulic hose assembly 8-L3370-1C	液压管总成(直)8-L3370-1CS-60°	1	H=5500/5400
5	255030520007	Hydraulic hose assembly 8-L3840-1C	液压管总成(直)8-L3840-1CS-60°	1	H=6000
5	263030520008	Hydraulic hose assembly 8-L4330-1C	液压管总成(直)8-L4330-1CS-60°	1	H=6500
6	255030520023	Bushing	衬套1	1	
7	910100100058	Bolt GB5782-M12x100-8.8	螺栓GB5782-M12x100-8.8	1	
8	255028520043	Chain plate	挡链板	1	
9	255030520021	Pulley φ110x27	滑轮φ110x27(单槽)	2	



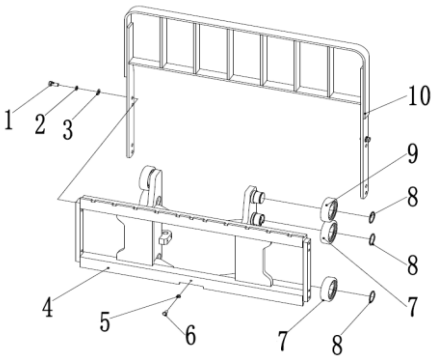
10	255030520010	Hydraulic hose assembly8-L1310-1C	液压管总成 (直) 8-L1310-1CS-60°	2	H=4000/3600
10	255030520012	Hydraulic hose assembly8-L1400-1C	液压管总成 (直) 8-L1400-1CS-60°	2	H=4300
10	255030520012	Hydraulic hose assembly8-L1400-1C	液压管总成 (直) 8-L1400-1CS-60°	2	H=4500
10	255030520037	Hydraulic hose assembly8-L1500-1C	液压管总成 (直) 8-L1500-1CS-60°	2	H=4800/4700
10	255030520011	Hydraulic hose assembly8-L1620-1C	液压管总成 (直) 8-L1450-1CS-60°	2	H=5000
10	255030520011	Hydraulic hose assembly8-L1620-1C	液压管总成 (直) 8-L1620-1CS-60°	2	H=5500/5400
10	255030520025	Hydraulic hose assembly8-L1920-1C	液压管总成 (直) 8-L1920-1CS-60°	2	H=6000
10	255028520044	Hydraulic hose assembly8-L2150-1C	液压管总成 (直) 8-L2150-1CS-60°	2	H=6500
11	255030520022	Bush Φ22xΦ13x56	衬套Φ22xΦ13x56	1	
12	910400100008	Washer GB97.1-12-200HV	平垫圈GB97.1-12-200HV	2	
13	910300500006	Nut GB889.1-M12-10	螺母GB889.1-M12-10	1	
14	910100100072	Bolt GB5782-M16x60-8.8	螺栓GB5782-M16x60-8.8	1	
15	910400100010	Washer GB97.1-16-200HV	平垫圈GB97.1-16-200HV	1	
16	255030520026	Pulley frame	滑轮架体	1	
17	255028510022	Transition steel plate	过渡钢管	1	
18	910400100006	Washer GB93-8	弹簧垫圈GB93-8	5	
19	910100300022	Bolt GB5783-M8x20-8.8	螺栓GB5783-M8x20-8.8	5	
20	255030520050	Hydraulic hose assembly 8-L300-1CS	液压管总成 (直) 8-L300-1CS-60°	2	H=3600
20	255030520008	Hydraulic hose assembly 8-L360-1CS	液压管总成 (直) 8-L360-1CS-60°	2	4000≤H≤5000
20	255030520009	Hydraulic hose assembly 8-L610-1CS	液压管总成 (直) 8-L610-1CS-60°	2	H>5000
21	255042520101	Hydraulic hose assembly (90°) 8-L500-1CS-60°-0°	液压管总成 (90°) 8-L500-1CS-60°-0°	2	
22	255029020024	Joint 8-2XM16x1.5-60°	接头(锁定弯) 8-2xM16x1.5-60°	2	
23	910100300025	Bolt GB5783-M8x35-8.8	螺栓GB5783-M8x35-8.8	2	
24	910400500006	Washer GB97.1-8-200HV	平垫圈GB97.1-8-200HV	5	
25	255030520019	Hydraulic steel pipe welding 2	液压钢管焊合2	1	
26	255030520017	Hydraulic hose assembly8-L1450-1C	液压管总成 (直) 8-L1450-1CS-60°	2	
27	255028520034	Hose fixing bloke	胶管固定块	2	
28	910200200060	Screw GB70.1-M8x35-8.8	螺钉GB70.1-M8x35-8.8	1	
29	255030520018	Hydraulic steel pipe welding	液压钢管焊合	1	
30	910800100001	Oring 9.5x1.8	O形圈-内9.5x1.8	4	
31	255042510004	Side shifter assembly(LH)	侧移器总成(LH)	1	选装/optional
31	255042510001	Side shifter assembly(LD)	侧移器总成(LD)	1	选装/optional
31	255042510002	Side shifter assembly(CASCADE)	侧移器总成(卡斯卡特)	1	选装/optional
32	910400200005	Washer GB96.1-12-200HV	大垫圈GB96.1-12-200HV	2	
33	255028520035	Pipe press fixedly plank	管夹安装板	2	

货叉/Fork



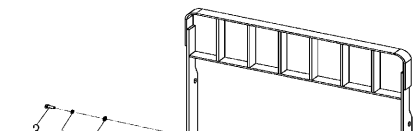
序号/NO	编码/SN	Name	名称	数量/QTY	备注/Remarks
A	940100100008	Fork 120x40x1070	挂钩IIA型货叉120x40x1070	2	包含/Inc. 1-2
	940100100010	Fork 120x40x1150	挂钩IIA型货叉120x40x1150	2	包含/Inc. 1-2
	940100100009	Fork 120x40x1220	挂钩IIA型货叉120x40x1220	2	包含/Inc. 1-2
	940100100011	Fork 120x40x1370	挂钩IIA型货叉120x40x1370	2	包含/Inc. 1-2
	940100100012	Fork 120x40x1520	挂钩IIA型货叉120x40x1520	2	包含/Inc. 1-2
1	▲	Fork body	货叉体	2	▲
2	253098514101	Lift pin assembly	提销总成	2	

货叉架(标准门架)/carrier (standard mast)

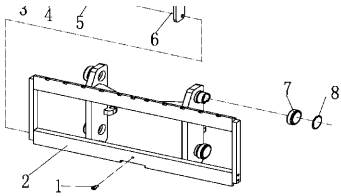


序号/NO	编码/SN	Name	名称	数量/QTY	备注/Remarks
1	910100300062	Bolt GB5783-M14x30-8.8	螺栓GB5783-M14x30-8.8	8	
2	910400500009	Washer GB93-14	弹簧垫圈GB93-14	8	
3	910400100009	Washer GB97.1-14-200HV	平垫圈GB97.1-14-200HV	8	
4	255038014001	Fork carrier welding (standard)	货叉架焊合A(标准门架)	1	
5	910400100007	Washer GB97.1-10-200HV	平垫圈GB97.1-10-200HV	1	
6	910200200077	Screw GB70.1-M10x30-8.8	螺钉GB70.1-M10x30-8.8	1	
7	940200300025	Roller φ119.6-range=59.5-64.5	复合滚轮φ119.6-range=59.5-64.5	4	
8	910401300026	Circlip GB894.1-55	轴用弹性挡圈GB894.1-55	6	
9	940200100020	Main roller φ119.2xφ55x34	主滚轮φ119.2xφ55x34	2	
10	255040510001	Load backrest welding	挡货架焊合	1	

货叉架(二级全自由)/Fork carrier (two stage full free)

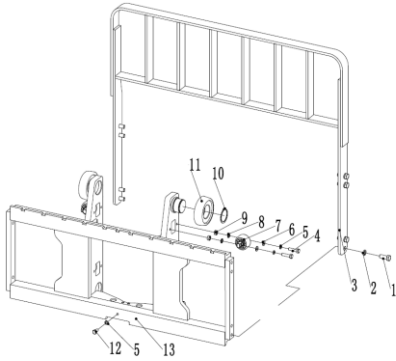


序号/NO	编码/SN	Name	名称	数量/QTY	备注/Remarks
1	910200200077	Screw GB70.1-M10x30-8.8	螺钉GB70.1-M10x30-8.8	1	
2	255038015001	Fork carrier welding (two stage full free)	货叉架焊合A(二级全自由)	1	
3	910100300062	Bolt GB5783-M14x30-8.8	螺栓GB5783-M14x30-8.8	8	
4	910400500009	Washer GB93-14	弹簧垫圈GB93-14	8	
5	910400100009	Washer GB97.1-14-200HV	平垫圈GB97.1-14-200HV	8	
6	255040510001	Fork carrier welding	挡货架焊合	1	



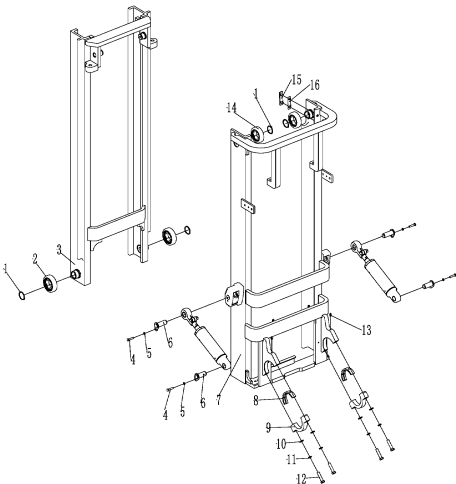
7	940200300025	Roller φ119.6-range=59.5-64.5	复合滚轮φ119.6-range=59.5-64.5	4	
8	910401300026	Circlip GB894.1-55	轴用弹性挡圈GB894.1-55	2	

货叉架 (三级全自由) /Fork carrier(three stage full free)



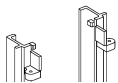
序号/NO	编码/SN	Name	名称	数量/QTY	备注/Remarks
1	910100300062	Bolt GB5783-M14x30-8.8	螺栓GB5783-M14x30-8.8	8	
2	910400500009	Washer GB93-14	弹簧垫圈GB93-14	8	
3	910400100009	Washer GB97.1-14-200HV	平垫圈GB97.1-14-200HV	8	
4	910100300039	Bolt GB5783-M10x40-8.8	螺栓GB5783-M10x40-8.8	1	
5	910400100007	Washer GB97.1-10-200HV	平垫圈GB97.1-10-200HV	1	
6	910400500008	Washer GB93-12	弹簧垫圈GB93-12	1	
7	940200200006	Side roller φ58-CD=60	侧滚轮φ58-CD=60	4	
8	255038020008	Side roller adjusting bushing	侧滚轮调整套	4	
9	255038020009	Side roller adjusting pad	侧滚轮调整垫	4	
10	910401300026	Circlip GB894.1-55	轴用弹性挡圈GB894.1-55	2	
11	940200300025	Roller φ119.6-range=59.5-64.5	复合滚轮φ119.6-range=59.5-64.5	4	
12	910200200077	Screw GB70.1-M10x30-8.8	螺钉GB70.1-M10x30-8.8	1	
13	255038016001	Fork carrier welding (three stage full free)	货叉架焊台A(三级全自由)	1	

门架 (标准门架) /Mast (standard mast)

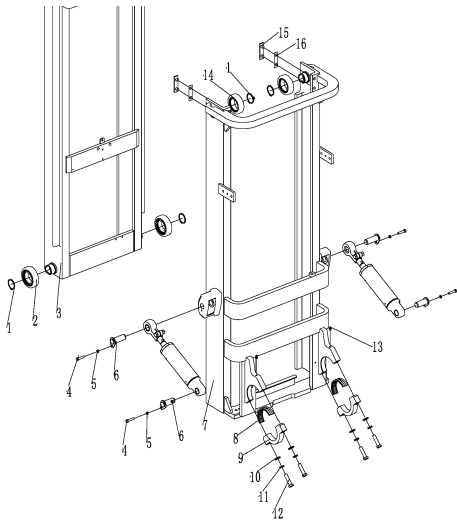


序号/NO	编码/SN	Name	名称	数量/QTY	备注/Remarks
1	910401300026	Circlip GB894.1-55	轴用弹性挡圈GB894.1-55	2	
2	940200300025	Roller φ119.6-range=59.5-64.5	复合滚轮φ119.6-range=59.5-64.5	4	
3	255044010001	Mast 2000	内门架焊合2000	1	H=2000
	255044010002	Mast 2500	内门架焊合2500	1	H=2500
	255044010003	Mast 3000	内门架焊合3000	1	H=3000
	255044010004	Mast 3300	内门架焊合3300	1	H=3300
	255044010005	Mast 3500	内门架焊合3500	1	H=3500
	255044010006	Mast 3600	内门架焊合3600	1	H=3600
	255044010007	Mast 3700	内门架焊合3700	1	H=3700
	255044010008	Mast 4000	内门架焊合4000	1	H=4000
	255044010009	Mast 4300	内门架焊合4300	1	H=4300
	255044010010	Mast 4500	内门架焊合4500	1	H=4500
	255044010011	Mast 5000	内门架焊合5000	1	H=5000
	255044010012	Mast 5500	内门架焊合5500	1	H=5500
	255044010013	Mast 6000	内门架焊合6000	1	H=6000
4	910100300035	Bolt GB5783-M10x20-8.8	螺栓GB5783-M10x20-8.8	4	
5	910400500007	Washer GB93-10	弹簧垫圈GB93-10	4	
6	255044010057	Axle φ30x82	带耳轴φ30x82	4	
7	255044010014	Mast 2000	外门架焊合2000	1	H=2000
7	255044010015	Mast 2500	外门架焊合2500	1	H=2500
7	255044010016	Mast 3000	外门架焊合3000	1	H=3000
7	255044010017	Mast 3300	外门架焊合3300	1	H=3300
7	255044010018	Mast 3500	外门架焊合3500	1	H=3500
7	255044010019	Mast 3600	外门架焊合3600	1	H=3600
7	255044010020	Mast 3700	外门架焊合3700	1	H=3700
7	255044010021	Mast 4000	外门架焊合4000	1	H=4000
7	255044010022	Mast 4300	外门架焊合4300	1	H=4300
7	255044010023	Mast 4500	外门架焊合4500	1	H=4500
7	255044010024	Mast 5000	外门架焊合5000	1	H=5000
7	255044010025	Mast 5500	外门架焊合5500	1	H=5500
7	255044010026	Mast 6000	外门架焊合6000	1	H=6000
8	255044020006	Bearing bush	轴瓦	2	
9	255044020005	Bearing cover	支座盖	2	
10	910400500010	Washer GB93-16	弹簧垫圈GB93-16	4	
11	910100200016	Bolt GB5785-M16x1.5x70-8.8	螺栓GB5785-M16x1.5x70-8.8	4	
12	910400100010	Washer GB97.1-16-200HV	平垫圈GB97.1-16-200HV	4	
13	911200100004	Grease nipple JB7940.1-M10x1	油杯JB7940.1-M10x1	2	
14	940200300013	Roller φ111-range=53-58	复合滚轮φ111-range=53-58	2	
16	255044020131	Guide plate	垫板	2	
16	255044020132	Adjusting pad φ35xφ16x0.8	调整垫φ35xφ16x0.8	2	选装/optional
	255044020133	Adjusting pad φ35xφ16x0.5	调整垫φ35xφ16x0.5	2	选装/optional
	255044020134	Adjusting pad φ35xφ16x0.2	调整垫φ35xφ16x0.2	2	选装/optional

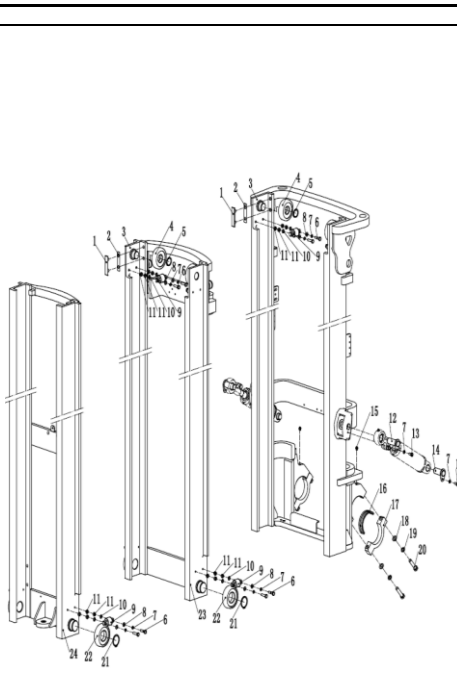
门架 (二级全自由) /Mast (two stage full free)



序号/NO	编码/SN	Name	名称	数量/QTY	备注/Remarks
1	910401300026	Circlip GB894.1-55	轴用弹性挡圈GB894.1-55	2	
2	940200300025	Roller φ119.6-range=59.5-64.5	复合滚轮φ119.6-range=59.5-64.5	2	
3	255043510027	Mast 2000	内门架焊合2000	1	H=2000
	255043510028	Mast 2500	内门架焊合2500	1	H=2500
	255043510029	Mast 3000	内门架焊合3000	1	H=3000
	255043510030	Mast 3300	内门架焊合3300	1	H=3300
	255043510031	Mast 3500	内门架焊合3500	1	H=3500
	255043510032	Mast 3600	内门架焊合3600	1	H=3600
	255043510033	Mast 3700	内门架焊合3700	1	H=3700
	255043510034	Mast 4000	内门架焊合4000	1	H=4000
	255043510035	Mast 4300	内门架焊合4300	1	H=4300



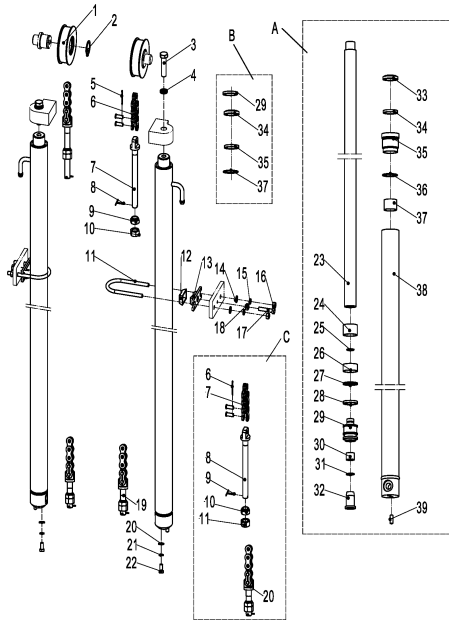
	255043510036	Mast4500	内门架焊合4500	1	H=4500	
	255043510037	Mast5000	内门架焊合5000	1	H=5000	
	255043510038	Mast5500	内门架焊合5500	1	H=5500	
	255043510039	Mast6000	内门架焊合6000	1	H=6000	
4	910100300035	Bolt GB5783-M10x20-8.8	螺栓GB5783-M10x20-8.8	4		
5	910400500007	Washer GB93-10	弹簧垫圈GB93-10	4		
6	255044010057	Axle φ30x82	带耳轴 φ30x82	4		
7	255043510014	Mast 2000	外门架焊合2000	1	H=2000	
7	255043510015	Mast 2500	外门架焊合2500	1	H=2500	
7	255043510016	Mast 3000	外门架焊合3000	1	H=3000	
7	255043510017	Mast 3300	外门架焊合3300	1	H=3300	
7	255043510018	Mast 3500	外门架焊合3500	1	H=3500	
7	255043510019	Mast 3600	外门架焊合3600	1	H=3600	
7	255043510020	Mast3700	外门架焊合3700	1	H=3700	
7	255043510021	Mast 4000	外门架焊合4000	1	H=4000	
7	255043510022	Mast 4300	外门架焊合4300	1	H=4300	
7	255043510023	Mast 4500	外门架焊合4500	1	H=4500	
7	255043510024	Mast 5000	外门架焊合5000	1	H=5000	
7	255043510025	Mast 5500	外门架焊合5500	1	H=5500	
7	255043510026	Mast 6000	外门架焊合6000	1	H=6000	
8	255044020006	Bearing bush	轴瓦	2		
9	255044020005	Bearing cover	支座盖	2		
10	910400500010	Washer GB93-16	弹簧垫圈GB93-16	4		
11	910100200016	Bolt GB5785-M16x1.5x70-8.8	螺栓GB5785-M16x1.5x70-8.8	4		
12	910400100010	Washer GB97.1-16-200HV	平垫圈GB97.1-16-200HV	4		
13	911200100004	Grease nipple JB7940.1-M10x1	油杯JB7940.1-M10x1	2		
14	940200300013	Roller φ111-range=53-58	复合滚轮 φ111-range=53-58	2		
15	255044020131	Guide plate	垫板	2		
16	255044020132	Adjusting pad φ35xφ16x0.8	调整垫 φ35x φ16x0.8	2		选装/Optional
	255044020133	Adjusting pad φ35xφ16x0.5	调整垫 φ35x φ16x0.5	2		选装/Optional
	255044020134	Adjusting pad φ35xφ16x0.2	调整垫 φ35x φ16x0.2	2		选装/Optional



门架(三级全自由)/Mast (three stage full free)						
序号/NO	编码/SN	Name	名称	数量/QTY	备注/Remarks	
1	255044020131	Guide plate	垫板	4		
	255044020132	Adjusting pad φ35xφ16x0.8	调整垫 φ35x φ16x0.8	4		
	255044020133	Adjusting pad φ35xφ16x0.5	调整垫 φ35x φ16x0.5	4		
	255044020134	Adjusting pad φ35xφ16x0.2	调整垫 φ35x φ16x0.2	4		
3	255044510120	Mast 3600	外门架焊合3600	1	H=3600	
3	255044510030	Mast 4000	外门架焊合4000	1	H=4000	
3	255044510031	Mast 4300	外门架焊合4300	1	H=4300	
3	255044510032	Mast 4500	外门架焊合4500	1	H=4500	
3	255044510033	Mast 4800	外门架焊合4800	1	H=4800	
3	255044510034	Mast 5000	外门架焊合5000	1	H=5000	
3	255044510035	Mast 5500	外门架焊合5500	1	H=5500	
3	255044510036	Mast 6000	外门架焊合6000	1	H=6000	
4	910401300020	Circlip GB894.1-40	轴用弹性挡圈GB894.1-40	4		
5	910100300039	Bolt GB5783-M10x40-8.8	螺栓GB5783-M10x40-8.8	8		
6	910400500007	Washer GB93-10	弹簧垫圈GB93-10	8		
7	910400500008	Washer GB93-12	弹簧垫圈GB93-12	6		
8	910400100007	Washer GB97.1-10-200HV	平垫圈GB97.1-10-200HV	8		
9	940200200005	Roller φ42-CD=68	侧滚轮 φ42-CD=68	8		
10	255038020008	Adjusting pad	侧滚轮调整套	8		
11	255038020009	Adjusting pad	侧滚轮调整垫	8		
12	255044010057	Axle φ30x82	带耳轴 φ30x82	4		
13	910100300035	Bolt GB5783-M10x20-8.8	螺栓GB5783-M10x20-8.8	4		
14	911200100004	Grease nipple JB7940.1-M10x1	油杯JB7940.1-M10x1	2		
15	255044020006	Bearing bush	轴瓦	2		
16	255044020005	Bearing cover	支座盖	2		
17	910400500010	Washer GB93-16	弹簧垫圈GB93-16	4		
18	910100200016	Bolt GB5785-M16x1.5x70-8.8	螺栓GB5785-M16x1.5x70-8.8	4		
19	910400100010	Washer GB97.1-16-200HV	平垫圈GB97.1-16-200HV	4		
20	910401300026	Circlip GB894.1-55	轴用弹性挡圈GB894.1-55	2		
21	940200100021	Main roller φ119.6 x φ55 x34	主滚轮 φ119.6 x φ55x34	4		
22	255044510116	Mast 3600	中门架焊合3600	1	H=3600	
22	255044510023	Mast 4000	中门架焊合4000	1	H=4000	
22	255044510024	Mast 4300	中门架焊合4300	1	H=4300	
22	255044510025	Mast 4500	中门架焊合4500	1	H=4500	
22	255044510026	Mast 4800	中门架焊合4800	1	H=4800	
22	255044510027	Mast 5000	中门架焊合5000	1	H=5000	
22	255044510028	Mast 5500	中门架焊合5500	1	H=5500	
22	255044510029	Mast 6000	中门架焊合6000	1	H=6000	
22	255044510119	Mast 6500	中门架焊合6500	1	H=6500	
23	255044510112	Mast 3600	内门架焊合3600	1	H=4000	
23	255044510037	Mast 4000	内门架焊合4000	1	H=3600	
23	255044510038	Mast 4300	内门架焊合4300	1	H=4300	
23	255044510039	Mast 4500	内门架焊合4500	1	H=4500	
23	255044510040	Mast 4800	内门架焊合4800	1	H=4800	
23	255044510041	Mast 5000	内门架焊合5000	1	H=5000	
23	255044510042	Mast 5500	内门架焊合5500	1	H=5500	
23	255044510043	Mast 6000	内门架焊合6000	1	H=6000	
23	255044510115	Mast 6500	内门架焊合6500	1	H=6500	

起升油缸(标准门架)/Lifting cylinder(standard mast)						
序号/NO	编码/SN	Name	名称	数量/QTY	备注/Remarks	
A	255044010043	Cylinder φ56xφ45x995(H=2000)	油缸(H=2000)	2		
	255044010044	Cylinder φ56xφ45x1245(H=2500)	油缸(H=2500)	2		
	255044010055	Cylinder φ56xφ45x1495(H=3000)	油缸(H=3000)	2		
	255044010045	Cylinder φ56xφ45x1645(H=3300)	油缸(H=3300)	2		
	255044010046	Cylinder φ56xφ45x1745(H=3500)	油缸(H=3500)	2		
	255044010047	Cylinder φ56xφ45x1795(H=3600)	油缸(H=3600)	2		
	255044010048	Cylinder φ56xφ45x1845(H=3700)	油缸(H=3700)	2		
	255044010049	Cylinder φ56xφ45x2045(H=4000)	油缸(H=4000)	2		
	255044010050	Cylinder φ56xφ45x2195(H=4300)	油缸(H=4300)	2		
	255044010051	Cylinder φ56xφ45x2295(H=4500)	油缸(H=4500)	2		

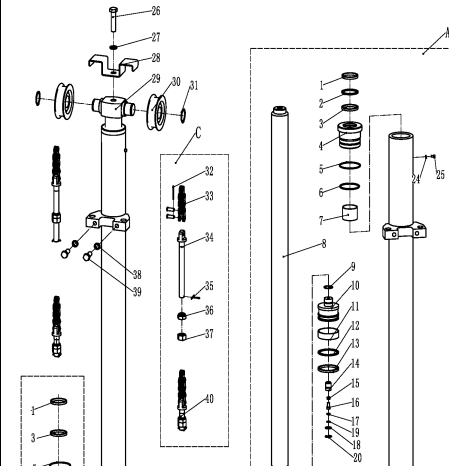
包含/Inc. 24-41

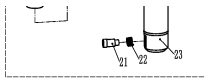
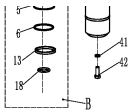


255044010052	Cylinder Ф56xФ45x2595(H=5000)	油缸 (H=5000)	2	
255044010053	Cylinder Ф56xФ45x2845(H=5500)	油缸 (H=5500)	2	
255044010054	Cylinder Ф56xФ45x3095(H=6000)	油缸 (H=6000)	2	
255098510001	Seal kits (standard mast fitting)	密封件修理包 (标准门架起升缸)	2	包含 H=3000 (包含6-11-900)
255044010101	Lifting chain LH1623-77	起升链条LH1623-77	2	H=2000 (包含6-11-900)
255044010059	Lifting chain LH1623-57	起升链条LH1623-57	2	H=2500 (包含6-11-900)
255044010103	Lifting chain LH1623-67	起升链条LH1623-67	2	H=3000 (包含6-11-900)
255044010104	Lifting chain LH1623-83	起升链条LH1623-83	2	H=3500 (包含6-11-900)
255044010105	Lifting chain LH1623-87	起升链条LH1623-87	2	H=3500 (包含6-11-900)
255044010106	Lifting chain LH1623-89	起升链条LH1623-89	2	H=3600 (包含6-11-900)
255044010107	Lifting chain LH1623-91	起升链条LH1623-91	2	H=3700 (包含6-11-900)
255044010108	Lifting chain LH1623-99	起升链条LH1623-99	2	H=4000 (包含6-11-900)
255044010067	Lifting chain LH1623-105	起升链条LH1623-105	2	H=4300 (包含6-11-900)
255044010068	Lifting chain LH1623-109	起升链条LH1623-109	2	H=4300 (包含6-11-900)
255044010100	Lifting chain LH1623-121	起升链条LH1623-121	2	H=5000 (包含6-11-900)
255044010069	Lifting chain LH1623-131	起升链条LH1623-131	2	H=5500 (包含6-11-900)
255044010070	Lifting chain LH1623-141	起升链条LH1623-141	2	H=6000 (包含6-11-900)
940200500001	Chain roller bearing 780708K-φ110xφ40x27	链轮轴承780708K-φ110xφ40x27	2	
910401300020	Circlip GB894.1-40	轴用弹性挡圈GB894.1-40	2	
910400500010	Washer GB93-16	弹簧垫圈GB93-16	2	
910100400029	Bolt GB5786-M16x1.5x40-8.8	螺栓GB5786-M16x1.5x40-8.8	2	
▲	Split pin 2.5x40	开口销2.5x40	2	
▲	LH1623 chain	LH1623板式链	2	
▲	Joint	长端接头	2	
▲	Split pin 3.2x30	开口销3.2x30	2	
▲	Nut M18x1.5	球面螺母M18x1.5	2	
▲	Nut M18x1.5	螺母M18x1.5	2	
255044020128	Fixing ring	固定环	2	
255044020129	Rubber bushing	橡胶套	2	
255044020130	Fixing seat	固定座	2	
910400100007	Washer GB97.1-16-200HV	平垫圈GB97.1-16-200HV	4	
910400500007	Washer GB93-10	弹簧垫圈GB93-10	4	
910300200002	Nut GB6171-M10x1.25-10	螺母GB6171-M10x1.25-10	4	
910100300041	Bolt GB5783-M10x50-8.8	螺栓GB5783-M10x50-8.8	2	
910300100007	Nut GB6170-M10-10	螺母GB6170-M10-10	2	
▲	Joint	短端接头	2	
910400100008	Washer GB97.1-12-200HV	平垫圈GB97.1-12-200HV	2	
910400500008	Washer GB93-12	弹簧垫圈GB93-12	2	
910100400009	Bolt GB5786-M12x1.25x25-8.8	螺栓GB5786-M12x1.25x25-8.8	2	
▲	Piston rod	活塞杆	1	
▲	Adjusting bushing 40.5x49xL2	调整套40.5x49xL2	1	
▲	Circlip	钢丝挡圈	1	
▲	Bearing 50x20x2.5	支承50x20x2.5	1	
▲	Catch 50x40x3	挡片50x40x3	1	
▲	Seal ring 50x40x6	孔用密封圈	1	
▲	Piston rod	活塞	1	
▲	Copper bushing	铜套	1	
▲	Circlip	钢丝挡圈	1	
▲	Buffering ring	缓冲环	1	
▲	Dust ring DKB40x52x7/10	防尘圈	1	
▲	Seal ring 40x50x6	轴用密封圈	1	
▲	Guide sleeve	导向套	1	
▲	O ring 49.7x2.4	O型密封圈	1	
▲	Bearing 4030	钢背轴承4030	1	
▲	Cylinder	缸体	1	
▲	Dowel pin	圆柱销	1	

短升降油缸(二级全自由)/Short lifting cylinder (two stage full free)

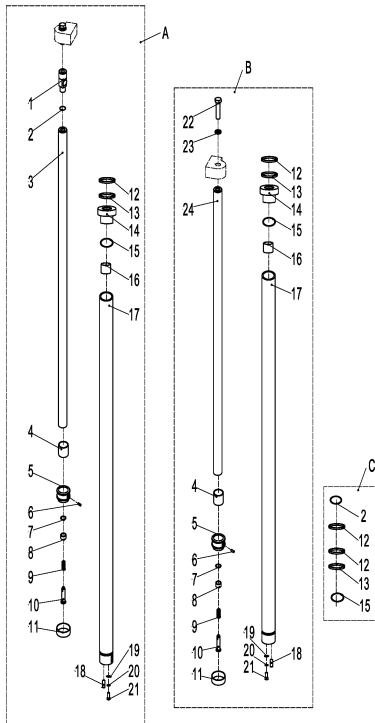
序号/NO	编码/SN	Name	名称	数量/QTY	备注/Remarks
255043510068		Cylinder (M)Ф85xФ60x772(H=3000)	油缸 (M) (H=3000)	1	
255043510066		Cylinder (M)Ф85xФ60x522(H=2000)	油缸 (M) (H=2000)	1	
255043510067		Cylinder (M)Ф85xФ60x647(H=2500)	油缸 (M) (H=2500)	1	
255043510069		Cylinder (M)Ф85xФ60x847(H=3300)	油缸 (M) (H=3300)	1	
255043510070		Cylinder (M)Ф85xФ60x897(H=3500)	油缸 (M) (H=3500)	1	
255043510071		Cylinder (M)Ф85xФ60x922(H=3600)	油缸 (M) (H=3600)	1	
255043510072		Cylinder (M)Ф85xФ60x947(H=3700)	油缸 (M) (H=3700)	1	包含/Inc. 1-25
255043510073		Cylinder (M)Ф85xФ60x1047(H=4000)	油缸 (M) (H=4000)	1	
255043510074		Cylinder (M)Ф85xФ60x1147(H=4300)	油缸 (M) (H=4300)	1	
255043510075		Cylinder (M)Ф85xФ60x1247(H=4500)	油缸 (M) (H=4500)	1	
255043510076		Cylinder (M)Ф85xФ60x1347(H=5000)	油缸 (M) (H=5000)	1	
255043510077		Cylinder (M)Ф85xФ60x1447(H=5500)	油缸 (M) (H=5500)	1	
255043510078		Cylinder (M)Ф85xФ60x1547(H=6000)	油缸 (M) (H=6000)	1	
255098510004		Seal kits (two stage full free middle cylinder)	密封件修理包 (二级全自由中间缸)	1	包含 H=3000 (包含6-11-900)
255043510079		Lifting chain LH1623-37	起升链条LH1623-37	2	H=2000
255043510080		Lifting chain LH1623-47	起升链条LH1623-47	2	H=2500
255044010059		Lifting chain LH1623-55	起升链条LH1623-55	2	H=3000
255044510134		Lifting chain LH1623-61	起升链条LH1623-61	2	H=3300
255044010103		Lifting chain LH1623-65	起升链条LH1623-65	2	H=3500
255044510135		Lifting chain LH1623-59	起升链条LH1623-59	2	H=3600 H=3700
255044510046		Lifting chain LH1623-67	起升链条LH1623-67	2	H=4000
255044510047		Lifting chain LH1623-73	起升链条LH1623-73	2	H=4300
255043510139		Lifting chain LH1623-77	起升链条LH1623-77	2	H=4500
255044010106		Lifting chain LH1623-87	起升链条LH1623-87	2	H=5000
255043510107		Lifting chain LH1623-99	起升链条LH1623-99	2	H=5500
255043510106		Lifting chain LH1623-109	起升链条LH1623-109	2	H=6000
▲		Dust ring 60x74x8/11	防尘圈	1	
▲		Catch 60x70x3	挡片60x70x3	1	
▲		Seal ring 60x70x6	轴用密封圈	1	
▲		Guide sleeve	导向套	1	
▲		O ring 84.4x3.1	O型密封圈	1	
▲		O ring 77.5x3.55	O型密封圈	1	
▲		Bearing 6035	钢背轴承6035	1	
▲		Piston rod	活塞杆	1	
▲		Circlip	钢丝挡圈	1	





10	▲	Piston assembly	活塞总成	1	
11	▲	Back up ring D85x20x2.5	支承环D85x20x2.5	1	
12	▲	Circlip 85x70x3	挡圈85x70x3	1	
13	▲	Seal ring 85x70x9	密封圈	1	
14	▲	Valve bushing	阀套	1	
15	▲	Spring	弹簧	1	
16	▲	Valve plug	阀芯	1	
17	▲	Catch	挡片	1	
18	▲	O ring D15.8x2.4	O型密封圈	1	
19	▲	Circlip φ12	挡圈φ12	1	
20	▲	Circlip φ22	挡圈φ22	1	
21	▲	Slide valve	滑阀	1	
22	▲	Spring	弹簧	1	
23	▲	Cylinder	缸体	1	
24	▲	Spacer	垫片	1	
25	▲	Screw M5x5	螺钉M5x5	1	
26		Bolt GB5782-M16x50-8.8	螺栓GB5782-M16x50-8.8	1	
27		Washer GB93-16	弹簧垫圈GB93-16	1	
28		Chain plate	挡链板	1	
29		Cylinder head	缸头	1	
30		Chain wheel bearing 780708K-φ	链轮轴承780708K-φ110xφ40x27	1	
31		Circlip GB894.1-40	袖用弹性挡圈GB894.1-40	1	
32	▲	Split pin2.5x40	开口销2.5x40	2	
33	▲	LH1623 chain	LH1623板式链	2	
34	▲	Joint	长端接头	2	
35	▲	Split pin 3.2x30	开口销3.2x30	2	
36	▲	Nut M18x1.5	球面螺母M18x1.5	2	
37	▲	Nut M18x1.5	螺母M18x1.5	2	
38		Washer GB93-14	弹簧垫圈GB93-14	2	
39		Bolt GB5786-M14x1.5x40-8.8	螺栓GB5786-M14x1.5x40-8.8	2	
40	▲	Joint	短端接头	2	
41		SpringWasherGB93-12	弹簧垫圈GB93-12	1	
42		BoltGB5786-M12x1.25x25-8.8	螺栓GB5786-M12x1.25x25-8.8	1	

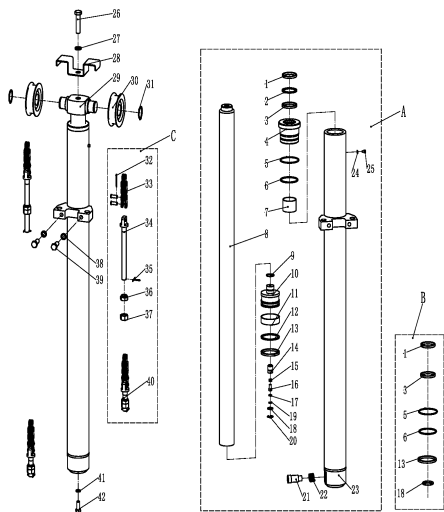
起升油缸(二级全自由)/Lifting cylinder(two stage full free)



序号/NO	编码/SN	Name	名称	数量/QTY	备注/Remarks		
A	255043510040	Cylinder (L)Φ50xΦ40x940(H=2000)	油缸 (L) (H=2000)	1	包含/Inc. 1-21		
	255043510041	Cylinder (L) Φ 50x Φ 2500	油缸 (L) (H=2500)	1			
	255043510042	Cylinder (L) Φ 50x Φ 3000	油缸 (L) (H=3000)	1			
	255043510043	Cylinder (L) Φ 50x Φ 3300	油缸 (L) (H=3300)	1			
	255043510044	Cylinder (L) Φ 50x Φ 3500	油缸 (L) (H=3500)	1			
	255043510045	Cylinder (L) Φ 50x Φ 3600	油缸 (L) (H=3600)	1			
	255043510046	Cylinder (L) Φ 50x Φ 3700	油缸 (L) (H=3700)	1			
	255043510047	Cylinder (L) Φ 50x Φ 4000	油缸 (L) (H=4000)	1			
	255043510048	Cylinder (L) Φ 50x Φ 4300	油缸 (L) (H=4300)	1			
	255043510049	Cylinder (L) Φ 50x Φ 4500	油缸 (L) (H=4500)	1			
	255043510050	Cylinder (L) Φ 50x Φ 5000	油缸 (L) (H=5000)	1			
	255043510051	Cylinder (L) Φ 50x Φ 5500	油缸 (L) (H=5500)	1			
	255043510052	Cylinder (L) Φ 50x Φ 6000	油缸 (L) (H=6000)	1			
	B	255043510053	Cylinder (R)Φ50xΦ40x940(H=2000)	油缸 (R) (H=2000)		1	包括/Inc. 4-21, 24
		255043510054	Cylinder (R) Φ 50x Φ 2500	油缸 (R) (H=2500)		1	
		255043510055	Cylinder (R) Φ 50x Φ 3000	油缸 (R) (H=3000)		1	
		255043510056	Cylinder (R) Φ 50x Φ 3300	油缸 (R) (H=3300)		1	
255043510057		Cylinder (R) Φ 50x Φ 3500	油缸 (R) (H=3500)	1			
255043510058		Cylinder (R) Φ 50x Φ 3600	油缸 (R) (H=3600)	1			
255043510059		Cylinder (R) Φ 50x Φ 3700	油缸 (R) (H=3700)	1			
255043510060		Cylinder (R) Φ 50x Φ 4000	油缸 (R) (H=4000)	1			
255043510061		Cylinder (R) Φ 50x Φ 4300	油缸 (R) (H=4300)	1			
255043510062		Cylinder (R) Φ 50x Φ 4500	油缸 (R) (H=4500)	1			
255043510063		Cylinder (R) Φ 50x Φ 5000	油缸 (R) (H=5000)	1			
255043510064		Cylinder (R) Φ 50x Φ 5500	油缸 (R) (H=5500)	1			
255043510065		Cylinder (R) Φ 50x Φ 6000	油缸 (R) (H=6000)	1			
C	255098510002	Seal kits (two stage full free lifting cylinder)	密封件修理包(二级全自由起升缸)	2	包含/Inc. 2, 10, 12, 15		
1	▲	Connecting rod	左连接杆	1			
2	▲	O ring 26x2.4	O型密封圈	1			
3	▲	Piston rod assembly	左柱塞杆总成	1			
4	▲	Adjusting bushing	调整套	2			
5	▲	Piston	缓冲活塞	2			
6	▲	ScrewM4x6	内六角凹端紧固螺钉M4x6	2			
7	▲	Circlip φ18	钢丝挡圈φ18	2			
8	▲	Copper bushing	铜套	2			
9	▲	Spring	弹簧	2			
10	▲	Buffer plunger	缓冲柱塞	2			
11	▲	Supporting ring 50x45x15	支承环50x45x15	2			
12	▲	Dust ring DKB40x52x7/10	防尘圈	2			
13	▲	Seal ring 40x50x6	袖用密封圈	2			
14	▲	Guide bushing	导向套	2			
15	▲	O ring 49.7x2.4	O型密封圈	2			
16	▲	Bearing 4030	钢背轴承4030	2			
17	▲	Cylinder	缸体	2			
18	▲	Dowel pin10x26	圆柱销10x26	2			
19		Washer GB97.1-12-200HV	平垫圈GB97.1-12-200HV	2			
20		Washer GB93-12	弹簧垫圈GB93-12	2			
21		Bolt GB5786-M12x1.25x25-8.8	螺栓GB5786-M12x1.25x25-8.8	2			
22		Bolt GB5786-M16x1.5x40-8.8	螺栓GB5786-M16x1.5x40-8.8	2			
23		Washer GB93-16	弹簧垫圈GB93-16	2			
24	▲	Plunger rod assembly	右柱塞杆总成	1			

短升降油缸(三级全自由)/Short lifting cylinder (three stage full free)

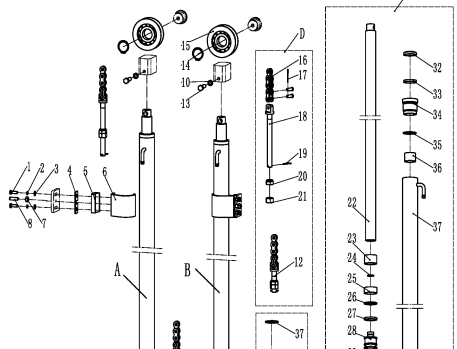
序号/NO	编码/SN	Name	名称	数量/QTY	备注/Remarks
A	255044510100	Cylinder (M)Φ75xΦ50x622(H=3600)	油缸 (M) (H=3600)	1	包含/Inc. 1-25
A	255044510050	Cylinder (M)Φ75xΦ50x685(H=4000)	油缸 (M) (H=4000)	1	
A	255044510051	Cylinder (M)Φ75xΦ50x748(H=4300)	油缸 (M) (H=4300)	1	
A	255044510052	Cylinder (M)Φ75xΦ50x772(H=4500)	油缸 (M) (H=4500)	1	
A	255044510053	Cylinder (M)Φ75xΦ50x822(H=4800)	油缸 (M) (H=4800)	1	

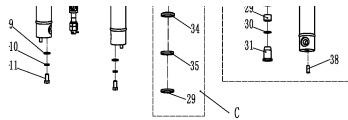


A	255044510054	Cylinder (M)Φ75xΦ50x879(H=5000)	油缸 (M) (H=5000)	1	
A	255044510055	Cylinder (M)Φ75xΦ50x895(H=5500)	油缸 (M) (H=5500)	1	
A	255044510056	Cylinder (M)Φ75xΦ50x911(H=6000)	油缸 (M) (H=6000)	1	
A	255044510103	Cylinder (M)Φ75xΦ50x927(H=6500)	油缸 (M) (H=6500)	1	
B	255098510005	Seal kits (three stage full free lifting cylinder)	密封件修理包 (三级全自由中间缸)	1	包含 Inc. 1, 2, 3, 4, 5, 6, 7, 8, 9
C	255044510124	Lifting chain LH1623-45	起升链条LH1623-45	2	H=3600
C	255044510044	Lifting chain LH1623-47	起升链条LH1623-47	2	H=4000
C	255044510045	Lifting chain LH1623-53	起升链条LH1623-53	2	H=4300
C	255044010060	Lifting chain LH1623-55	起升链条LH1623-55	2	H=4500
C	255044510133	Lifting chain LH1623-59	起升链条LH1623-59	2	H=4800
C	255044510134	Lifting chain LH1623-63	起升链条LH1623-63	2	H=5000
C	255044510135	Lifting chain LH1623-61	起升链条LH1623-61	2	H=5500
C	255044510136	Lifting chain LH1623-71	起升链条LH1623-71	2	H=6000
C	255044510137	Lifting chain LH1623-81	起升链条LH1623-81	2	H=6500
1	▲	Dust ring 50x58x6.5	防尘圈	1	
2	▲	Catch 50x60x3	挡片50×60×3	1	
3	▲	Seal ring 50x60x6	轴用密封圈	1	
4	▲	Glide sleeve	导向套	1	
5	▲	O ring 74.4x3.1	O型密封圈	1	
6	▲	O ring 69x3.55	O型密封圈	1	
7	▲	Bearing5040	钢背轴承5040	1	
8	▲	Piston rod	活塞杆	1	
9	▲	Circlip	钢丝挡圈	1	
10	▲	Piston assembly	活塞总成	1	
11	▲	Support ring 75x20x2.5	支承环75x20x2.5	1	
12	▲	Support ring 75x65x3	支承环75x65x3	1	
13	▲	Seal ring 75x65x6	孔用密封圈	1	
14	▲	Valve cover	阀套	1	
15	▲	Spring	弹簧	1	
16	▲	Valve plug	阀芯	1	
17	▲	Catch	挡片	1	
18	▲	O ring D20x2.4	O型密封圈	1	
19	▲	Circlip 12	孔用弹性挡圈12	1	
20	▲	Circlip 22	孔用弹性挡圈22	1	
21	▲	Slide valve	滑阀	1	
22	▲	Spring2.3x15x48.5	弹簧2.3x15x48.5	1	
23	▲	Cylinder	缸体	1	
24	▲	Spacer	垫片	1	
25	▲	Screw M5x5	内六角圆柱头螺钉M5x5	1	
26	910100100071	Bolt GB5782-M16x50-8.8	螺栓GB5782-M16x50-8.8	1	
27	910400500010	Washer GB93-16	弹簧垫圈GB93-16	1	
28	255043520020	Block chain plate	挡链板	1	
29	255043520006	Cylinder head	缸头	1	
30	940200500001	Chain wheel bearing 780708K-φ	链轮轴承780708K-φ110xφ40x27	2	
31	910401300020	Circlip GB894.1-40	轴用弹性挡圈GB894.1-40	2	
32	▲	split pin2.5x40	开口销2.5x40	2	
33	▲	LH1623 chain	LH1623板式链	2	
34	▲	Joint	长端接头	2	
35	▲	Split pin 3.2x30	开口销3.2x30	2	
36	▲	Nut M18x1.5	球面螺母M18x1.5	2	
37	▲	Nut M18x1.5	螺母M18x1.5	2	
38	910400500009	Washer GB93-14	弹簧垫圈GB93-14	2	
39	910100400022	Bolt GB5786-M14x1.5x40-8.8	螺栓GB5786-M14x1.5x40-8.8	2	
41	▲	Joint	短端接头	2	
42	910400500008	SpringWasherGB93-12	弹簧垫圈GB93-12	1	
43	910100400009	BoltGB5786-M12x1.25x25-8.8	螺栓GB5786-M12x1.25x25-8.8	1	

起升油缸 (三级全自由) / Lifting cylinder (three stage full free)

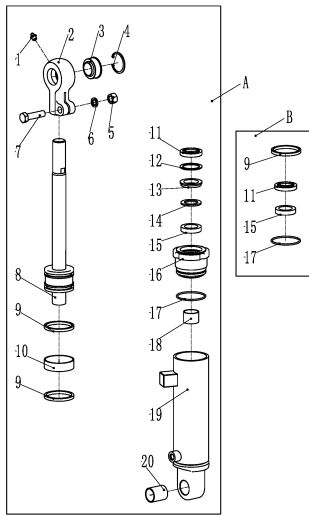
序号/NO	编码/SN	Name	名称	数量/QTY	备注/Remarks
A	255044510104	Cylinder (L)Φ50xΦ40x1174	油缸 (L) (H=3600)	1	
A	255044510004	Cylinder (L)Φ50xΦ40x1312	油缸 (L) (H=4000)	1	
A	255044510005	Cylinder (L)Φ50xΦ40x1424	油缸 (L) (H=4300)	1	
A	255044510006	Cylinder (L)Φ50xΦ40x1474	油缸 (L) (H=4500)	1	
A	255044510007	Cylinder (L)Φ50xΦ40x1574	油缸 (L) (H=4800)	1	
A	255044510008	Cylinder (L)Φ50xΦ40x1617	油缸 (L) (H=5000)	1	
A	255044510009	Cylinder (L)Φ50xΦ40x1751	油缸 (L) (H=5500)	1	
A	255044510010	Cylinder (L)Φ50xΦ40x1884	油缸 (L) (H=6000)	1	
A	255044510107	Cylinder (L)Φ50xΦ40x2017	油缸 (L) (H=6500)	1	
B	255044510108	Cylinder (R)Φ50xΦ40x1174	油缸 (R) (H=3600)	1	
B	255044510011	Cylinder (R)Φ50xΦ40x1312	油缸 (R) (H=4000)	1	
B	255044510012	Cylinder (R)Φ50xΦ40x1424	油缸 (R) (H=4300)	1	
B	255044510013	Cylinder (R)Φ50xΦ40x1474	油缸 (R) (H=4500)	1	
B	255044510014	Cylinder (R)Φ50xΦ40x1574	油缸 (R) (H=4800)	1	
B	255044510015	Cylinder (R)Φ50xΦ40x1617	油缸 (R) (H=5000)	1	
B	255044510016	Cylinder (R)Φ50xΦ40x1751	油缸 (R) (H=5500)	1	
B	255044510017	Cylinder (R)Φ50xΦ40x1884	油缸 (R) (H=6000)	1	
B	255044510111	Cylinder (R)Φ50xΦ40x2017	油缸 (R) (H=6500)	1	
C	255098510003	Seal kits (three stage full free lifting cylinder)	密封件修理包 (三级全自由起升缸)	2	包含 Inc. 29, 34, 35, 37
D	255044510134	Lifting chainLH1623-63	起升链条LH1623-63	2	H=3600
D	255044510046	Lifting chainLH1623-69	起升链条LH1623-69	2	H=4000
D	255044510138	Lifting chainLH1623-73	起升链条LH1623-73	2	H=4300
D	255044510047	Lifting chainLH1623-75	起升链条LH1623-75	2	H=4500
D	255043510139	Lifting chainLH1623-79	起升链条LH1623-79	2	H=4800
D	255044510140	Lifting chainLH1623-85	起升链条LH1623-85	2	H=5000
D	255044510048	Lifting chainLH1623-95	起升链条LH1623-95	2	H=5500
D	255044510049	Lifting chainLH1623-103	起升链条LH1623-103	2	H=6000
D	255044510125	Lifting chainLH1623-113	起升链条LH1623-113	2	H=6500
1	910100300023	Bolt GB5783-M8x25-8.8	螺栓GB5783-M8x25-8.8	4	
2	910400500006	Washer GB93-8	弹簧垫圈GB93-8	4	
3	910400100006	Washer GB97.1-8-200HV	平垫圈GB97.1-8-200HV	4	
4	255044520099	Rubber pad	橡胶垫	2	
5	255044520100	Support block	支撑块	2	
6	255044520098	Blendboard	弯板	2	
8	910300100007	Screw M10x35-8.8	螺钉M10x35-8.8	2	
9	941100100003	Nut GB6170-M10-10	螺母GB6170-M10-10	2	





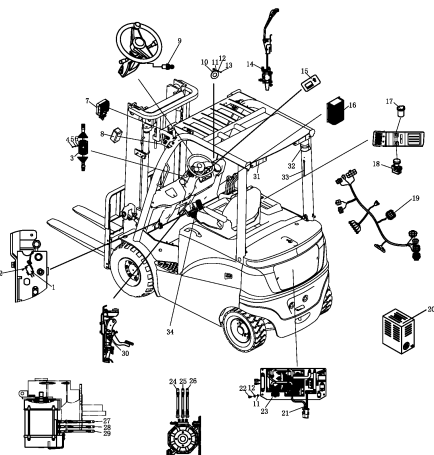
10	910400100008	Washer GB97.1-12-200HV	平垫圈GB97.1-12-200HV	2	
11	910400500008	Washer GB93-12	弹簧垫圈GB93-12	4	
12	910100400009	Bolt GB5786-M12x1.25x25-8.8	螺栓GB5786-M12x1.25x25-8.8	2	
13	▲	Joint	短端接头	2	
15	910100300053	Bolt GB5783-M12x45-8.8	螺栓GB5783-M12x45-8.8	2	
16	910401300020	Circlip GB894.1-40	轴用弹性挡圈GB894.1-40	2	
17	940200500005	Chain wheel bearing 780708K-φ	链轮轴承780708K-φ110xφ40x27	2	
18	▲	LH1623 chain	LH1623板式链	2	
19	▲	Split pin 2.5x40	开口销2.5x40	2	
20	▲	Joint	长端接头	2	
21	▲	Split pin 3.2x30	开口销3.2x30	2	
22	▲	Nut M18x1.5	球面螺母M18x1.5	2	
23	▲	Nut M18x1.5	螺母M18x1.5	2	
24	▲	Piston rod	活塞杆	1	
25	▲	Adjusting bushing 40.5x49xL2	调整套40.5x49xL2	1	
26	▲	Circlip φ24x2	钢丝挡圈φ24x2	1	
27	▲	Bearing 50x20x2.5	支承50x20x2.5	1	
28	▲	Catch 50x40x3	挡片50x40x3	1	
29	▲	Seal ring 50x40x6	孔用密封圈	1	
30	▲	Piston	活塞	1	
31	▲	Copper bushing	铜套	1	
32	▲	Circlip φ26.5x2	钢丝挡圈φ26.5x2	1	
33	▲	Buffer ring	缓冲环	1	
34	▲	Dust ring DKB40x52x7/10	防尘圈	1	
35	▲	Seal ring 40x50x6	轴用密封圈	1	
36	▲	Guide bushing	导向套	1	
37	▲	O seal ring 49.7x2.4	O型密封圈	1	
38	▲	Bearing 4030	钢背轴承4030	1	
39	▲	Cylinder	缸体	1	
40	▲	Dowel pin D10x26	圆柱销D10x26	1	

倾斜油缸/Tilted cylinder



序号/NO	编码/SN	Name	名称	数量/QTY	备注/Remarks
A	255020510001	Tilted cylinder (6/10)	左倾斜油缸 (6/10)	1	H≤3700, Left
	255020510002	Tilted cylinder (6/6)	左倾斜油缸 (6/6)	1	00<H≤5000, Left
	255020510003	Tilted cylinder (3/6)	左倾斜油缸 (3/6)	1	5000<H, Left
A	255020510005	Tilted cylinder (6/10)	右倾斜油缸 (6/10)	1	H≤3700, Right
	255020510006	Tilted cylinder (6/6)	右倾斜油缸 (6/6)	1	00<H≤5000, Right
	255020510007	Tilted cylinder (3/6)	右倾斜油缸 (3/6)	1	5000<H, Right
B	255098510006	Seal kits (tilted cylinder)	密封件修理包(倾斜缸)	2	含Inc. 9. 11. 15.
1	▲	Grease mouth Z1/8	直通式滑脂嘴Z1/8	2	
2	255098520501	Earring	耳环	2	
3	▲	Bearing GE30ES	关节轴承GE30ES	2	
4	▲	Circlip 47	挡圈47	2	
5	▲	NutM14	螺母M14	2	
6	▲	Washer14	垫圈14	2	
7	▲	BoltM14x55	螺栓M14x55	2	
8	▲	Piston body assembly	活塞体总成	2	
9	▲	Yx seal ring D70x60x6	Yx型密封圈	2	
10	▲	Support ring D70x20x2.5	支承环D70x20x2.5	2	
11	▲	Dust ring 52x32x8/9	防尘圈	2	
12	▲	Circlip 52	挡圈52	2	
13	▲	Circlip	挡圈	2	
14	▲	Catch 48x32x3	挡片48x32x3	2	
15	▲	Useal ring 48x32x10	U型密封圈	2	
16	▲	Guide sleeve	导向套	2	
17	▲	O seal ring 70x3.1	O型密封圈	2	
18	▲	Bearing 3225	钢背轴承3225	2	
19	▲	Cylinder barrel assembly	缸筒总成	2	
20	▲	Bearing 3040	钢背轴承3040	2	

电器系统/Electric system



序号/NO	编码/SN	Name	名称	数量/QTY	备注/Remarks
1	920200300009	Micro switch	微动开关	1	注:平焊列
2	910400100003	Washer GB97.1-4-200HV	平垫圈GB97.1-4-200HV	2	
3	920200800013	Combination switch	组合开关	1	
4	910200500038	Screw GB818-M5x12-4.8	螺钉GB818-M5x12-4.8	4	
5	910400500004	Washer GB93-5	弹簧垫圈GB93-5	8	
6	910400100004	Washer GB97.1-5-200HV	平垫圈GB97.1-5-200HV	8	
7	922000100001	Light PDL-LXZM-1	灯PDL-LXZM-1	2	前大灯
8	922000100002	Light PDL-LXXD-1	灯PDL-LXXD-1	2	前转向灯 front
9	920200200002	Key switch	钥匙开关	1	
10	920500100001	Horn 125-DC24V	喇叭125-DC24V	1	
11	910400100005	Washer GB97.1-6-200HV	平垫圈GB97.1-6-200HV	1	
12	910400500005	Washer GB93-6	弹簧垫圈GB93-6	1	
13	910200500051	Screw GB818-M6x12-4.8	螺钉GB818-M6x12-4.8	1	
14	920200300004	Micro switch RZ-15GQ22-B3	微动开关	3	多路阀/MULTI
15	921100100011	Indicator 3501-12-80V	仪表3501	1	Curtis
	921100100039	Indicator IDD-E-35CD17B	仪表IDD-E-35CD17B	1	Inmotion
16	921900100001	Transducer DC48V 24V	转换器DC48V转24V	1	
	921900100004	Transducer DC24V 5V	转换器DC24V转5V	4	
18	920200100020	EMERGENCY STOP SWITCH LA139-01M-LRC	急停开关LAY39-01MJ-RC	1	
19	255033010001	Body wiring harness (Curtis-4P25N)	车身线束 (Curtis-4P25N)	1	
	255033010011	Body wiring harness (Inmotion-4P25N)	车身线束 (Inmotion-4P25N)	1	Inmotion
	921000200079	Charger SN48V80A(Asia Chinese)	充电器SN48V80A(亚中)	1	600/630Ah
	921000200080	Charger SN48V80A(Asia English)	充电器SN48V80A(亚英)	1	600/630Ah
	921000200081	Charger SN48V80A(Europe)	充电器SN48V80A(欧)	1	600/630Ah
	921000200082	Charger SN48V80A(England)	充电器SN48V80A(英)	1	600/630Ah
	921000200083	Charger SN48V80A(Australian)	充电器SN48V80A(澳)	1	600/630Ah
	921000200084	Charger SN48V80A(America)	充电器SN48V80A(美)	1	600/630Ah
20	921000200097	Charger SN48V100A(Asia Chinese)	充电器SN48V100A(亚中)	1	700/770Ah
	921000200098	Charger SN48V100A(Asia English)	充电器SN48V100A(亚英)	1	700/770Ah
	921000200099	Charger SN48V100A(Europe)	充电器SN48V100A(欧)	1	700/770Ah
	921000200100	Charger SN48V100A(England)	充电器SN48V100A(英)	1	700/770Ah
	921000200101	Charger SN48V100A(Australian)	充电器SN48V100A(澳)	1	700/770Ah

	921000200102	Charger SN48V100A(America)	充电器SN48V100A(美)	2	700\770Ah
21	255033010008	Cable	电源线缆	1	
22	910200200058	Screw GB70.1-M8x25-8.8	螺钉GB70.1-M8x25-8.8	1	
23	255033010015	Electronic control module (Curtis-4P25N)	电控组件 (Curtis-4P25N)	1	Curtis
23	255033010012	Electronic control module (Inmotion-4P25N)	电控组件 (Inmotion-4P25N)	1	Inmotion
24	255033010005	Cable-U2-35-6-8-1350	线缆-U2-35-6-8-1350	1	
25	255033010006	Cable-V2-35-6-8-1300	线缆-V2-35-6-8-1300	1	
26	255033010007	Cable-W2-35-6-8-1250	线缆-W2-35-6-8-1250	1	
27	255033010002	Cable-U1-35-6-8-3100	线缆-U1-35-6-8-3100	1	
28	255033010003	Cable-V1-35-6-8-3050	线缆-V1-35-6-8-3050	1	
29	255033010004	Cable-W1-35-6-8-3000	线缆-W1-35-6-8-3000	1	
30	920201000002	Foot pedal	脚踏开关JK231	1	
31	922000100003	Light PDL-LXHW-2	灯PDL-LXHW-2	2	
32	922000100004	Light PDL-LXJD-01Y	灯PDL-LXJD-01Y	1	
33	255033510001	Rear lever switch	后把手开关	1	
34	921700100005	Accelerator	加速器EZ3-532-133	1	Curtis
	921700100015	Accelerator	加速器JCTH2-5L	1	Inmotion

电控组件 (CURTIS) / Electronic control element (CURTIS)					
序号/NO	编码/SN	Name	名称	数量/QTY	备注/Remarks
1	920100400008	Fuse box BX2081X	保险盒BX2081X	1	
2	255098033001	Controller 12325E-5321(4P25N-P-HP)	控制器12325E-5321(4P25N-P-HP)	1	铅酸+HP
2	255098033002	Controller 12325E-5321(4P25N-P-WN)	控制器12325E-5321(4P25N-P-WN)	1	铅酸+WN
2	255098033007	Controller 12342E-5321(4P25NLI-P-HP)	控制器12342E-5321(4P25NLI-P-HP)	1	锂电+HP
2	255098033008	Controller 12325E-5321(4P25NLI-P-WN)	控制器12325E-5321(4P25NLI-P-WN)	1	锂电+WN
3	255098033003	Controller 12345E-5421(4P25N-T-HP)	控制器12345E-5421(4P25N-T-HP)	1	铅酸+HP
3	255098033004	Controller 12345E-5421(4P26N-T-WN)	控制器12345E-5421(4P26N-T-WN)	1	铅酸+WN
3	255098033005	Controller 12345E-5421(4P25NLI-T-HP)	控制器12345E-5421(4P25NLI-T-HP)	1	锂电+HP
3	255098033006	Controller 12345E-5421(4P25NLI-T-WN)	控制器12345E-5421(4P25NLI-T-WN)	1	锂电+WN
4	920500100002	Buzzer DJB-24B	喇叭蜂鸣器DJB-24B	1	
5	922000100005	Light SG252-24V	灯SG252-24V	1	
6	920800100002	Relay DC24V-HFV4	继电器DC24V-HFV4	1	
7	920100100014	Fuse 500A	保险丝500A	1	
8	920700100005	Contact DC48C-SW200-262	接触器DC48C-SW200-262	1	

电控组件 (Inmotion) / Electronic control element (Inmotion)					
序号/NO	编码/SN	Name	名称	数量/QTY	备注/Remarks
1	920100400008	Fuse box BX2081X	保险盒BX2081X	1	
2	255098033009	Controller ACS48S-450C-35P(4P25N-T-HP)	控制器ACS48S-450C-35P(4P25N-T-HP)	1	HP
2	255098033010	Controller ACS48S-450C-35P(4P25N-T-WN)	控制器ACS48S-450C-35P(4P25N-T-WN)	1	WN
3	255098033011	Controller ACS48S-350C-23P(4P25N-P-HP)	控制器ACS48S-350C-23P(4P25N-P-HP)	1	HP
3	255098033012	Controller ACS48S-350C-23P(4P25N-P-WN)	控制器ACS48S-350C-23P(4P25N-P-WN)	1	WN
4	920500100002	Buzzer DJB-24B	喇叭蜂鸣器DJB-24B	1	
5	922000100005	Light SG252-24V	灯SG252-24V	1	
6	920800100002	Relay DC24V-HFV4	继电器DC24V-HFV4	1	
7	920100100014	Fuse 500A	保险丝500A	1	
8	920700100005	Contact DC48C-SW200-262	接触器DC48C-SW200-262	1	

电源连接器总成 / Power connector assembly					
序号/NO	编码/SN	Name	名称	数量/QTY	备注/Remarks
1	920400100014	Battery connecting cable REMA9560	接插件REMA95601-05	1	铅酸
1	920400100023	Battery connecting cable REMA9561	接插件REMA95615-39	1	锂电
2	920400100011	Battery connecting cable REMA9560-01	接插件REMA95600-01	1	
3	910400100005	Washer GB97.1-6-200HV	平垫圈GB97.1-6-200HV	4	
4	910400500005	Washer GB93-6	弹簧垫圈GB93-6	4	
5	910200200046	Screw GB70.1-M6x60-8.8	螺钉GB70.1-M6x60-8.8	4	

